

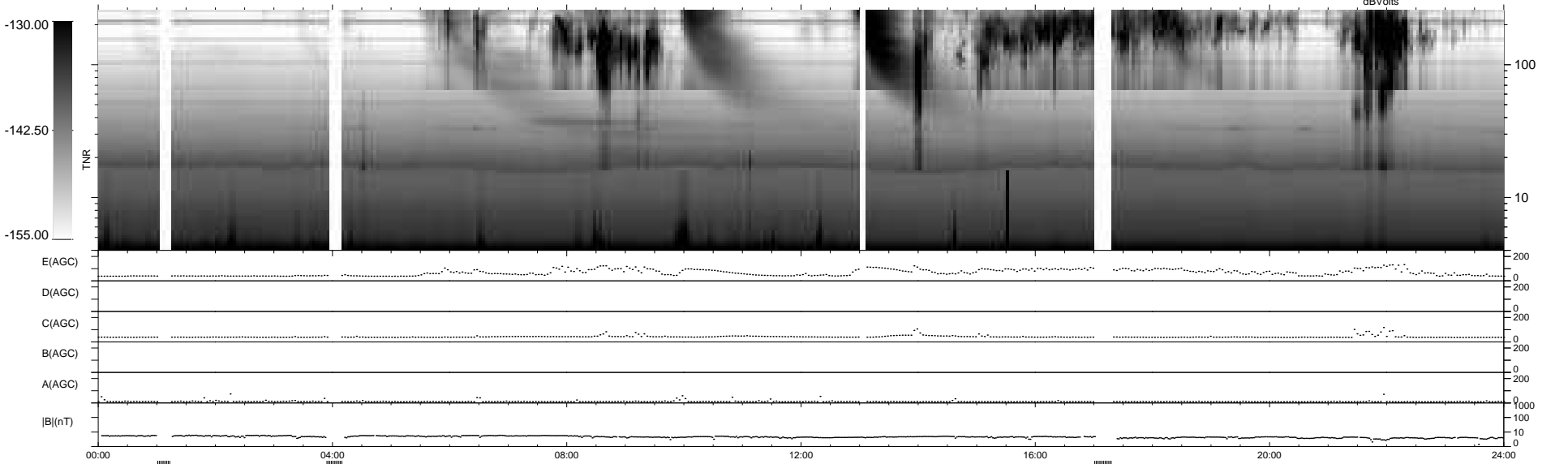
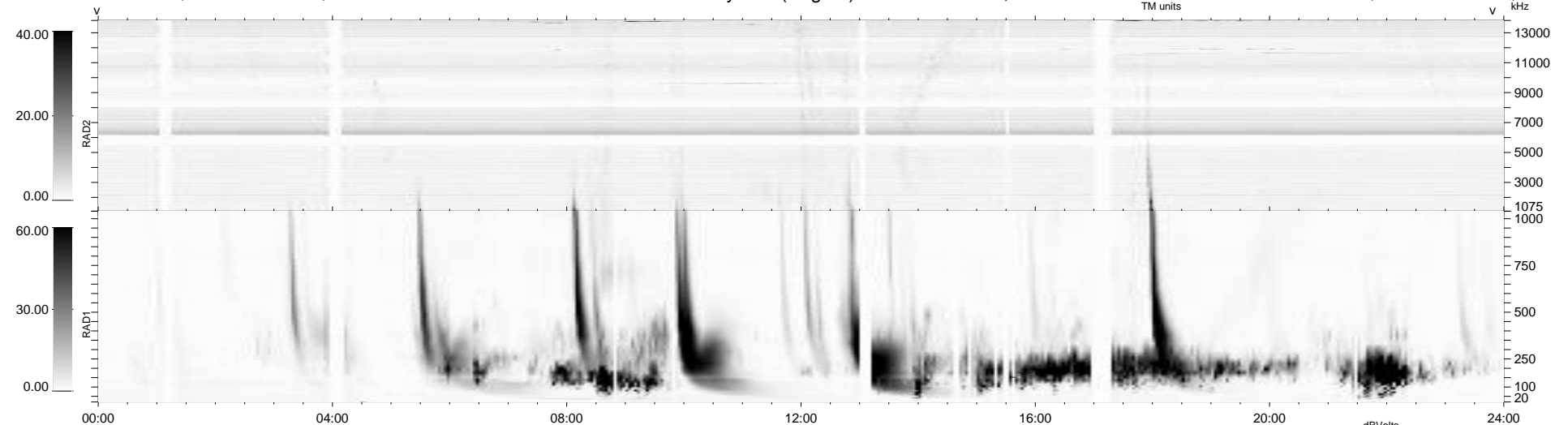
27 bad + 880 good MF/939MF projected (93%) - 32 missing MFs
Avg interval = 180 secs
Re = 208.03 (197.92, 62.84, -12.41 GSE)

windlib 2.0b

LZ version = v02

WIND/WAVES Summary Plot (Page 1) for 14-JAN-2016, DOY = 14

DAILY 2016-01-19 10:52:04
Re = 209.18 (198.20, 65.78, -12.21 GSE)



RAD2
Antenna Ey
Mode LIN(1)
SUM/SEP SEP
Toggle OFF

RAD1
Antenna Ex
Mode LIS(2/4)
SUM/SEP SUM
Toggle OFF

TNR
Antenna ExEy
Mode A-32
Sweep ACE