

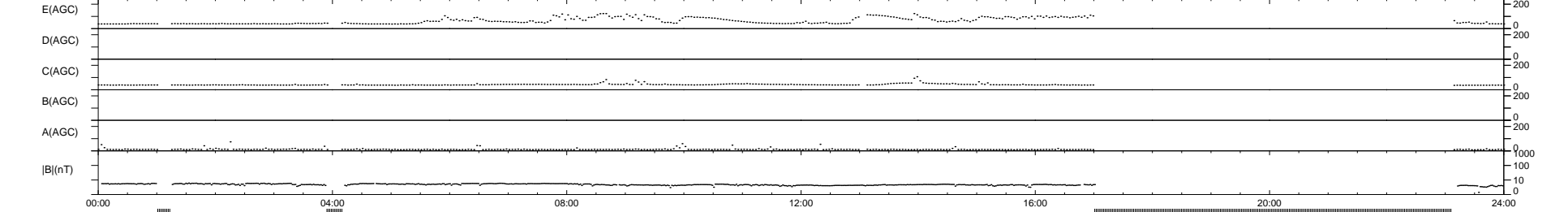
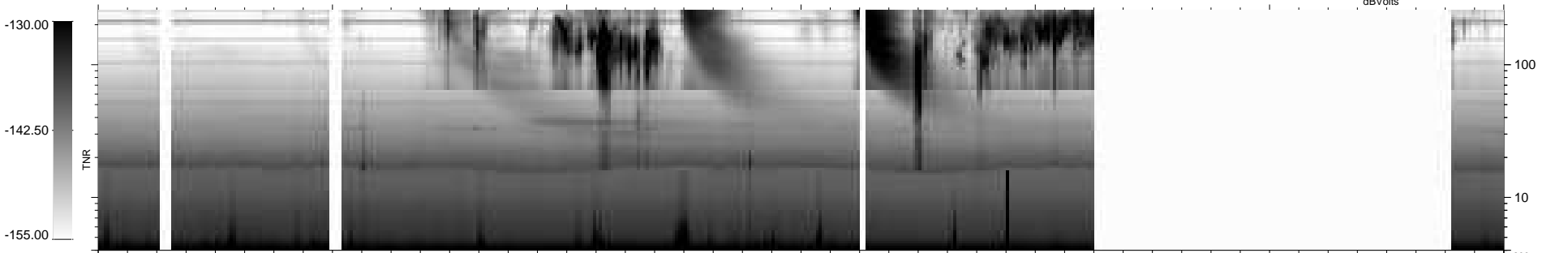
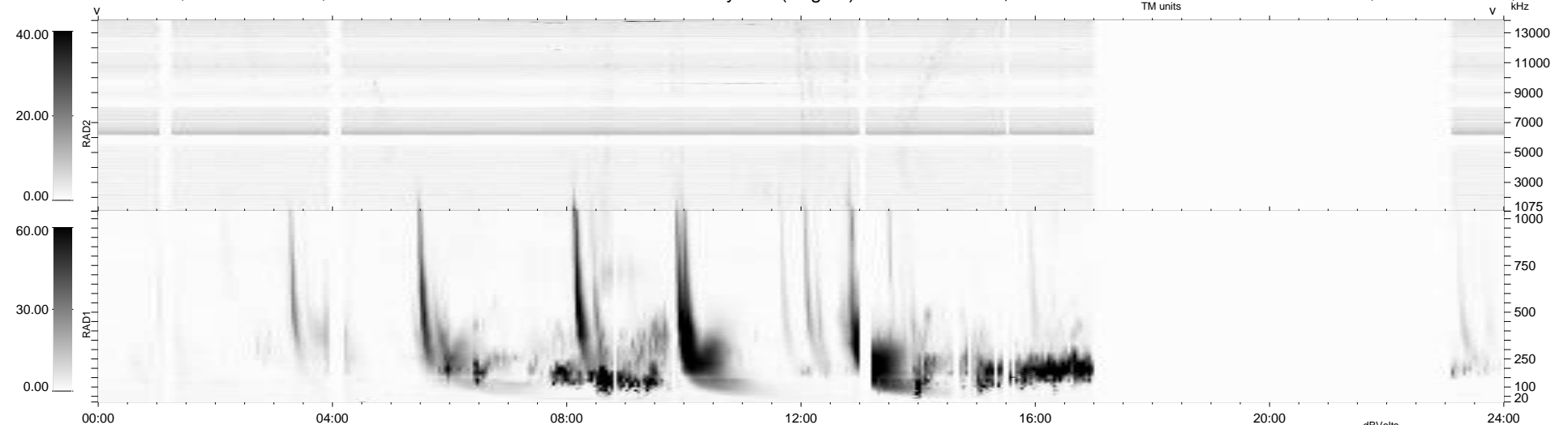
25 bad + 655 good MF/939MF projected (69%) - 259 missing MFs  
 Avg interval = 180 secs  
 Re = 208.03 (197.92, 62.84, -12.41 GSE)

windlib 2.0b

LZ version = v01

### WIND/WAVES Summary Plot (Page 1) for 14-JAN-2016, DOY = 14

DAILY 2016-01-16 02:52:05  
 Re = 209.18 (198.20, 65.78, -12.21 GSE)



RAD2  
 Antenna Ey  
 Mode LIN(1)  
 SUM/SEP SEP  
 Toggle OFF

RAD1  
 Antenna Ex  
 Mode LIS(2,4)  
 SUM/SEP SUM  
 Toggle OFF

TNR  
 Antenna ExEy  
 Mode A-32  
 Sweep ACE