

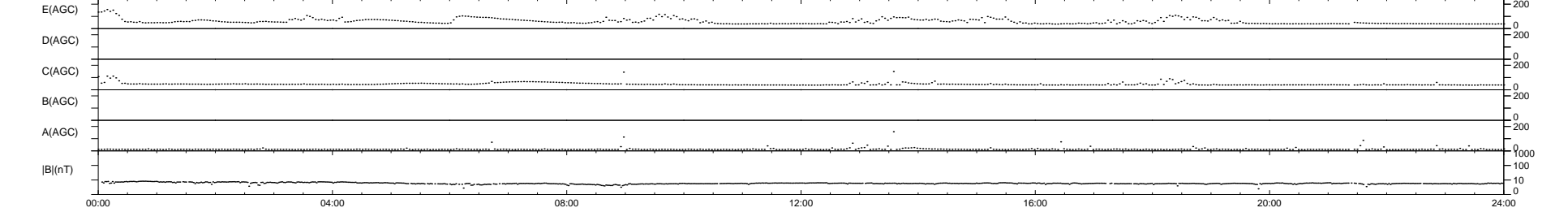
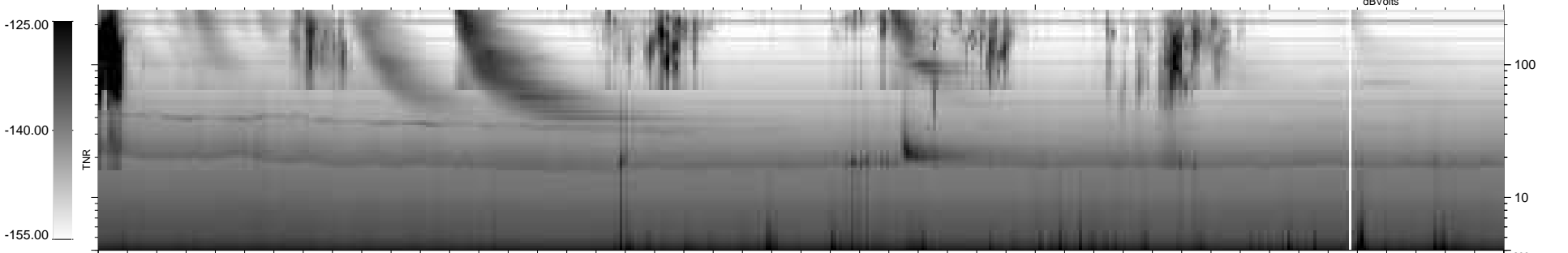
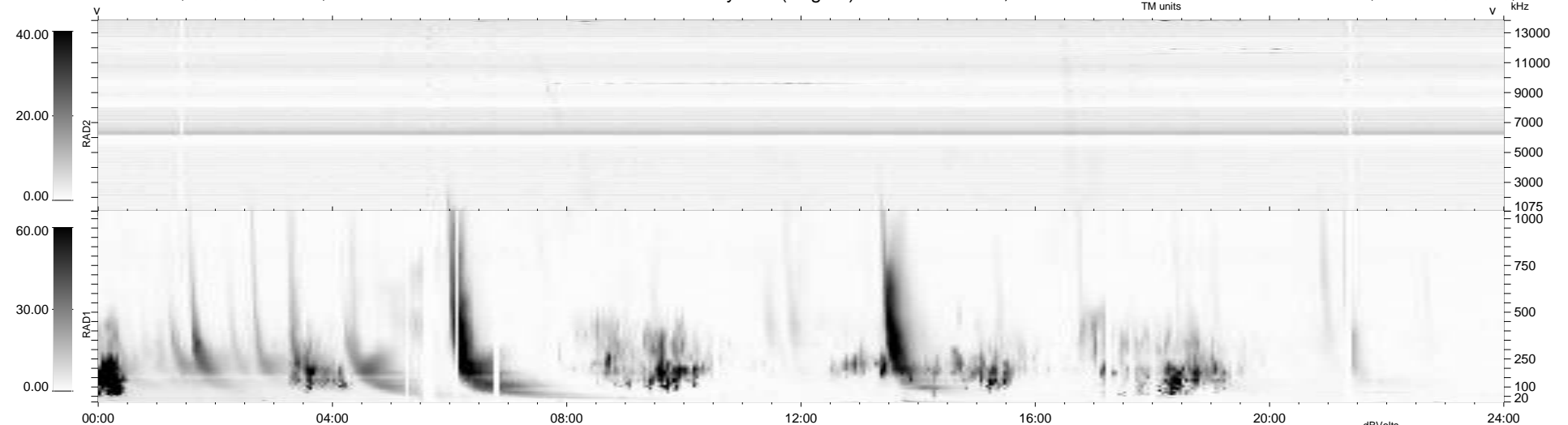
32 bad + 907 good MF/939MF projected (96%) - 0 missing MFs  
Avg interval = 180 secs  
Re = 206.88 (197.66, 59.76, -12.59 GSE)

windlib 2.0b

LZ version = v01

### WIND/WAVES Summary Plot (Page 1) for 13-JAN-2016, DOY = 13

DAILY 2016-01-14 17:52:07  
Re = 208.02 (197.92, 62.82, -12.41 GSE)



RAD2  
Antenna Ey  
Mode LIN(1)  
SUM/SEP SEP  
Toggle OFF

RAD1  
Antenna Ex  
Mode LIS(2,4)  
SUM/SEP SUM  
Toggle OFF

TNR  
Antenna ExEy  
Mode A-32  
Sweep ACE