

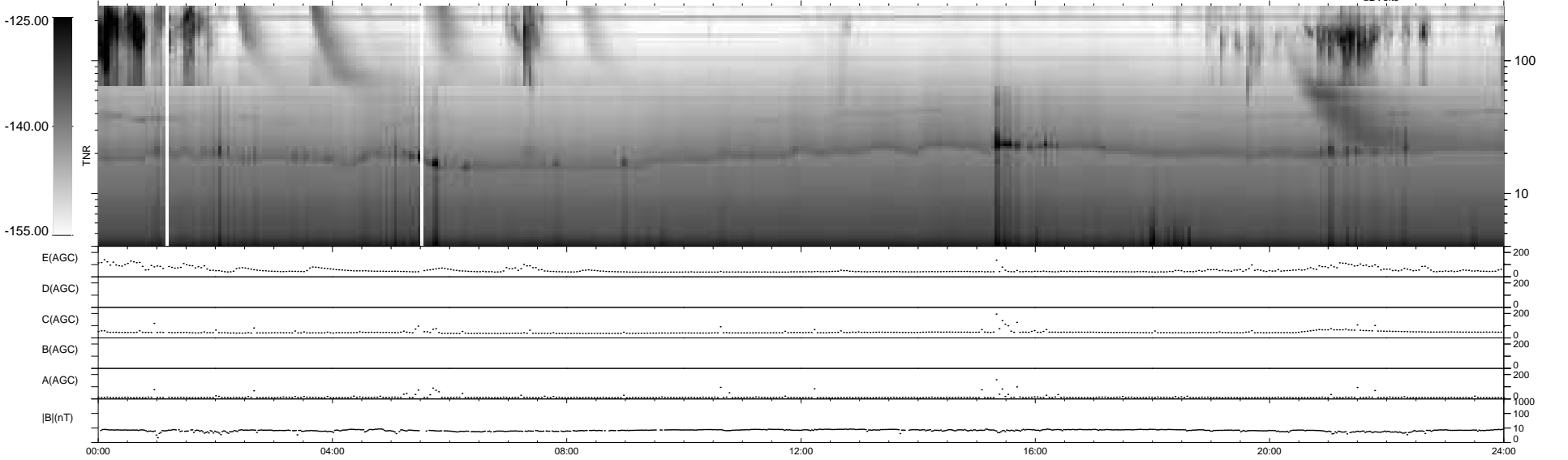
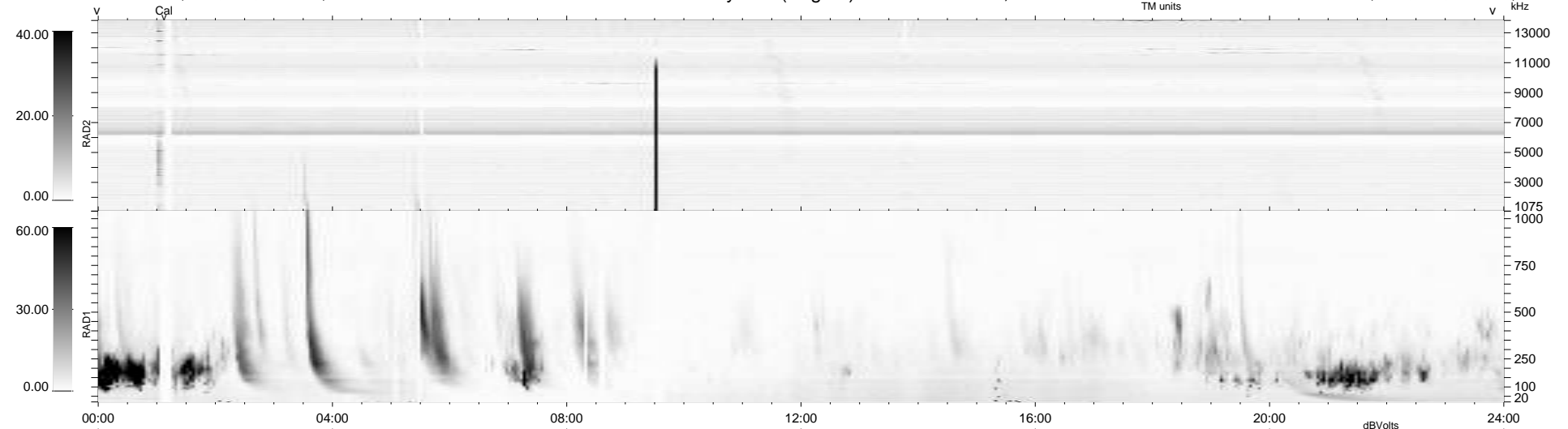
32 bad + 908 good MF/940MF projected (96%) - 0 missing MFs
 Avg interval = 180 secs
 Re = -205.74 (197.40, 56.56, -12.75 GSE)

windlib 2.0b

LZ version = v01

WIND/WAVES Summary Plot (Page 1) for 12-JAN-2016, DOY = 12

DAILY 2016-01-13 09:52:06
 Re = 206.87 (197.66, 59.74, -12.59 GSE)



```

RAD2
Antenna Ey .....
Mode LIN(1) .....
SUM/SEP SEP .....
Toggle OFF .....

RAD1
Antenna Ex .....
Mode LIS(2,4) .....
SUM/SEP SUM .....
Toggle OFF .....

TNR
Antenna ExEy .....
Mode A-32 .....
Sweep ACE .....
  
```