

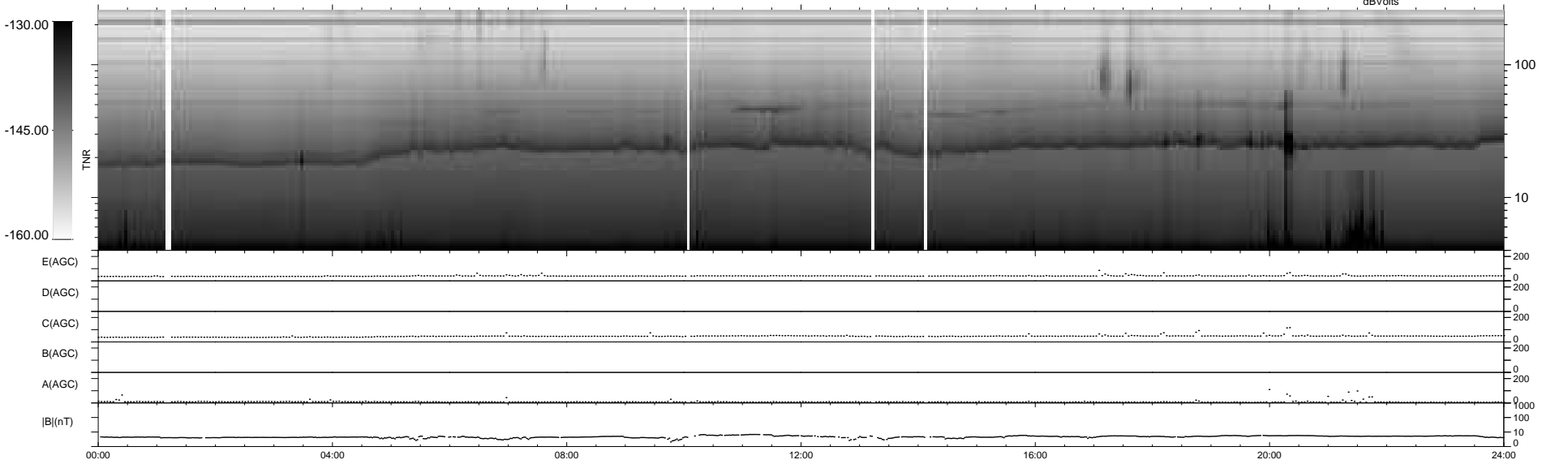
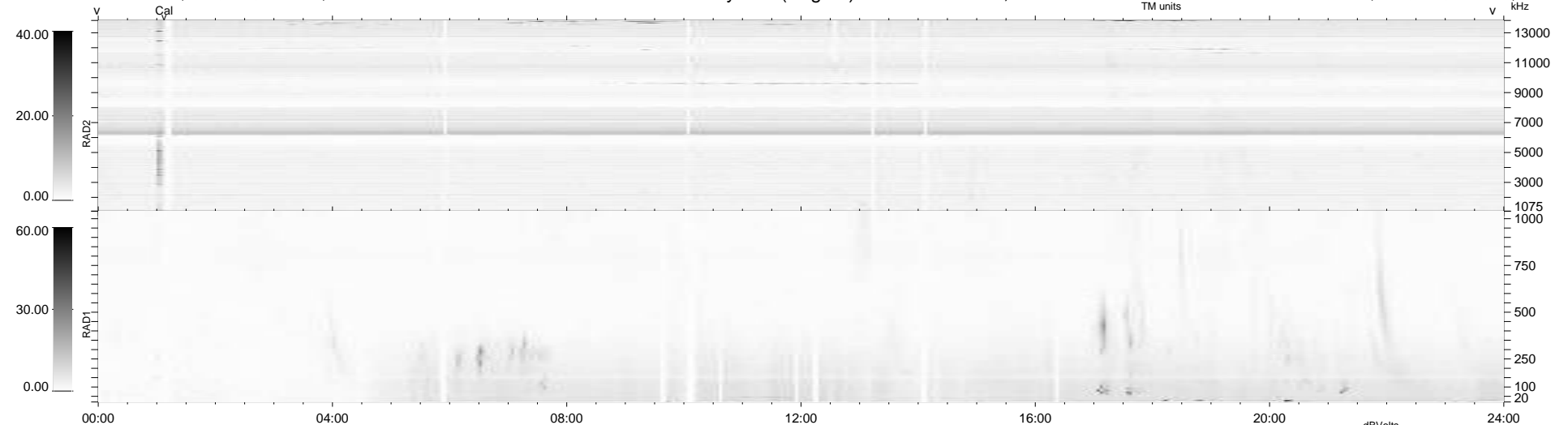
43 bad + 897 good MF/940MF projected (95%) - 0 missing MFs
 Avg interval = 180 secs
 Re = 197.73 (195.24, 28.29, -13.33 GSE)

windlib 2.0b

LZ version = v01

WIND/WAVES Summary Plot (Page 1) for 04-JAN-2016, DOY = 4

DAILY 2016-01-06 01:52:06
 Re = 198.54 (195.50, 31.96, -13.33 GSE)



RAD2
 Antenna Ey
 Mode LIN(1)
 SUM/SEP SEP
 Toggle OFF

RAD1
 Antenna Ex
 Mode LIS(2,4)
 SUM/SEP SUM
 Toggle OFF

TNR
 Antenna ExEy
 Mode A-32
 Sweep ACE