

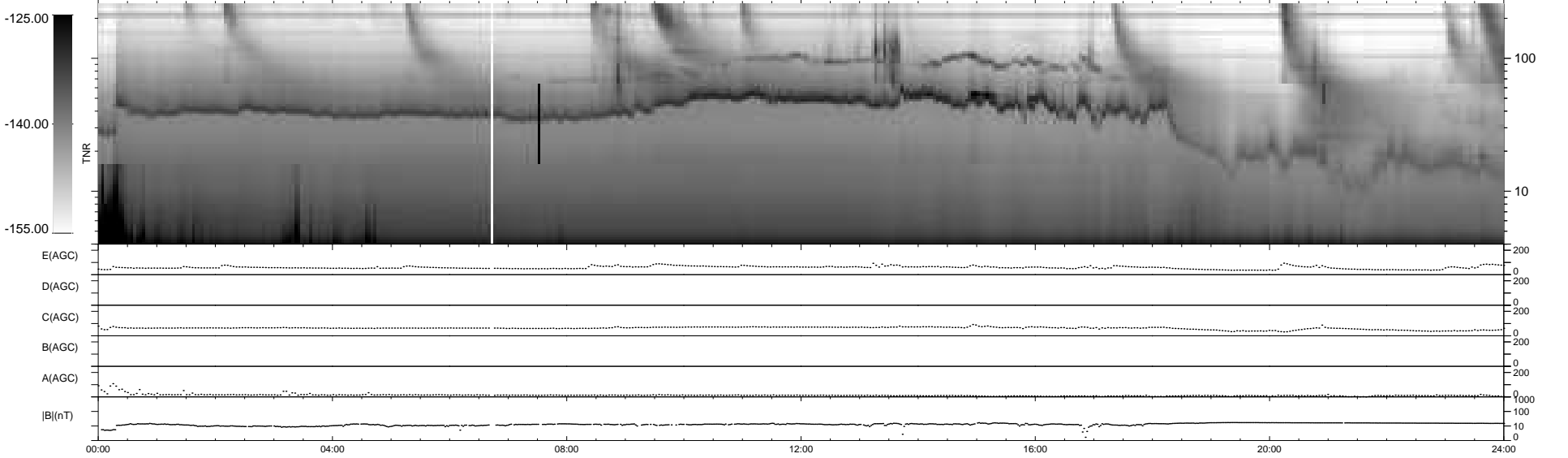
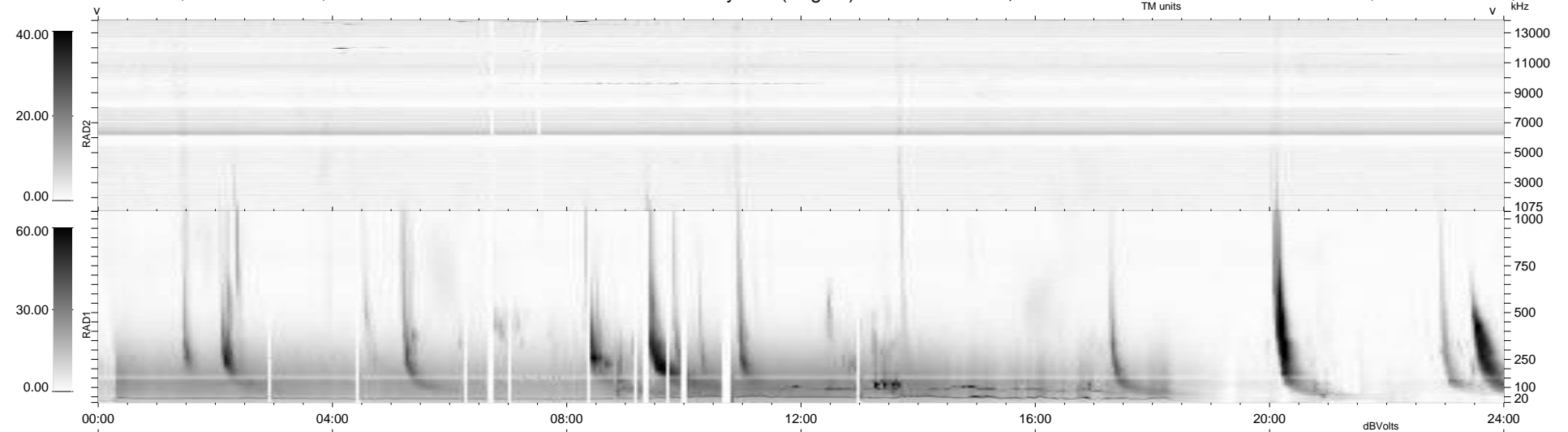
31 bad + 908 good MF/939MF projected (96%) - 0 missing MFs  
 Avg interval = 180 secs  
 Re = - 195.25 (194.35, 13.36, -13.10 GSE)

windlib 2.0b

LZ version = v01

### WIND/WAVES Summary Plot (Page 1) for 31-DEC-2015, DOY = 365

DAILY 2016-01-04 12:54:00  
 Re = 195.73 (194.54, 17.08, -13.19 GSE)



RAD2  
 Antenna Ey .....  
 Mode LIN(1) .....  
 SUM/SEP SEP .....  
 Toggle OFF .....  
 RAD1  
 Antenna Ex .....  
 Mode LIS(2,4) .....  
 SUM/SEP SUM .....  
 Toggle OFF .....  
 TNR  
 Antenna ExEy .....  
 Mode A-32 .....  
 Sweep ACE .....