

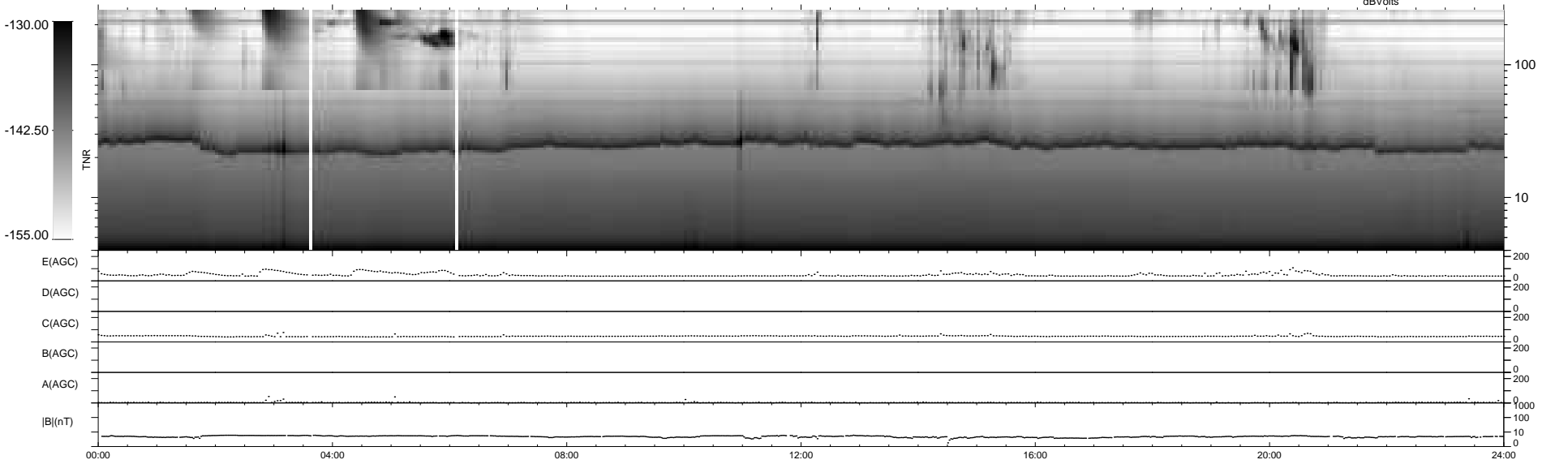
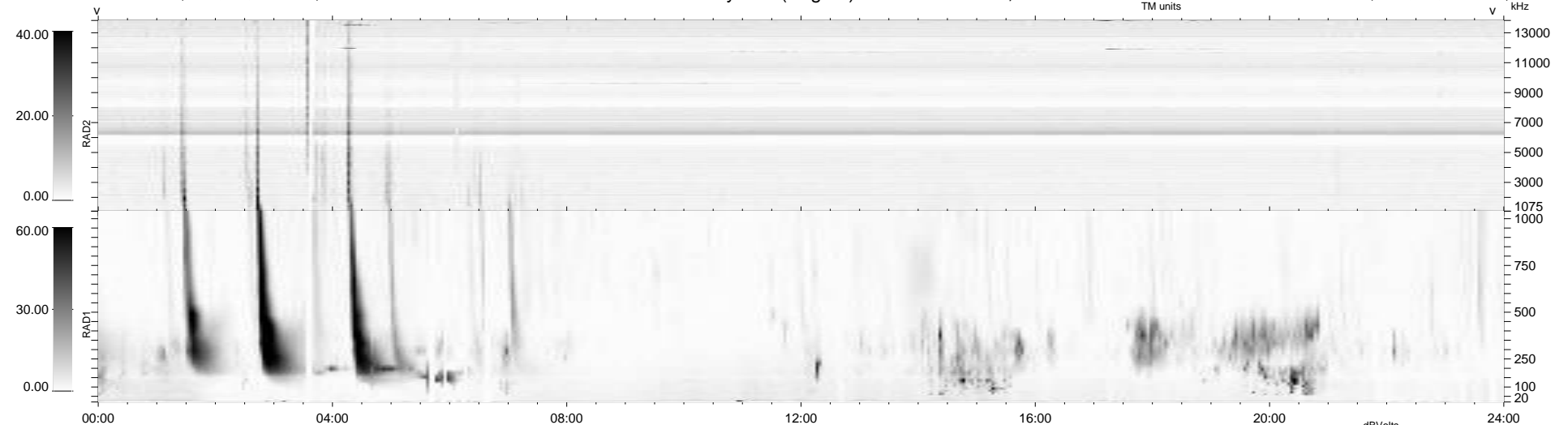
38 bad + 901 good MF/939MF projected (95%) - 0 missing MFs
 Avg interval = 180 secs
 Re = 194.58 (194.07, 5.90, -12.83 GSE)

windlib 2.0b

LZ version = v02

WIND/WAVES Summary Plot (Page 1) for 29-DEC-2015, DOY = 363

DAILY 2016-01-04 13:52:06
 Re = 194.86 (194.19, 9.60, -12.98 GSE)



RAD2 Antenna Ey
 Mode LIN(1)
 SUM/SEP SEP
 Toggle OFF
 RAD1 Antenna Ex
 Mode LIS(2,4)
 SUM/SEP SUM
 Toggle OFF
 TNR Antenna ExEy
 Mode A-32
 Sweep ACE