

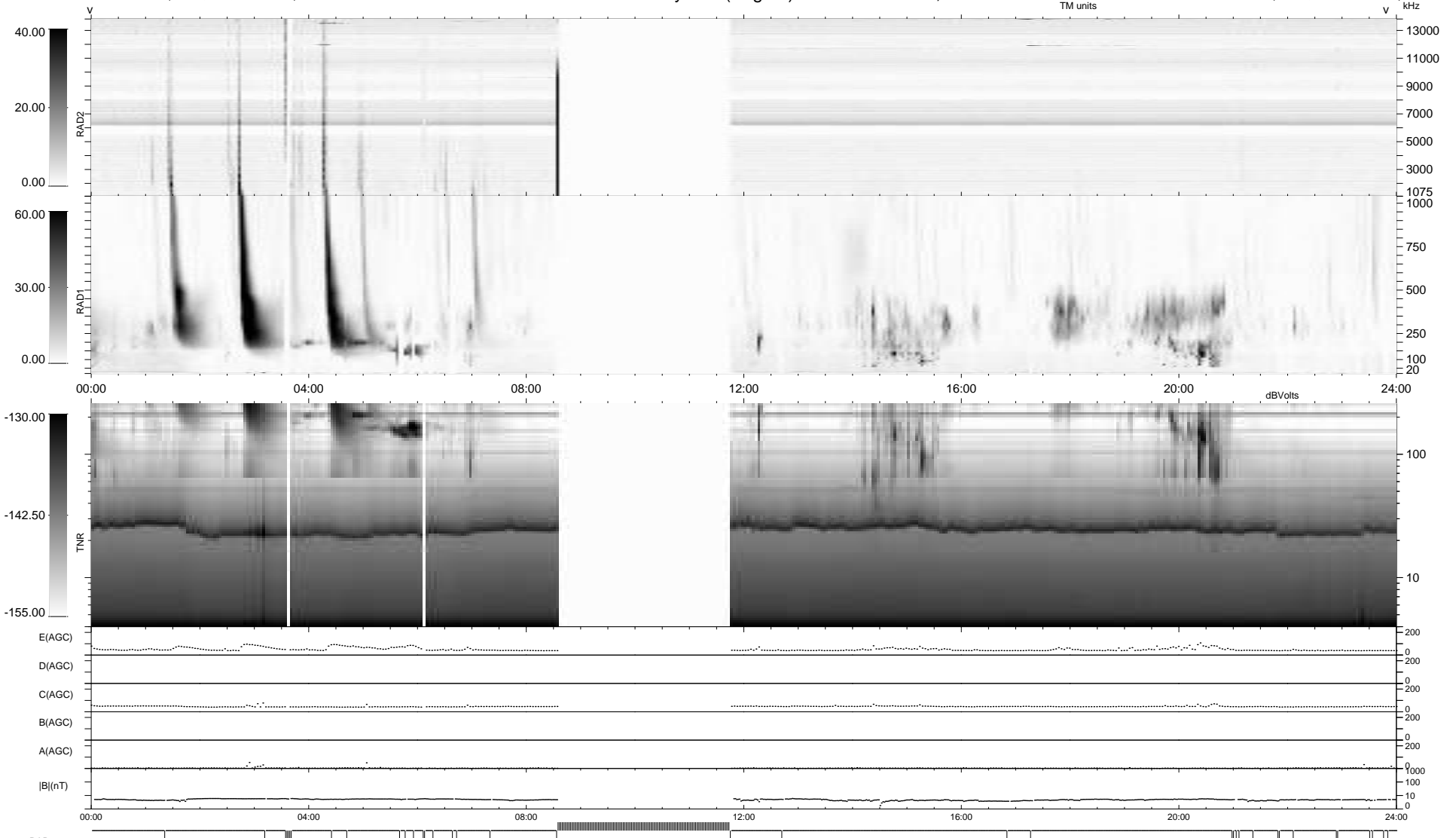
37 bad + 778 good MF/939MF projected (82%) - 124 missing MFs  
 Avg interval = 180 secs  
 Re = 194.58 (194.07, 5.90, -12.83 GSE)

windlib 2.0b

LZ version = v01

### WIND/WAVES Summary Plot (Page 1) for 29-DEC-2015, DOY = 363

DAILY 2015-12-30 18:54:00  
 Re = 194.86 (194.19, 9.60, -12.98 GSE)



RAD2  
 Antenna Ey .....  
 Mode LIN(1) .....  
 SUM/SEP SEP .....  
 Toggle OFF .....  
 RAD1  
 Antenna Ex .....  
 Mode LIS(2/4) .....  
 SUM/SEP SUM .....  
 Toggle OFF .....  
 TNR  
 Antenna ExEy .....  
 Mode A-32 .....  
 Sweep ACE .....