

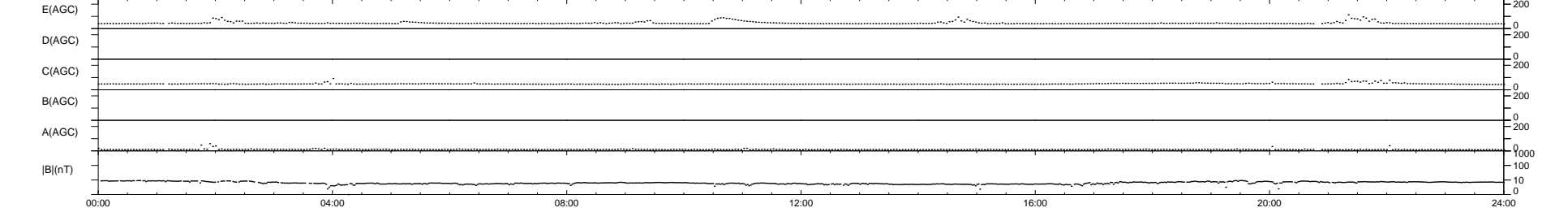
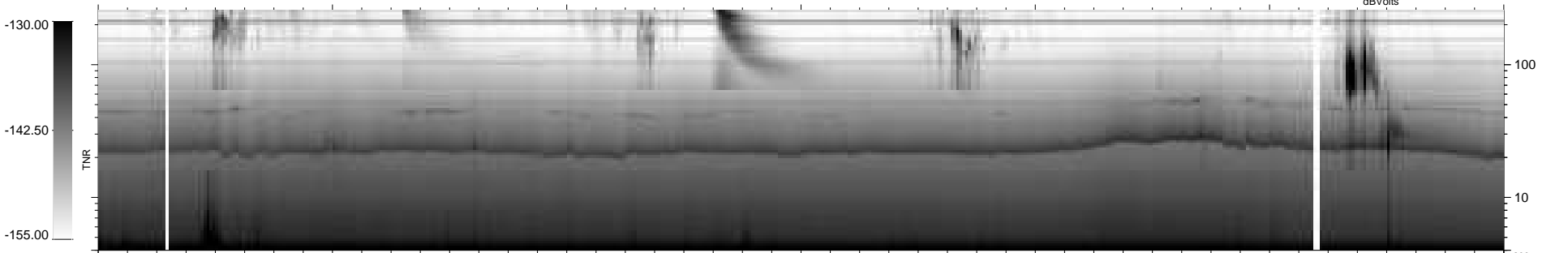
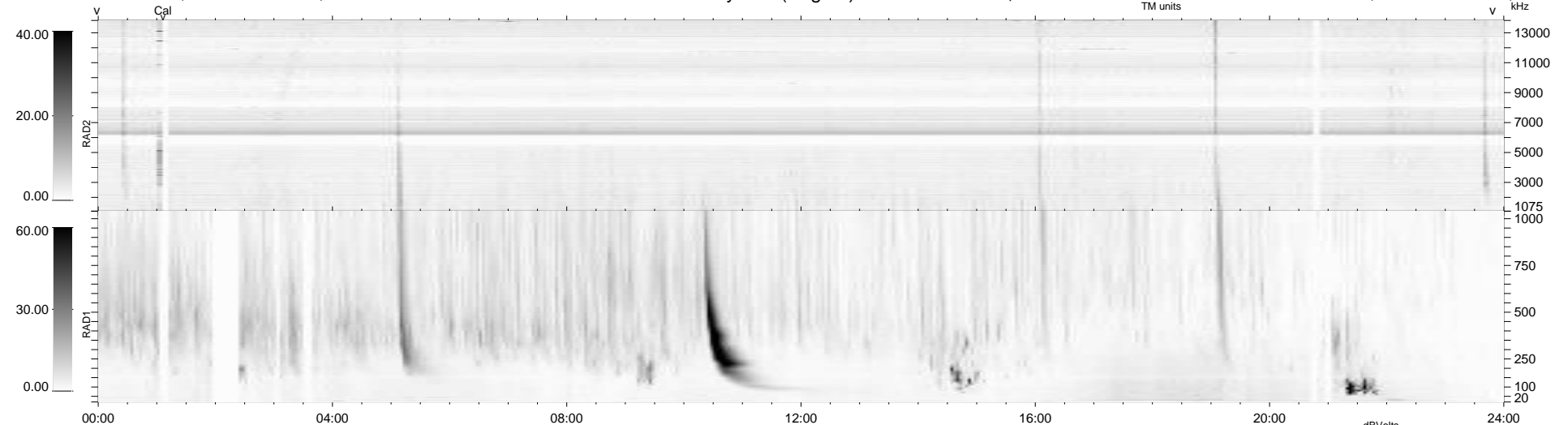
30 bad + 909 good MF/939MF projected (96%) - 0 missing MFs  
 Avg interval = 180 secs  
 Re = 194.40 (193.94, -5.20, -12.24 GSE)

windlib 2.0b

LZ version = v01

### WIND/WAVES Summary Plot (Page 1) for 26-DEC-2015, DOY = 360

DAILY 2015-12-30 17:53:03  
 Re = 194.34 (193.94, -1.54, -12.46 GSE)



```

RAD2
Antenna Ey .....
Mode LIN(1) .....
SUM/SEP SEP .....
Toggle OFF .....

RAD1
Antenna Ex .....
Mode LIS(2,4) .....
SUM/SEP SUM .....
Toggle OFF .....

TNR
Antenna ExEy .....
Mode A-32 .....
Sweep ACE .....
  
```