

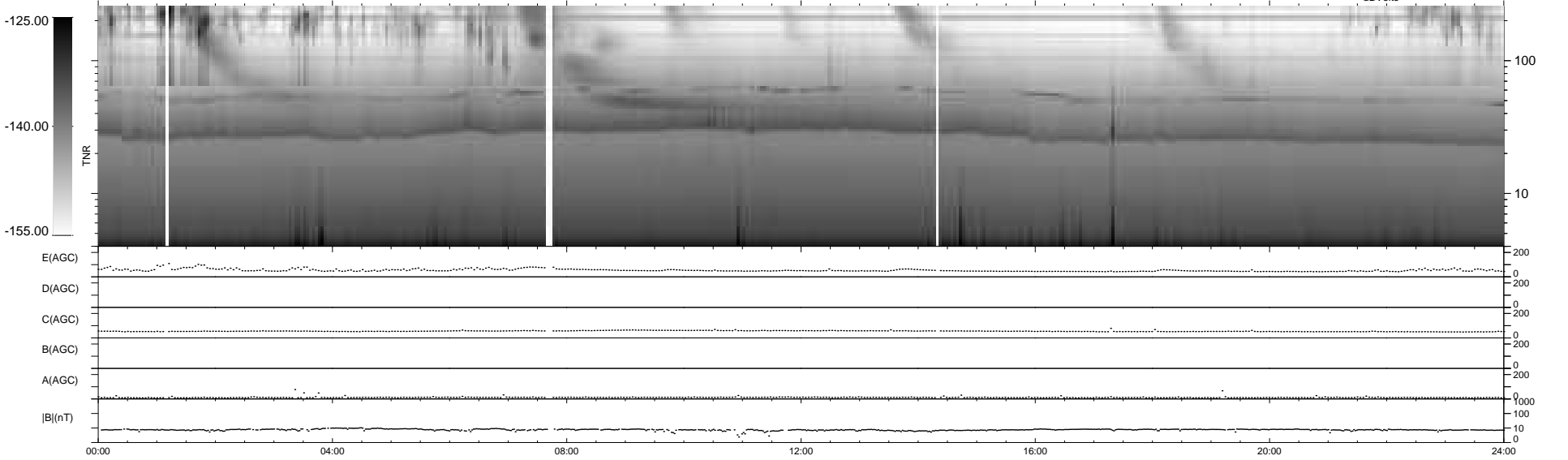
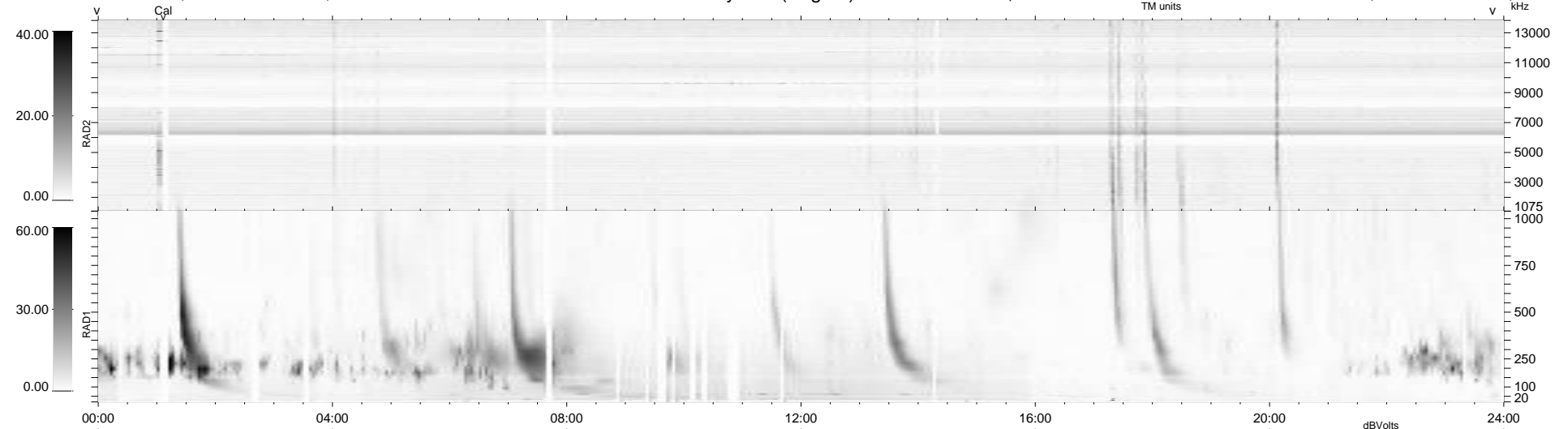
45 bad + 894 good MF/939MF projected (95%) - 0 missing MFs
 Avg interval = 180 secs
 Re = -194.85 (194.09, -12.53, -11.72 GSE)

windlib 2.0b

LZ version = v01

WIND/WAVES Summary Plot (Page 1) for 24-DEC-2015, DOY = 358

DAILY 2015-12-30 16:52:06
 Re = 194.57 (193.99, -8.89, -11.99 GSE)



```

RAD2
Antenna Ey .....
Mode LIN(1) .....
SUM/SEP SEP .....
Toggle OFF .....

RAD1
Antenna Ex .....
Mode LIS(2,4) .....
SUM/SEP SUM .....
Toggle OFF .....

TNR
Antenna ExEy .....
Mode A-32 .....
Sweep ACE .....
  
```