

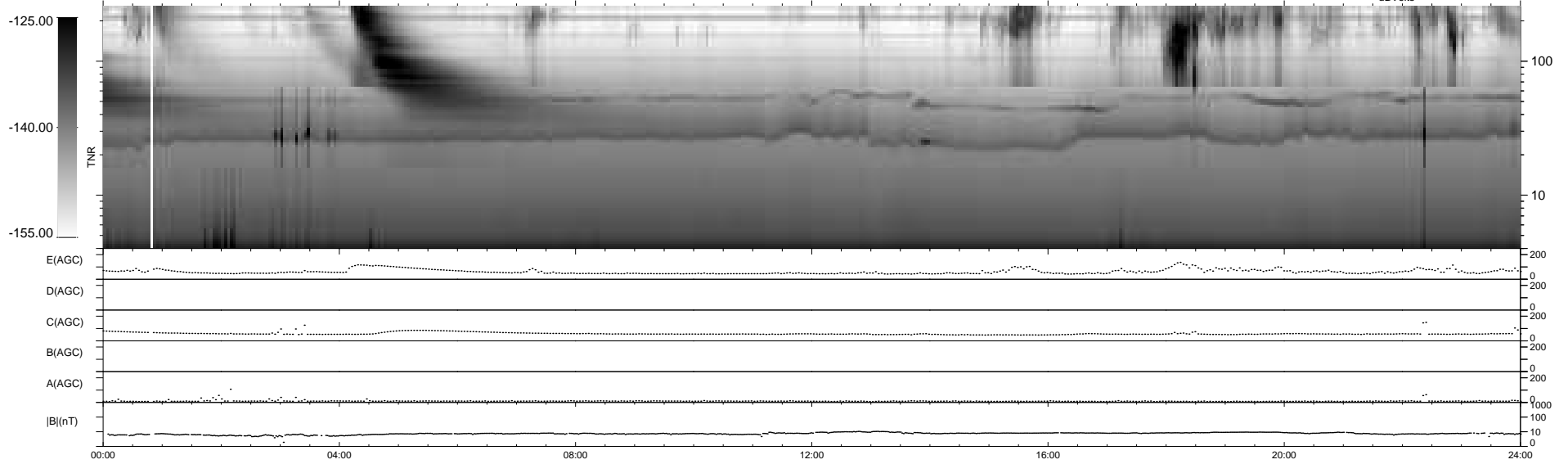
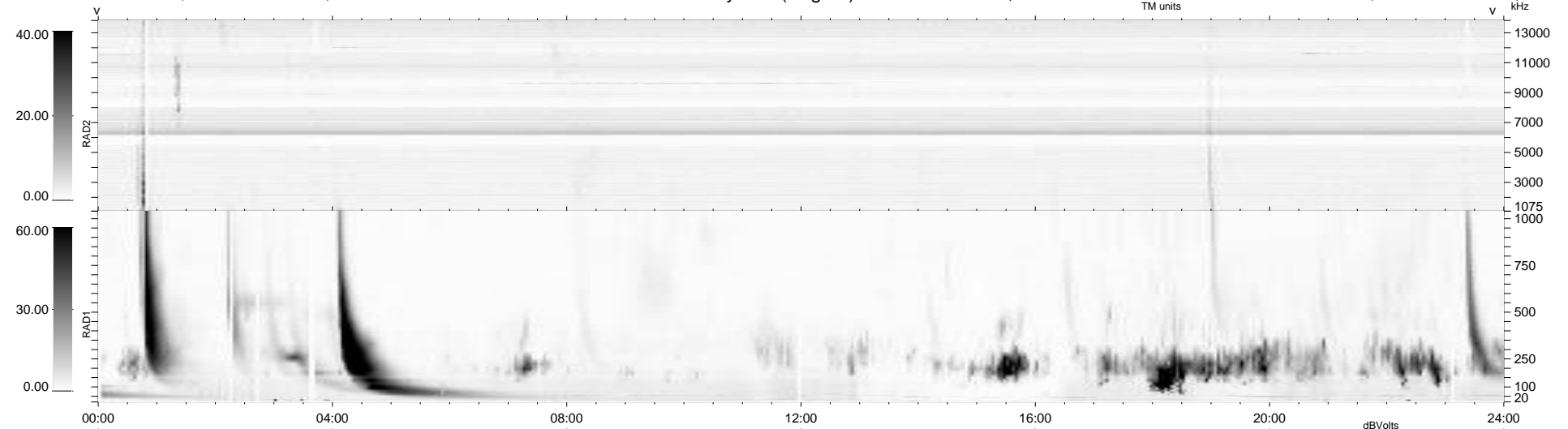
26 bad + 913 good MF/939MF projected (97%) - 0 missing MFs
 Avg interval = 180 secs
 Re = 195.25 (194.25, -16.18, -11.41 GSE)

windlib 2.0b

LZ version = v01

WIND/WAVES Summary Plot (Page 1) for 23-DEC-2015, DOY = 357

DAILY 2015-12-30 15:52:06
 Re = 194.85 (194.10, -12.55, -11.71 GSE)



RAD2
 Antenna Ey
 Mode LIN(1)
 SUM/SEP SEP
 Toggle OFF

RAD1
 Antenna
 Mode
 SUM/SEP
 Toggle

TNR
 Antenna ExEy
 Mode A-32
 Sweep ACE