

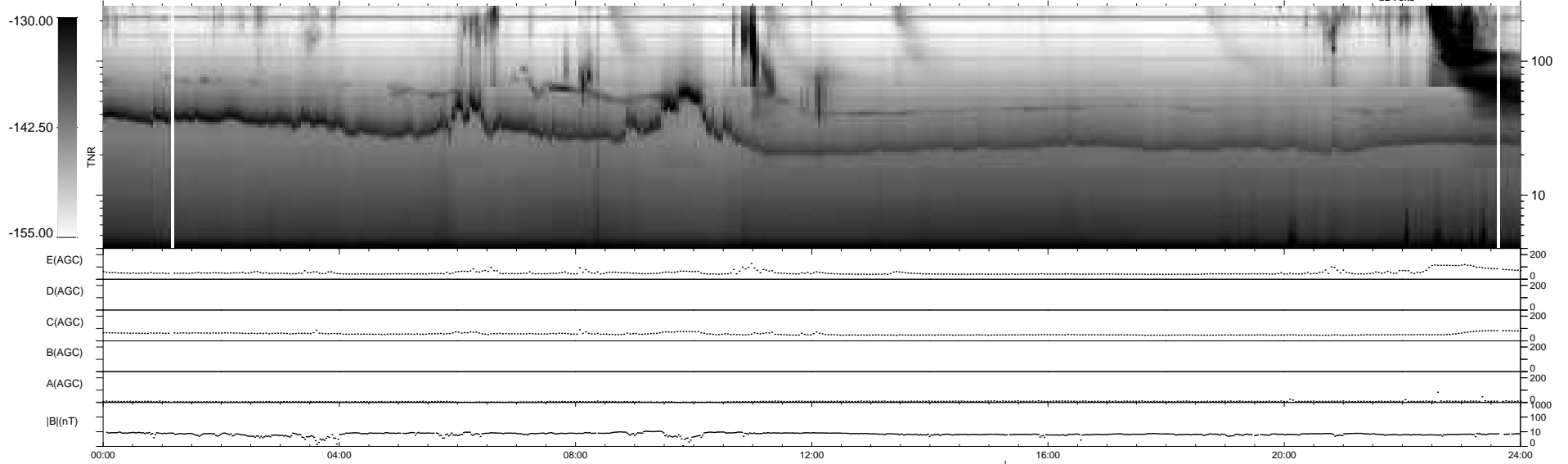
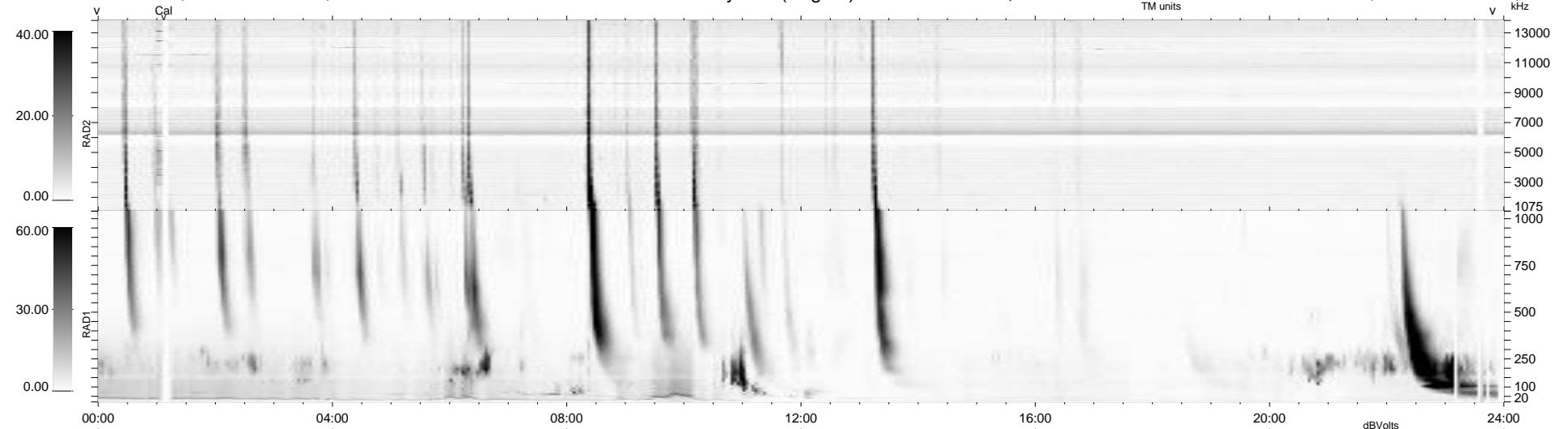
16 bad + 922 good MF/939MF projected (98%) - 1 missing MF  
 Avg interval = 180 secs  
 Re = 195.77 (194.44, -19.82, -11.09 GSE)

windlib 2.0b

LZ version = v01

### WIND/WAVES Summary Plot (Page 1) for 22-DEC-2015, DOY = 356

DAILY 2015-12-30 13:52:06  
 Re = 195.26 (194.25, -16.21, -11.41 GSE)



RAD2  
 Antenna Ey .....  
 Mode LIN(1) .....  
 SUM/SEP SEP .....  
 Toggle OFF .....  
 RAD1  
 Antenna Ex .....  
 Mode LIS(2/4) .....  
 SUM/SEP SUM .....  
 Toggle OFF .....  
 TNR  
 Antenna ExEy .....  
 Mode A-32 .....  
 Sweep ACE .....