

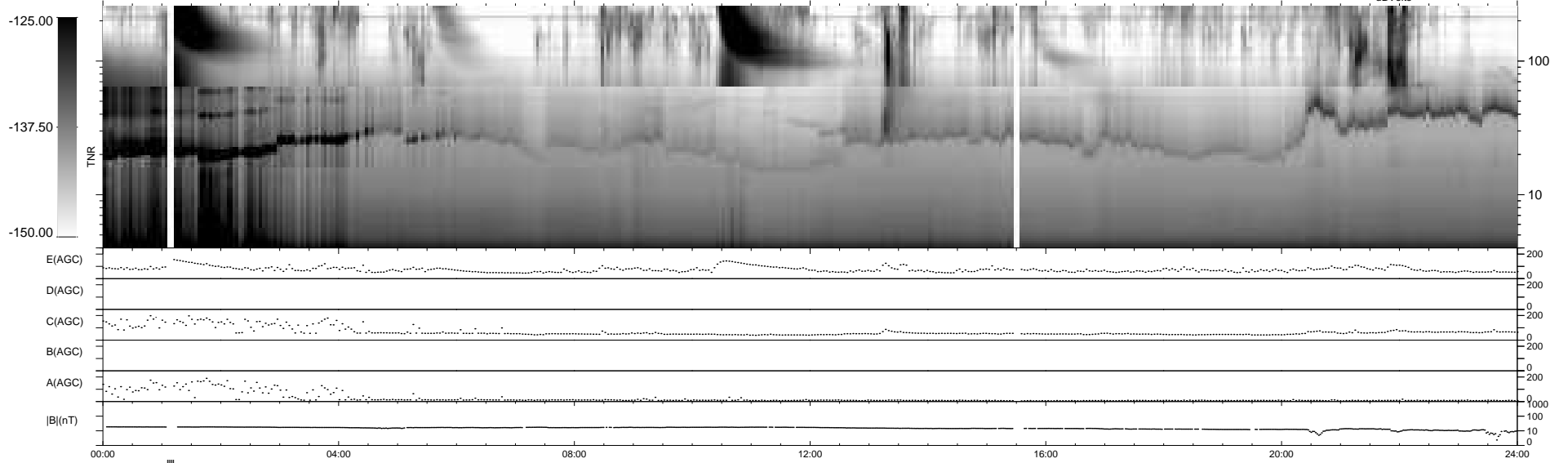
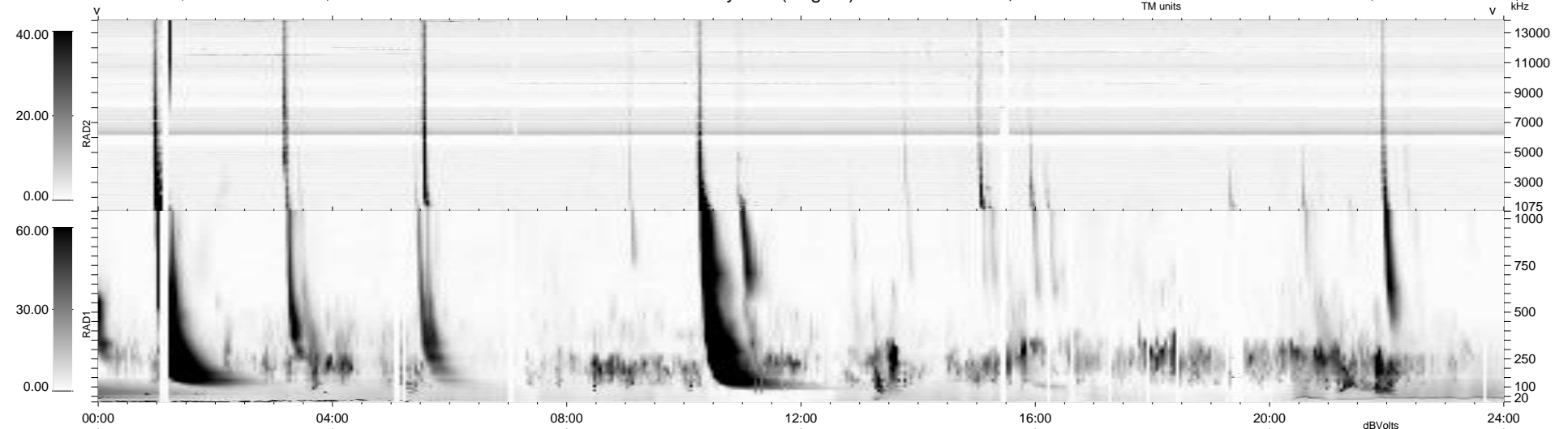
37 bad + 897 good MF/939MF projected (95%) - 5 missing MFs  
 Avg interval = 180 secs  
 Re = 196.39 (194.68, -23.45, -10.74 GSE)

windlib 2.0b

LZ version = v01

### WIND/WAVES Summary Plot (Page 1) for 21-DEC-2015, DOY = 355

DAILY 2015-12-29 18:52:27  
 Re = 195.77 (194.45, -19.85, -11.09 GSE)



RAD2  
 Antenna Ey  
 Mode LIN(1)  
 SUM/SEP SEP  
 Toggle OFF

RAD1  
 Antenna Ex  
 Mode LIS(2,4)  
 SUM/SEP SUM  
 Toggle OFF

TNR  
 Antenna ExEy  
 Mode A-32  
 Sweep ACE