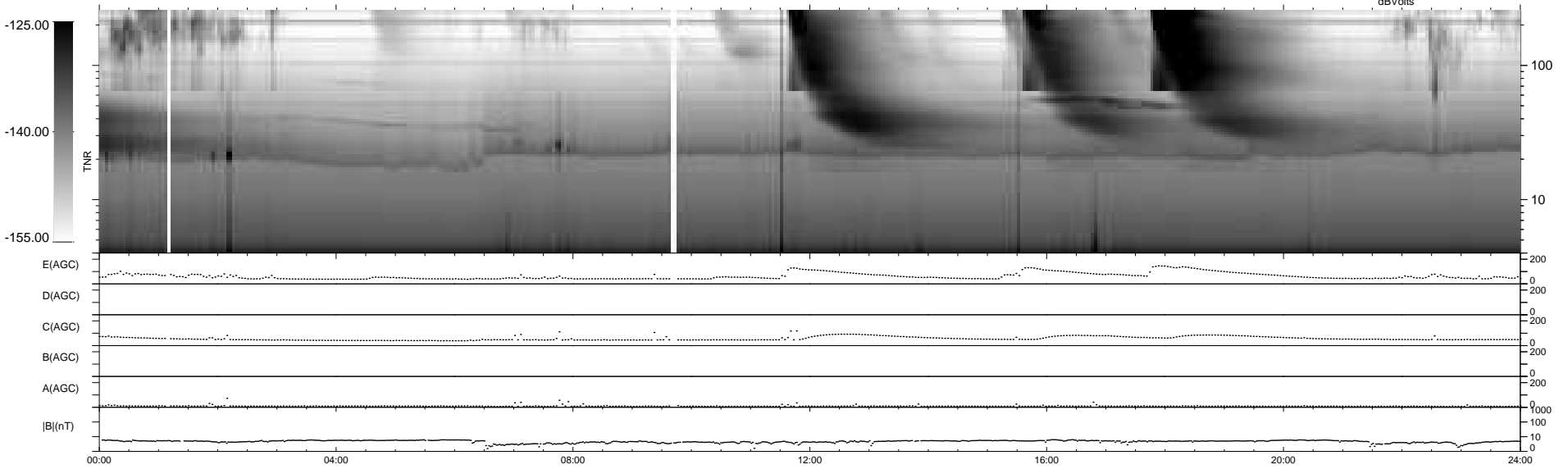
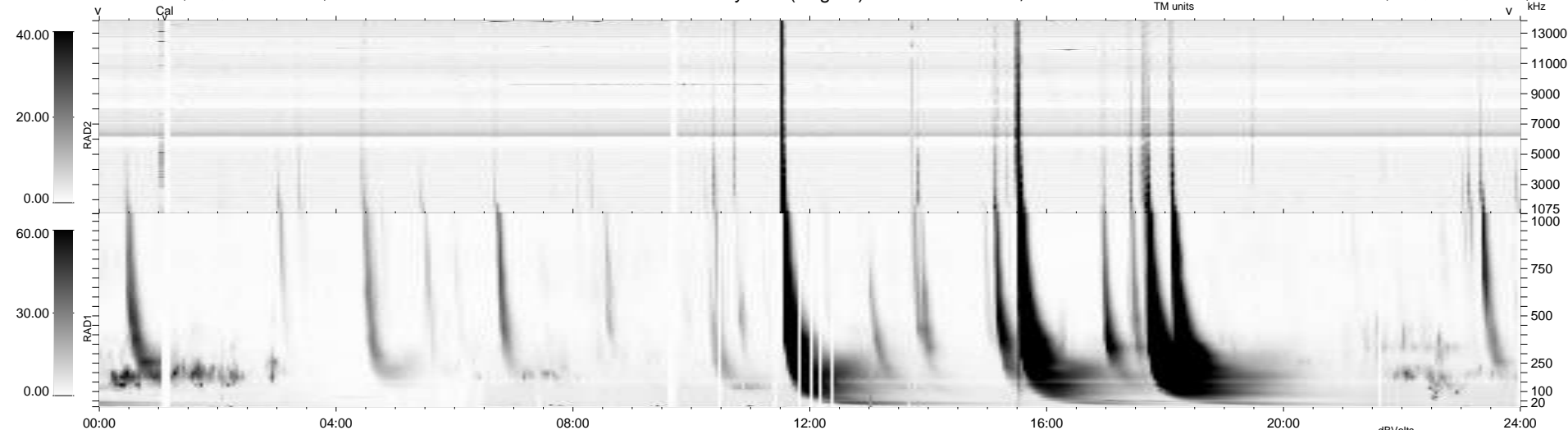


30 bad + 909 good MF/939MF projected (96%) - 0 missing MFs
 Avg interval = 180 secs
 Re = 198.82 (195.61, -34.28, -9.57 GSE)

windlib 2.0b LZ version = v01
 DAILY 2015-12-19 20:52:05
 Re = 197.93 (195.27, -30.71, -9.97 GSE)

WIND/WAVES Summary Plot (Page 1) for 18-DEC-2015, DOY = 352



RAD2
 Antenna Ey
 Mode LIN(1)
 SUM/SEP SEP
 Toggle OFF
 RAD1
 Antenna Ex
 Mode LIS(2,4)
 SUM/SEP SUM
 Toggle OFF
 TNR
 Antenna ExEy
 Mode A-32
 Sweep ACE