

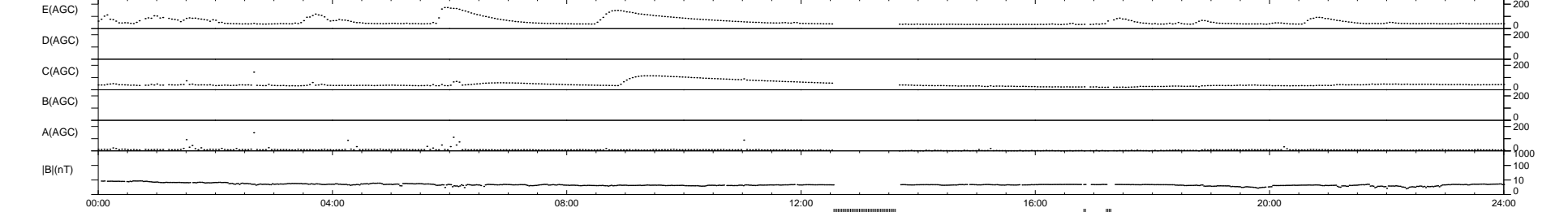
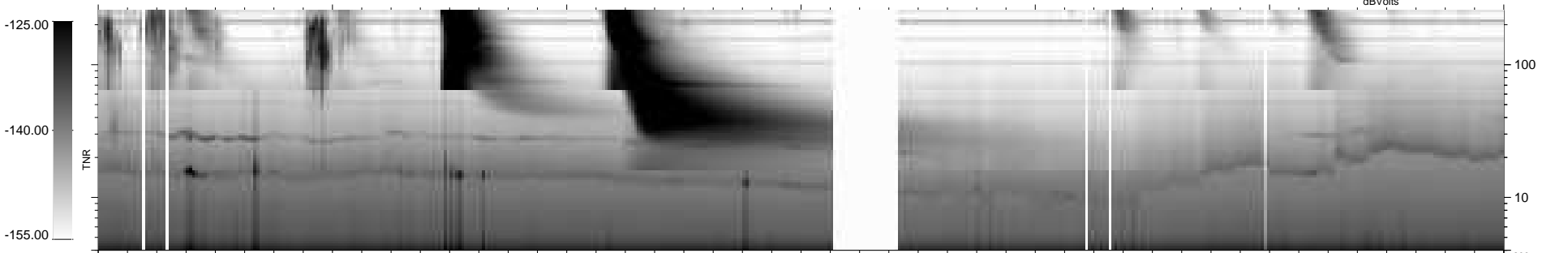
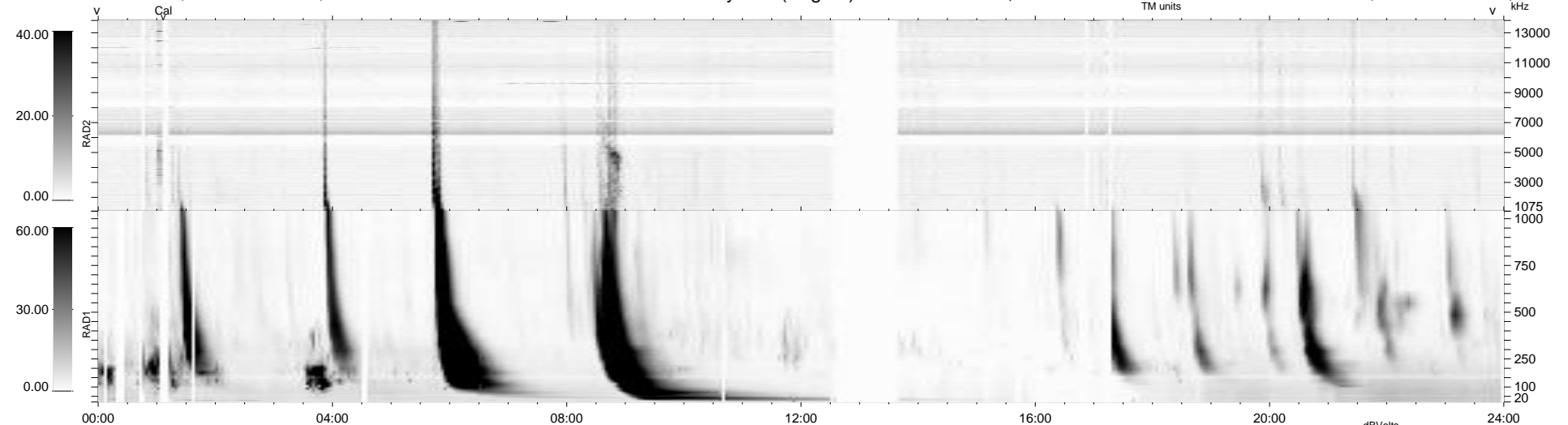
25 bad + 866 good MF/939MF projected (92%) - 48 missing MFs  
 Avg interval = 180 secs  
 Re = 200.83 (196.32, -41.40, -8.70 GSE)

windlib 2.0b

LZ version = v01

### WIND/WAVES Summary Plot (Page 1) for 16-DEC-2015, DOY = 350

DAILY 2015-12-17 22:52:05  
 Re = 199.80 (195.96, -37.88, -9.14 GSE)



```

RAD2
Antenna  Ey .....
Mode     LIN(1) .....
SUM/SEP  SEP .....
Toggle   OFF .....

RAD1
Antenna  Ex .....
Mode     LIS(2,4) .....
SUM/SEP  SUM .....
Toggle   OFF .....

TNR
Antenna  ExEy .....
Mode     A-32 .....
Sweep    ACE .....
  
```