

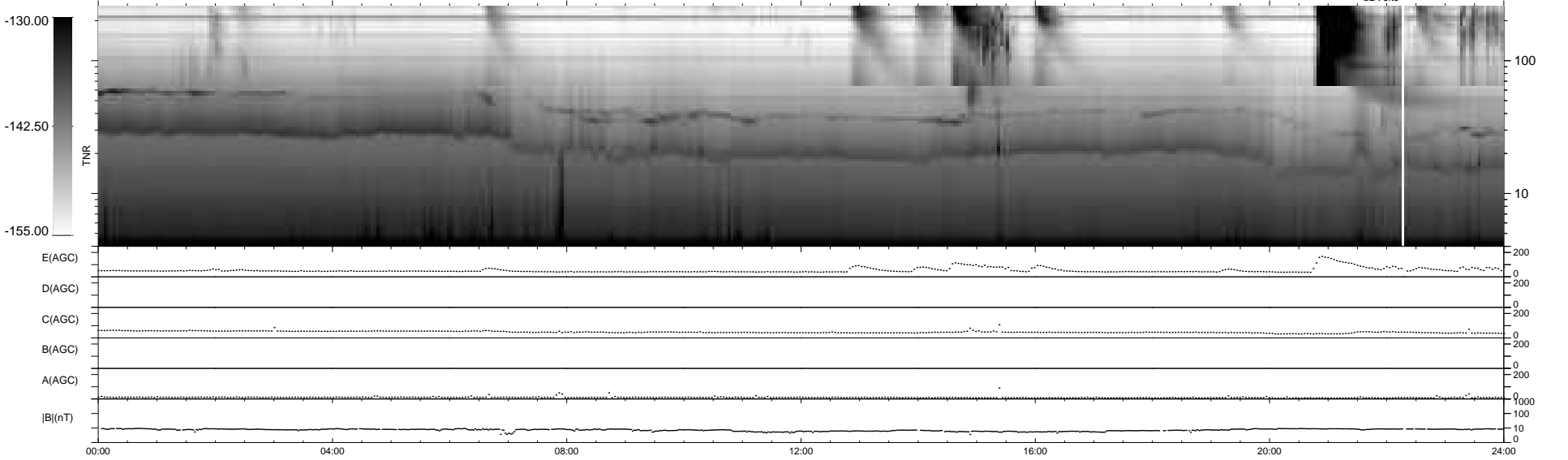
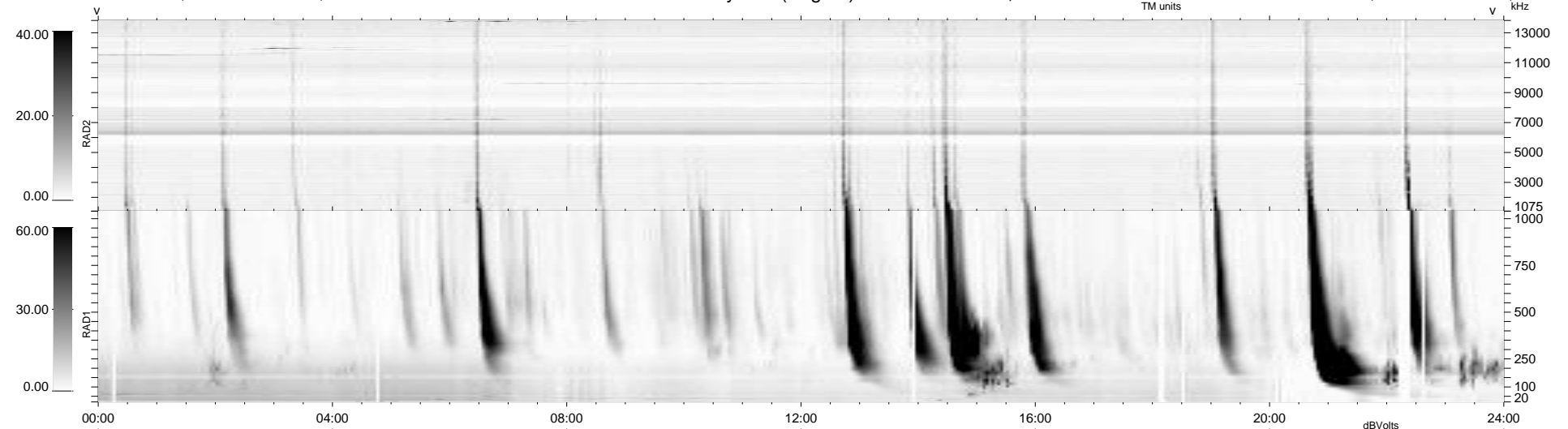
23 bad + 916 good MF/939MF projected (97%) - 0 missing MFs
 Avg interval = 180 secs
 Re = 201.92 (196.69, -44.90, -8.24 GSE)

windlib 2.0b

LZ version = v01

WIND/WAVES Summary Plot (Page 1) for 15-DEC-2015, DOY = 349

DAILY 2015-12-16 21:52:04
 Re = 200.83 (196.32, -41.42, -8.70 GSE)



```

RAD2
Antenna Ey .....
Mode LIN(1) .....
SUM/SEP SEP .....
Toggle OFF .....

RAD1
Antenna Ex .....
Mode LIS(2,4) .....
SUM/SEP SUM .....
Toggle OFF .....

TNR
Antenna ExEy .....
Mode A-32 .....
Sweep ACE .....
  
```