

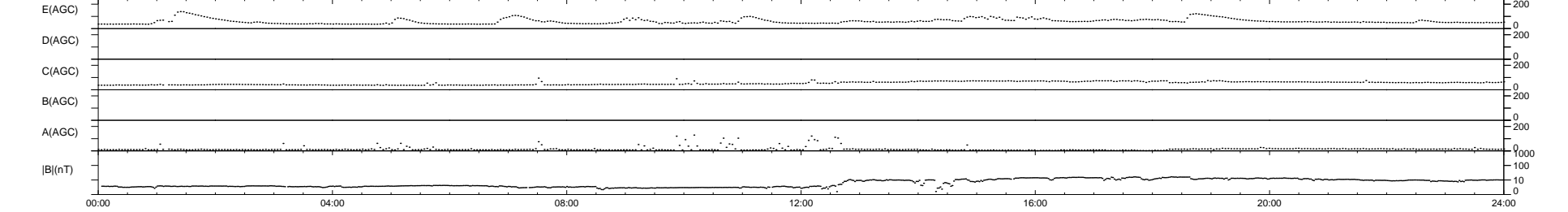
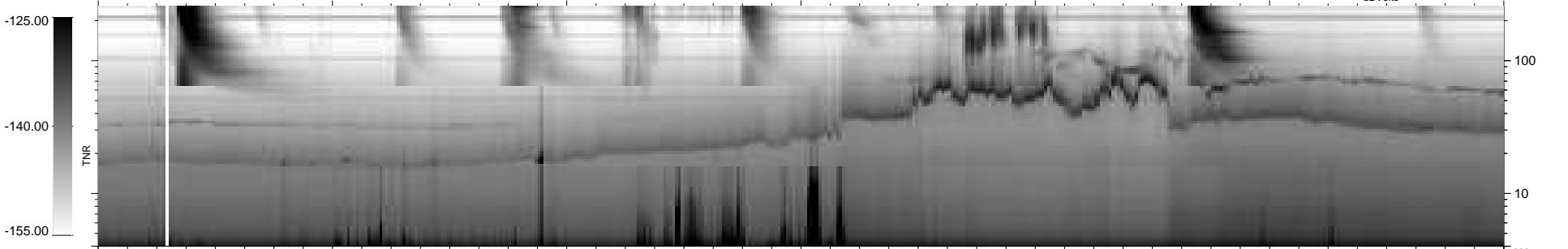
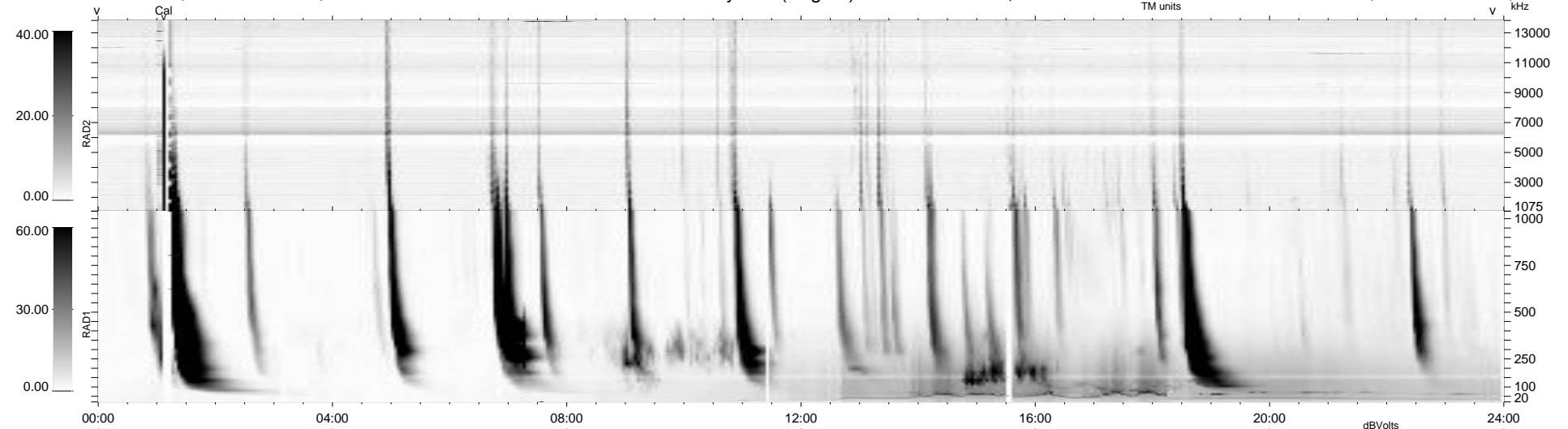
5 bad + 934 good MF/939MF projected (99%) - 0 missing MFs  
 Avg interval = 180 secs  
 Re = -203.06 (197.06, -48.35, -7.78 GSE)

windlib 2.0b

LZ version = v01

### WIND/WAVES Summary Plot (Page 1) for 14-DEC-2015, DOY = 348

DAILY 2015-12-15 10:52:05  
 Re = 201.93 (196.69, -44.93, -8.24 GSE)



```

RAD2
Antenna Ey .....
Mode LIN(1) .....
SUM/SEP SEP .....
Toggle OFF .....

RAD1
Antenna Ex .....
Mode LIS(2,4) .....
SUM/SEP SUM .....
Toggle OFF .....

TNR
Antenna ExEy .....
Mode A-32 .....
Sweep ACE .....
  
```