

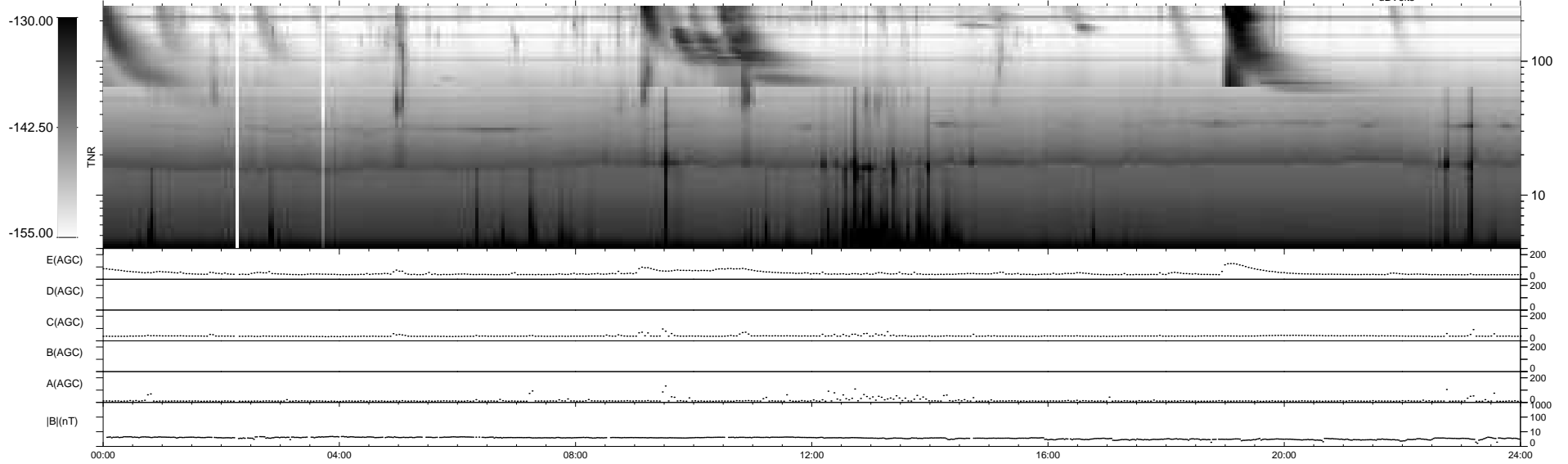
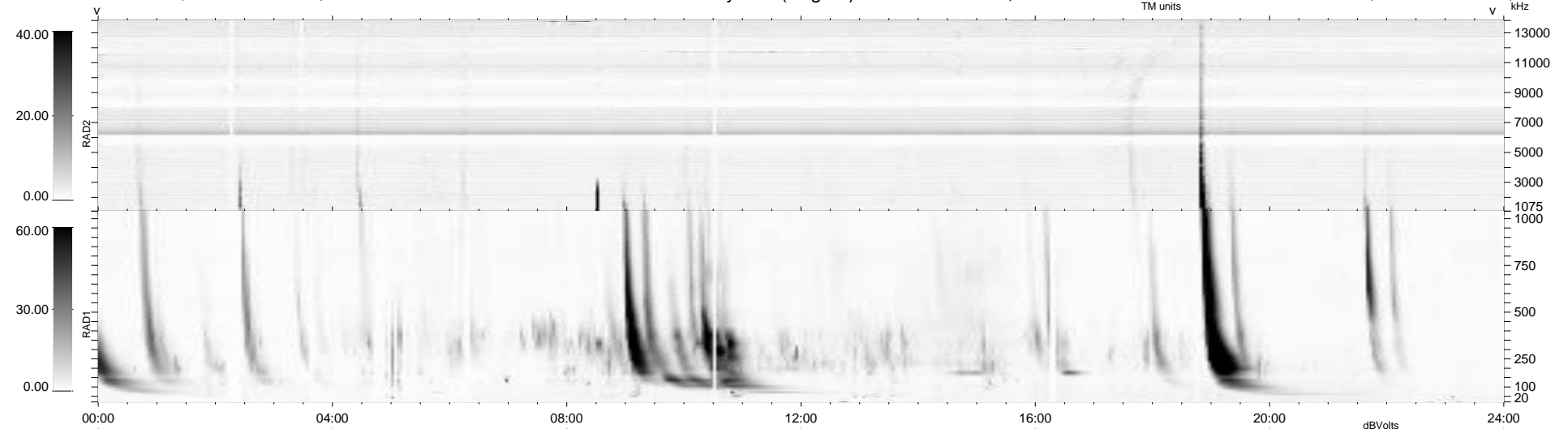
39 bad + 900 good MF/939MF projected (95%) - 0 missing MFs
 Avg interval = 180 secs
 Re = 204.23 (197.43, -51.75, -7.30 GSE)

windlib 2.0b

LZ version = v01

WIND/WAVES Summary Plot (Page 1) for 13-DEC-2015, DOY = 347

DAILY 2015-12-14 17:52:06
 Re = 203.06 (197.06, -48.38, -7.78 GSE)



RAD2
 Antenna Ey
 Mode LIN(1)
 SUM/SEP SEP
 Toggle OFF

RAD1
 Antenna Ex
 Mode LIS(2,4)
 SUM/SEP SUM
 Toggle OFF

TNR
 Antenna ExEy
 Mode A-32
 Sweep ACE