

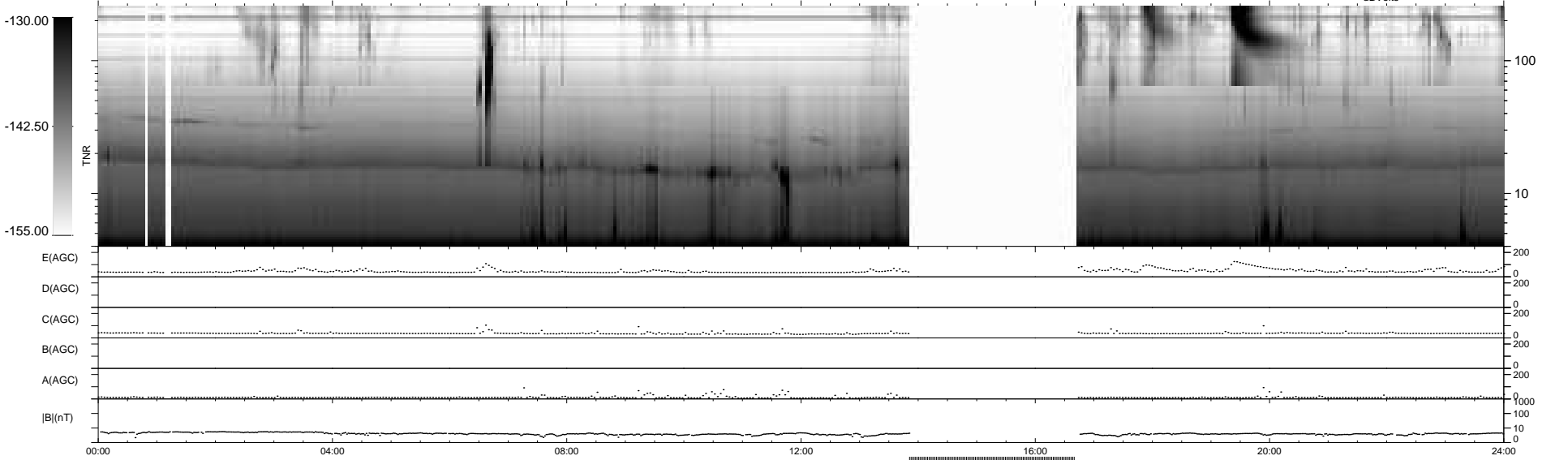
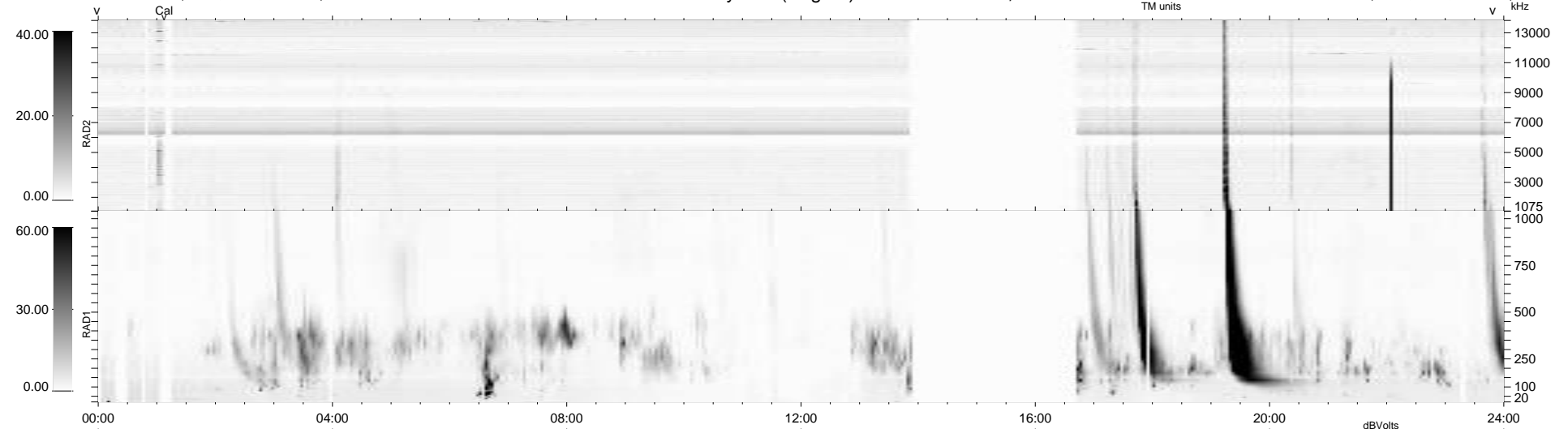
23 bad + 806 good MF/940MF projected (85%) - 111 missing MFs
 Avg interval = 180 secs
 Re = 205.44 (197.80, -55.06, -6.82 GSE)

windlib 2.0b

LZ version = v01

WIND/WAVES Summary Plot (Page 1) for 12-DEC-2015, DOY = 346

DAILY 2015-12-14 00:52:06
 Re = 204.24 (197.43, -51.77, -7.30 GSE)



RAD2 Antenna Ey
 Mode LIN(1)
 SUM/SEP SEP
 Toggle OFF
 RAD1 Antenna
 Mode
 SUM/SEP
 Toggle
 TNR Antenna ExEy
 Mode A-32
 Sweep ACE