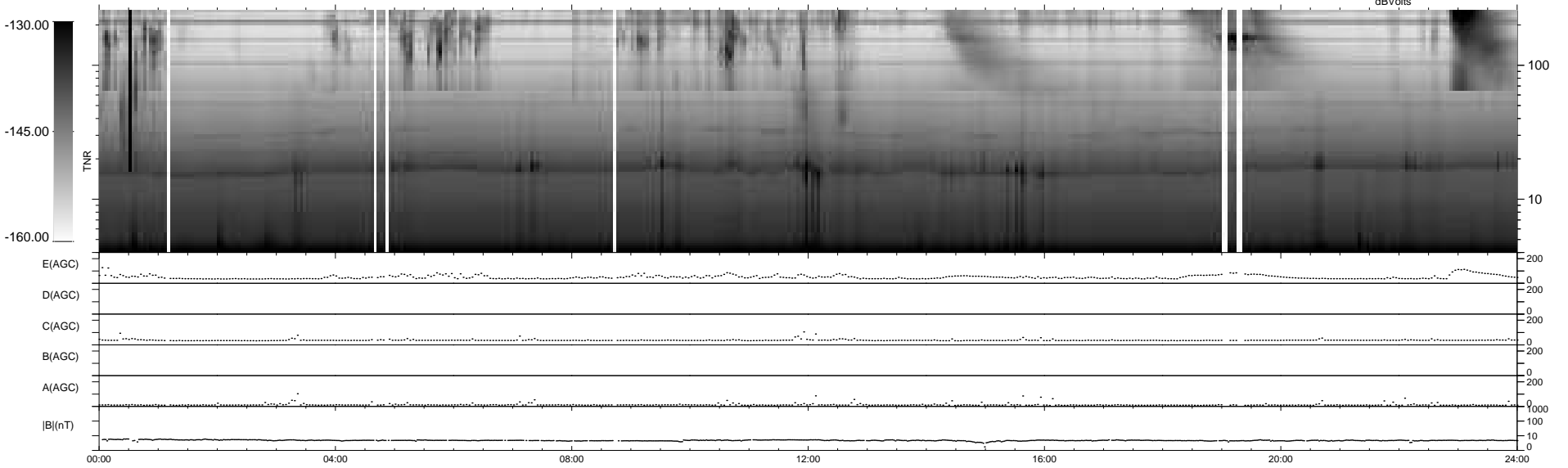
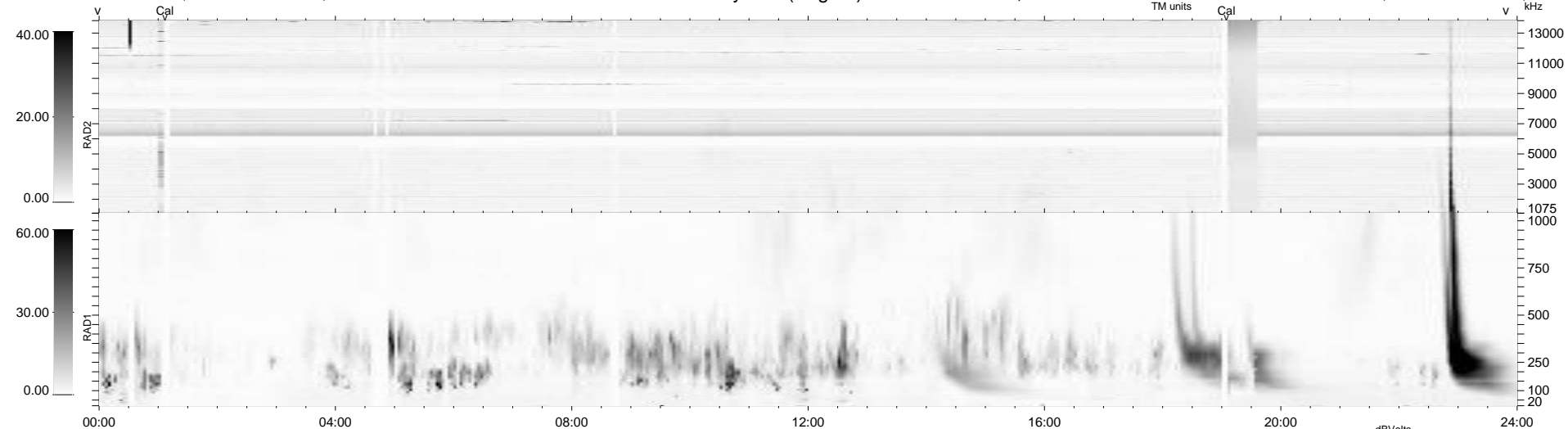


32 bad + 907 good MF/939MF projected (96%) - 0 missing MFs
 Avg interval = 180 secs
 Re = 210.42 (199.28, -67.41, -4.80 GSE)

windlib 2.0b LZ version = v01
 DAILY 2015-12-09 23:52:04
 Re = 209.17 (198.90, -64.50, -5.31 GSE)

WIND/WAVES Summary Plot (Page 1) for 08-DEC-2015, DOY = 342



RAD2	Antenna	Ey	LIN(1)	LIN(1)
	Mode	LIN(1)	SUM/SEP	SEP	SUM/SEP	SEP
	Toggle	OFF				
RAD1	Antenna	Ex	LIS(2.4)	LIS(2.4)
	Mode	LIS(2.4)	SUM/SEP	SUM	SUM/SEP	SUM
	Toggle	OFF				
TNR	Antenna	ExEy				
	Mode	A-32				
	Sweep	ACE				