

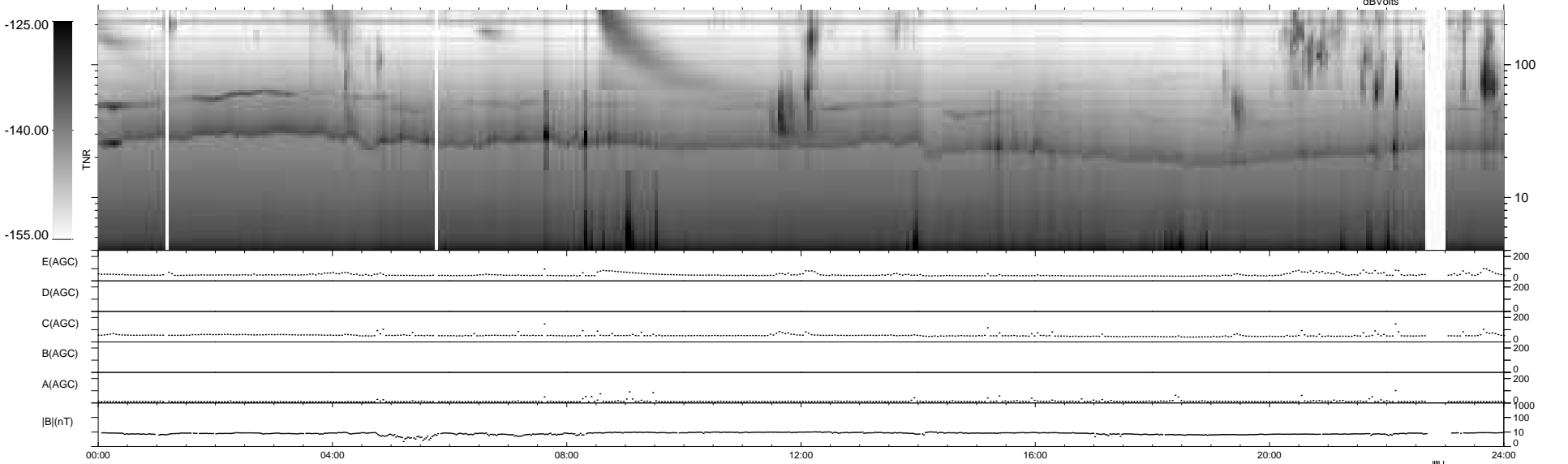
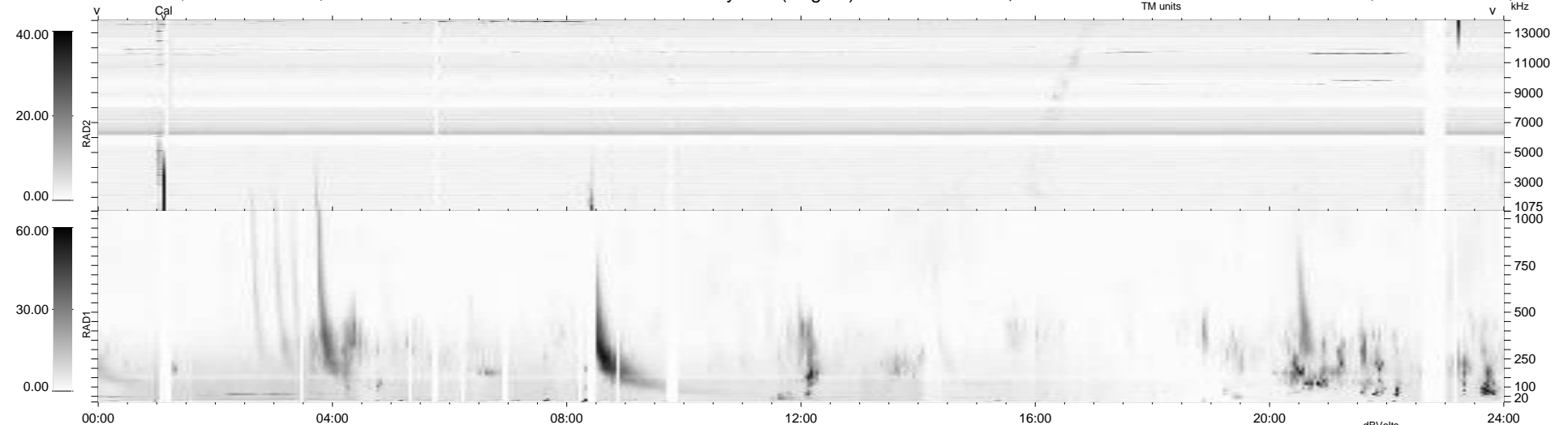
48 bad + 885 good MF/939MF projected (94%) - 6 missing MFs
 Avg interval = 180 secs
 Re = - 212.96 (200.06, -72.90, -3.75 GSE)

windlib 2.0b

LZ version = v01

WIND/WAVES Summary Plot (Page 1) for 06-DEC-2015, DOY = 340

DAILY 2015-12-07 17:52:05
 Re = 211.70 (199.66, -70.23, -4.27 GSE)



RAD2
 Antenna Ey
 Mode LIN(1)
 SUM/SEP SEP
 Toggle OFF

RAD1
 Antenna Ex
 Mode LIS(2,4)
 SUM/SEP SUM
 Toggle OFF

TNR
 Antenna ExEy
 Mode A-32
 Sweep ACE