

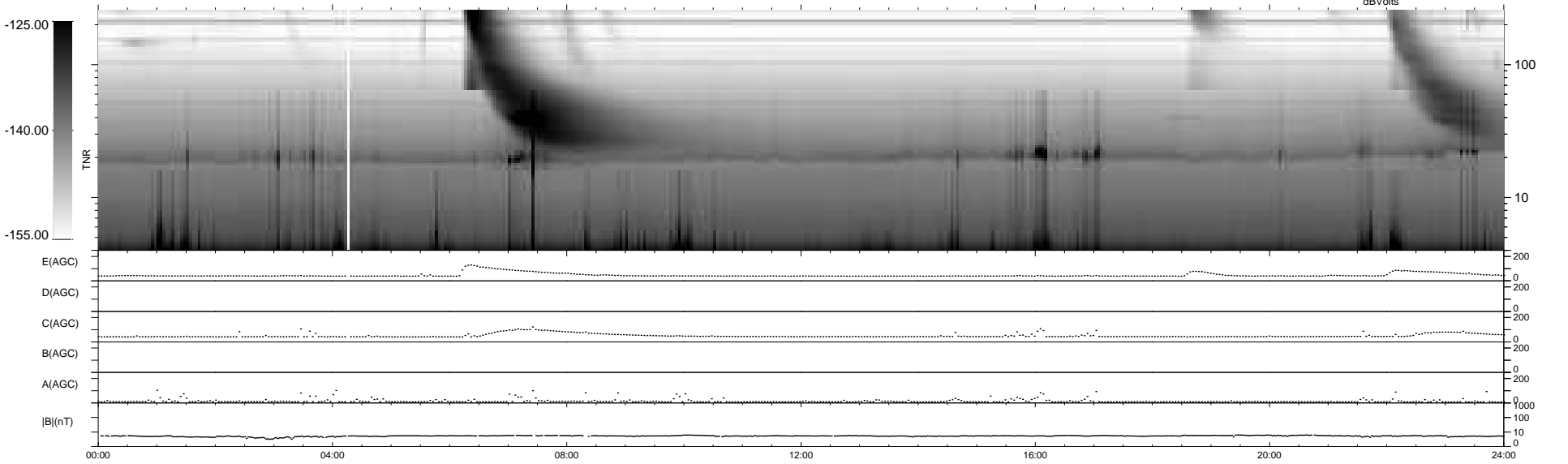
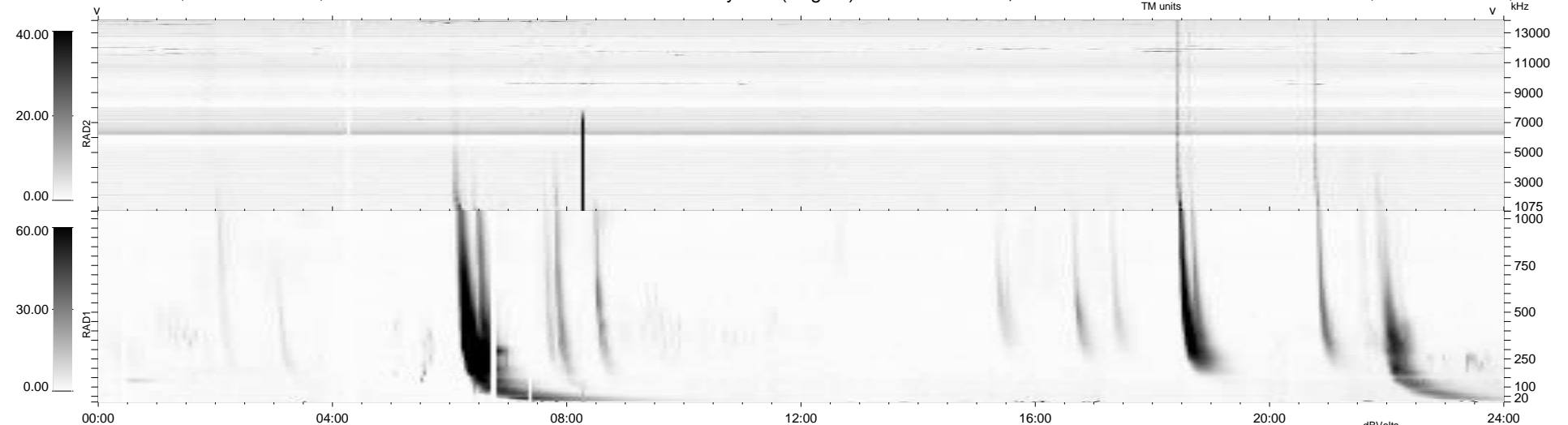
32 bad + 907 good MF/939MF projected (96%) - 0 missing MFs
Avg interval = 180 secs
Re = 216.77 (201.40, -80.14, -2.14 GSE)

windlib 2.0b

LZ version = v01

WIND/WAVES Summary Plot (Page 1) for 03-DEC-2015, DOY = 337

DAILY 2015-12-04 19:52:06
Re = 215.51 (200.93, -77.88, -2.68 GSE)



RAD2
Antenna Ey
Mode LIN(1)
SUM/SEP SEP
Toggle OFF

RAD1
Antenna Ex
Mode LIS(2,4)
SUM/SEP SUM
Toggle OFF

TNR
Antenna ExEy
Mode A-32
Sweep ACE