

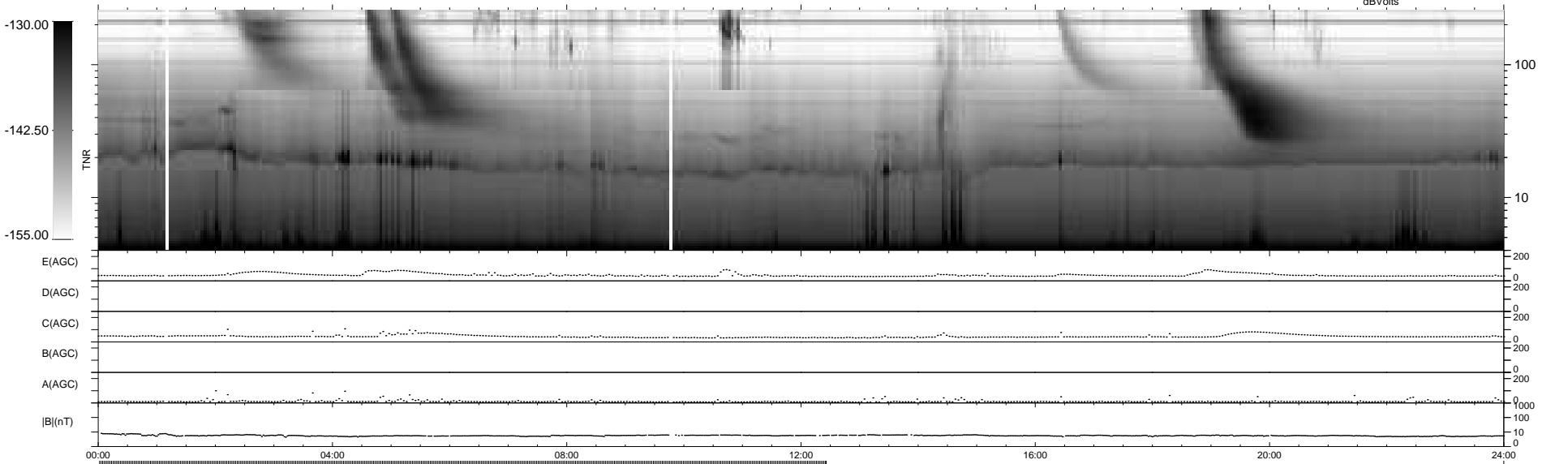
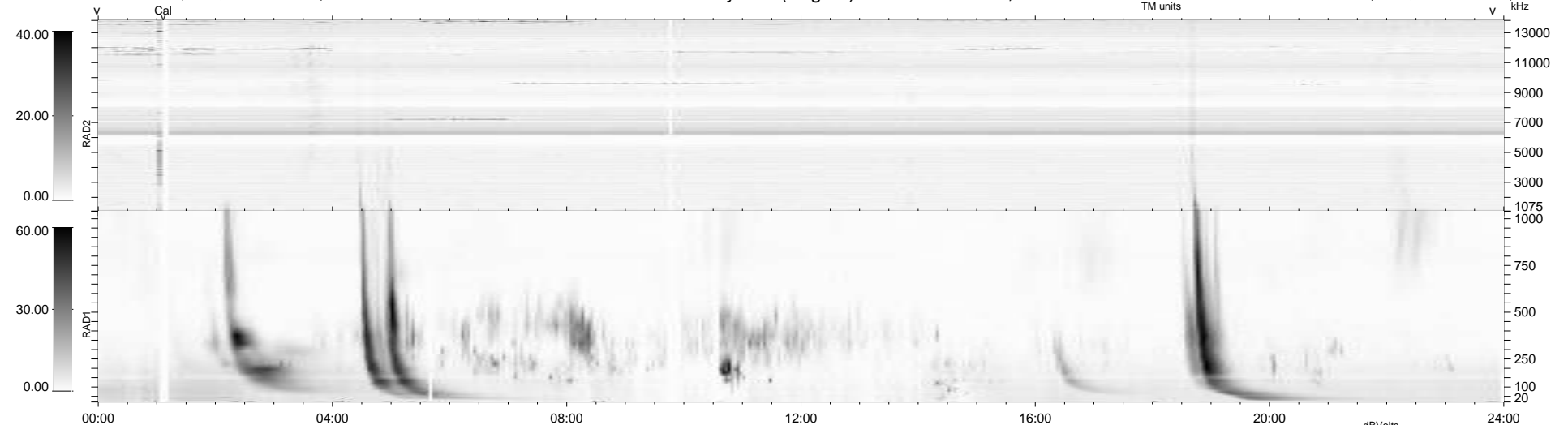
30 bad + 908 good MF/1426MF projected (63%) - 488 missing MFs
 Avg interval = 180 secs
 Re = 218.05 (201.92, -82.27, -1.59 GSE)

windlib 2.0b

LZ version = v02

WIND/WAVES Summary Plot (Page 1) for 02-DEC-2015, DOY = 336

DAILY 2015-12-07 11:52:05
 Re = 216.78 (201.41, -80.16, -2.14 GSE)



RAD2
 Antenna Ey
 Mode LIN(1)
 SUM/SEP SEP
 Toggle OFF
 RAD1
 Antenna Ex
 Mode LIS(2,4)
 SUM/SEP SUM
 Toggle OFF
 TNR
 Antenna ExEy
 Mode A-32
 Sweep ACE