

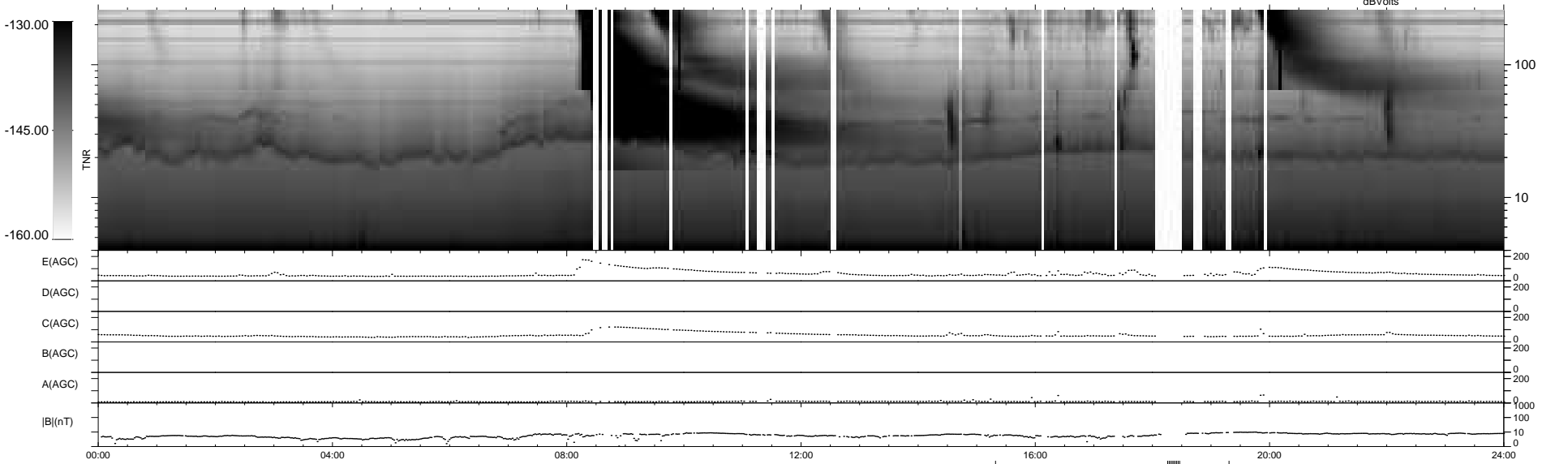
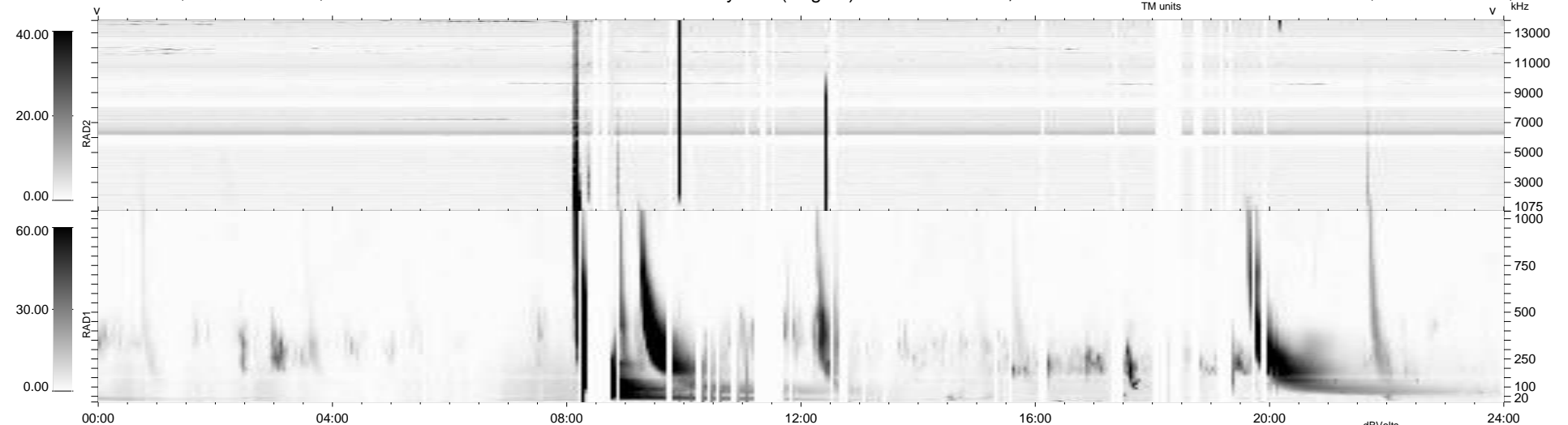
141 bad + 787 good MF/939MF projected (83%) - 11 missing MFs  
 Avg interval = 180 secs  
 Re = 219.32 (202.48, -84.26, -1.05 GSE)

windlib 2.0b

LZ version = v01

### WIND/WAVES Summary Plot (Page 1) for 01-DEC-2015, DOY = 335

DAILY 2015-12-02 16:52:07  
 Re = 218.05 (201.93, -82.28, -1.59 GSE)



```

RAD2
Antenna Ey .....
Mode LIN(1) .....
SUM/SEP SEP .....
Toggle OFF .....

RAD1
Antenna Ex .....
Mode LIS(2,4) .....
SUM/SEP SUM .....
Toggle OFF .....

TNR
Antenna ExEy .....
Mode A-32 .....
Sweep ACE .....
  
```