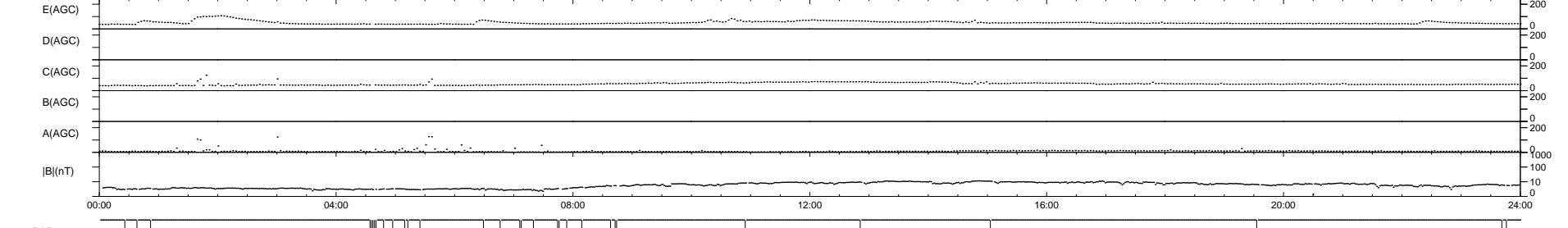
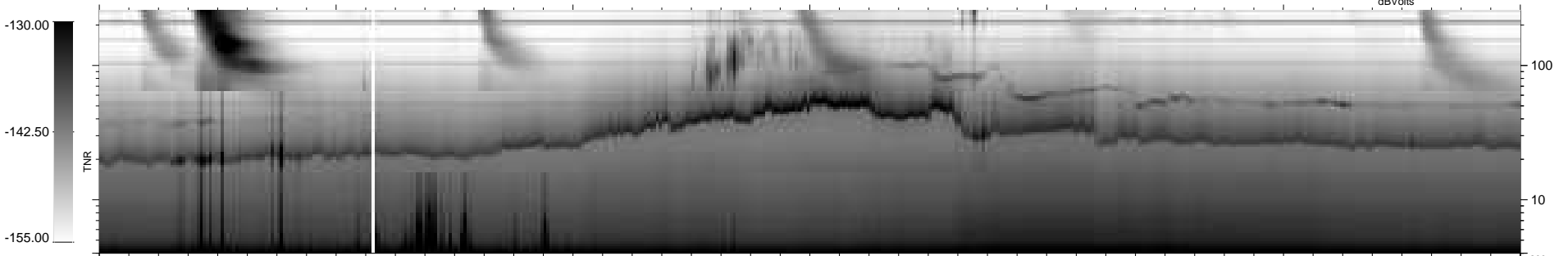
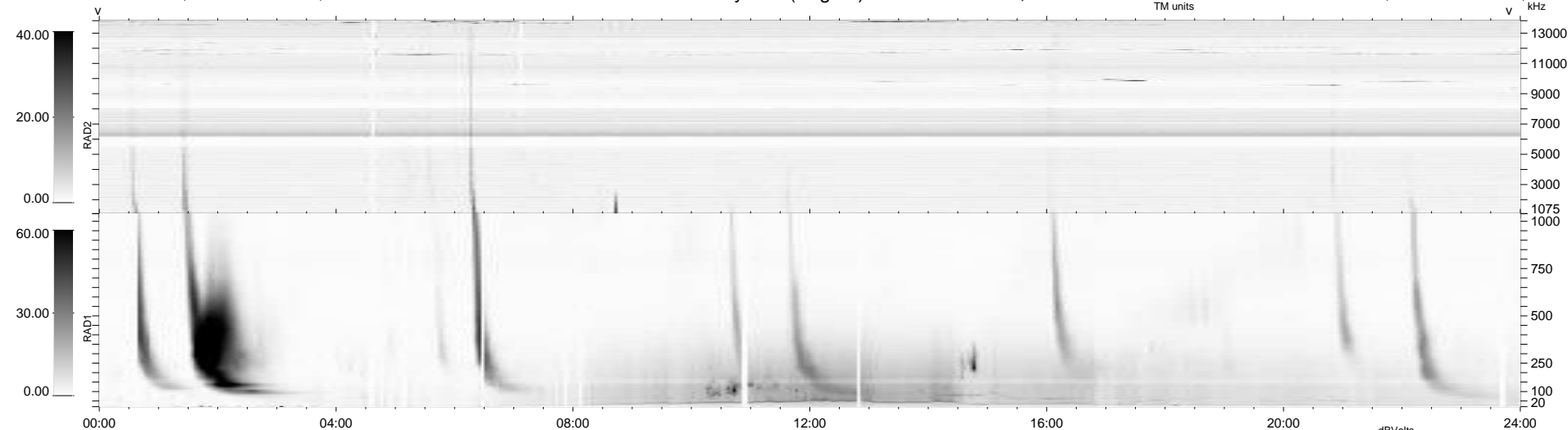


31 bad + 908 good MF/939MF projected (96%) - 0 missing MFs
 Avg interval = 180 secs
 Re = 243.22 (221.80, -99.41, 8.68 GSE)

windlib 2.0b LZ version = v03
 DAILY 2015-11-24 17:52:05
 Re = 242.04 (220.52, -99.44, 8.21 GSE)

WIND/WAVES Summary Plot (Page 1) for 13-NOV-2015, DOY = 317



RAD2
 Antenna Ey
 Mode LIN(1)
 SUM/SEP SEP
 Toggle OFF

RAD1
 Antenna Ex
 Mode LIS(2,4)
 SUM/SEP SUM
 Toggle OFF

TNR
 Antenna ExEy
 Mode A-32
 Sweep ACE