

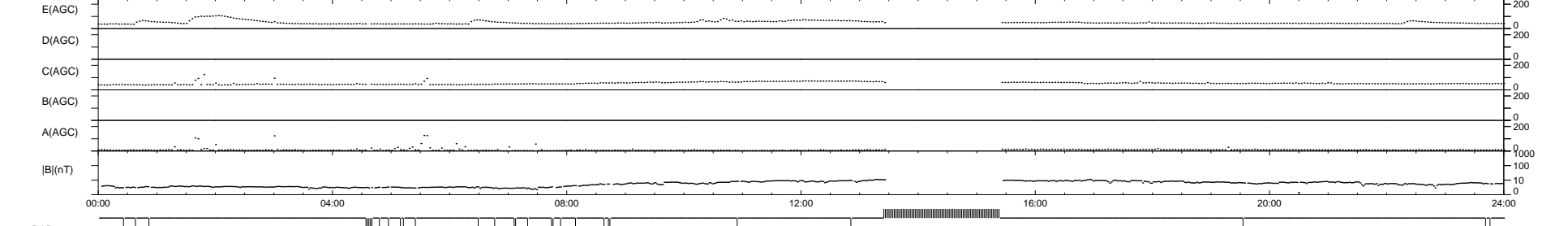
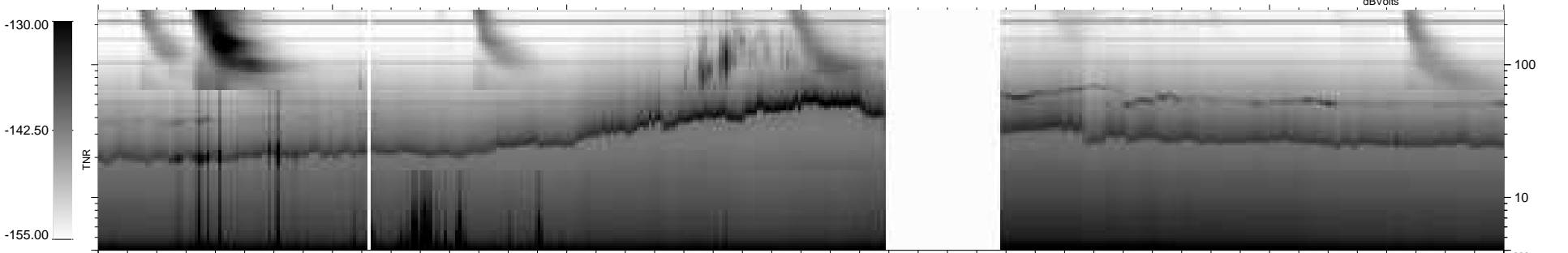
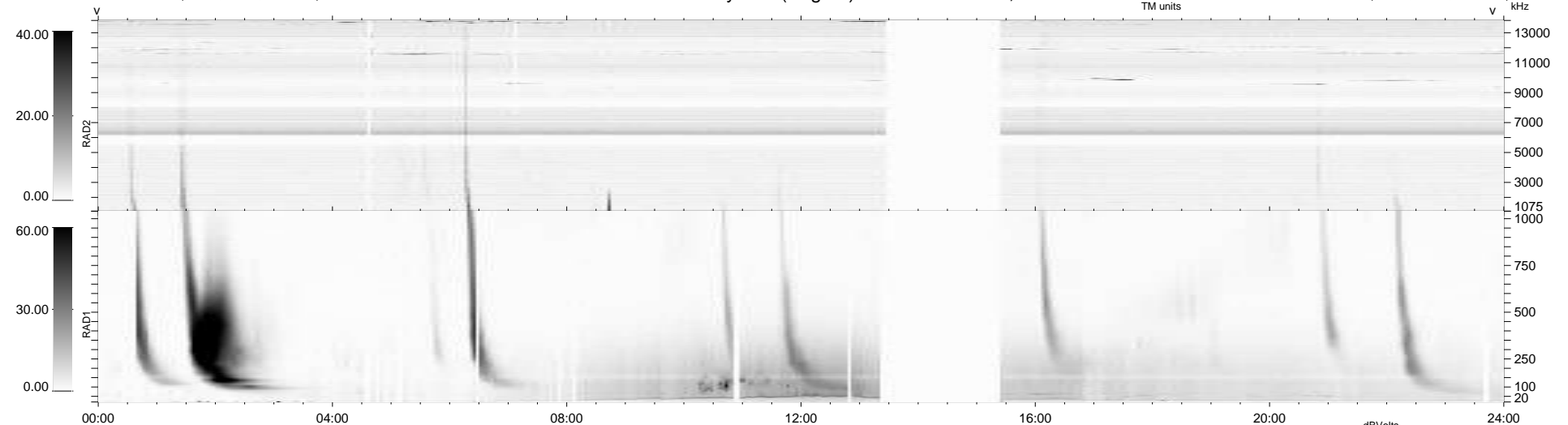
30 bad + 831 good MF/939MF projected (88%) - 78 missing MFs  
 Avg interval = 180 secs  
 Re = 243.22 (221.80, -99.41, 8.68 GSE)

windlib 2.0b

LZ version = v02

### WIND/WAVES Summary Plot (Page 1) for 13-NOV-2015, DOY = 317

DAILY 2015-11-20 15:52:04  
 Re = 242.04 (220.52, -99.44, 8.21 GSE)



RAD2  
 Antenna Ey .....  
 Mode LIN(1) .....  
 SUM/SEP SEP .....  
 Toggle OFF .....  
 RAD1  
 Antenna Ex .....  
 Mode LIS(2,4) .....  
 SUM/SEP SUM .....  
 Toggle OFF .....  
 TNR  
 Antenna ExEy .....  
 Mode A-32 .....  
 Sweep ACE .....