

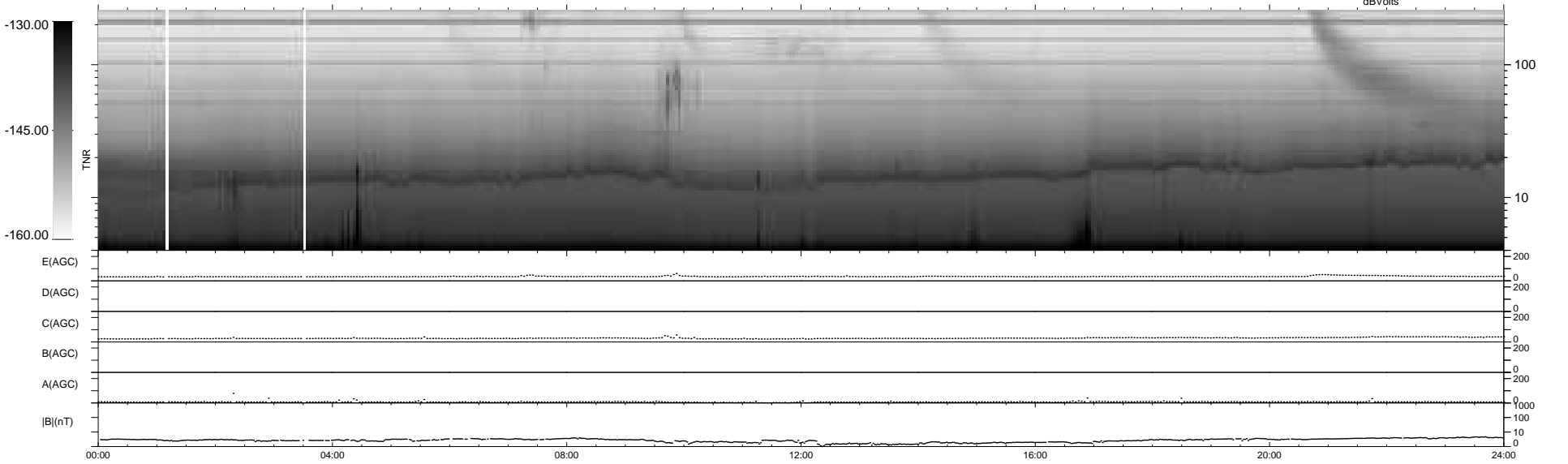
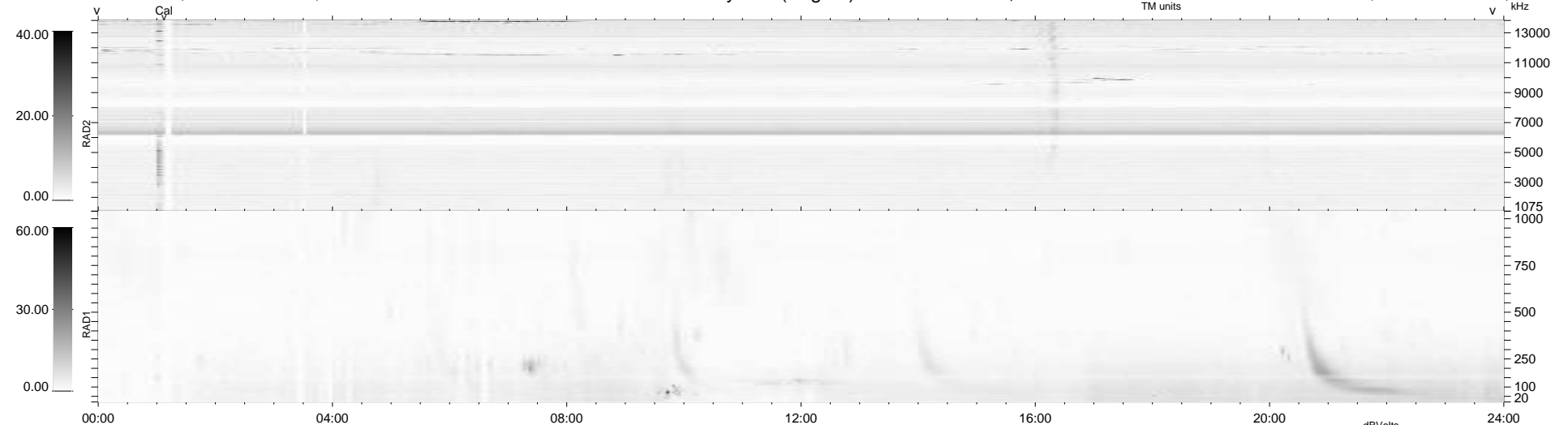
30 bad + 910 good MF/940MF projected (96%) - 0 missing MFs
 Avg interval = 180 secs
 Re = 244.35 (223.09, -99.26, 9.15 GSE)

windlib 2.0b

LZ version = v01

WIND/WAVES Summary Plot (Page 1) for 12-NOV-2015, DOY = 316

DAILY 2015-11-14 16:52:06
 Re = 243.23 (221.81, -99.41, 8.69 GSE)



```

RAD2
Antenna Ey .....
Mode LIN(1) .....
SUM/SEP SEP .....
Toggle OFF .....

RAD1
Antenna Ex .....
Mode LIS(2,4) .....
SUM/SEP SUM .....
Toggle OFF .....

TNR
Antenna ExEy .....
Mode A-32 .....
Sweep ACE .....
  
```