

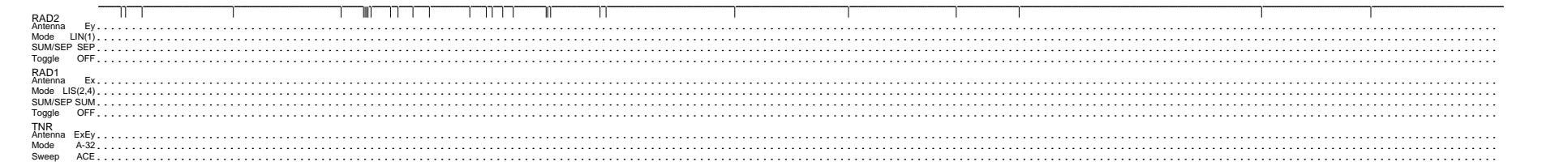
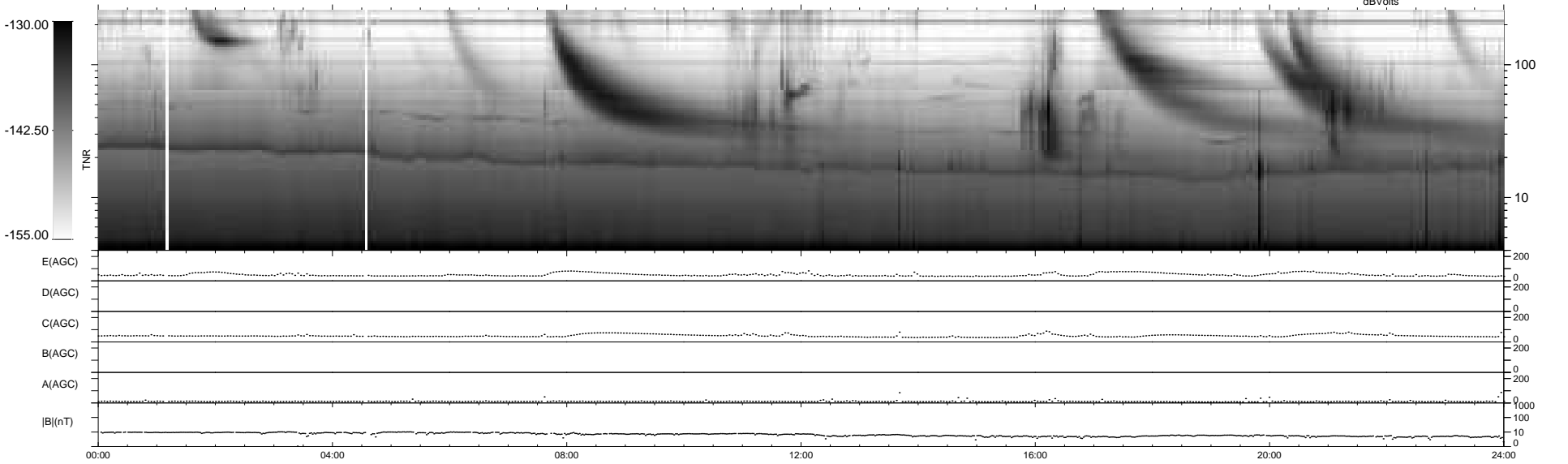
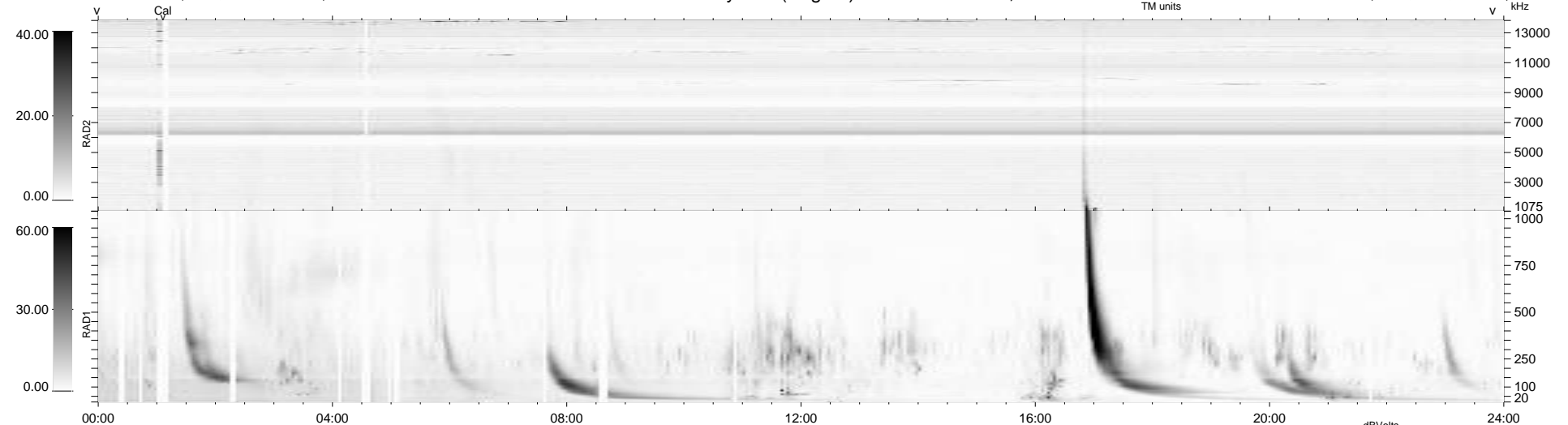
30 bad + 909 good MF/939MF projected (96%) - 0 missing MFs  
 Avg interval = 180 secs  
 Re = -246.41 (225.61, -98.59, 10.04 GSE)

windlib 2.0b

LZ version = v01

### WIND/WAVES Summary Plot (Page 1) for 10-NOV-2015, DOY = 314

DAILY 2015-11-11 16:52:06  
 Re = 245.42 (224.37, -98.99, 9.60 GSE)



```

RAD2
Antenna Ey .....
Mode LIN(1) .....
SUM/SEP SEP .....
Toggle OFF .....

RAD1
Antenna Ex .....
Mode LIS(2,4) .....
SUM/SEP SUM .....
Toggle OFF .....

TNR
Antenna ExEy .....
Mode A-32 .....
Sweep ACE .....
  
```