

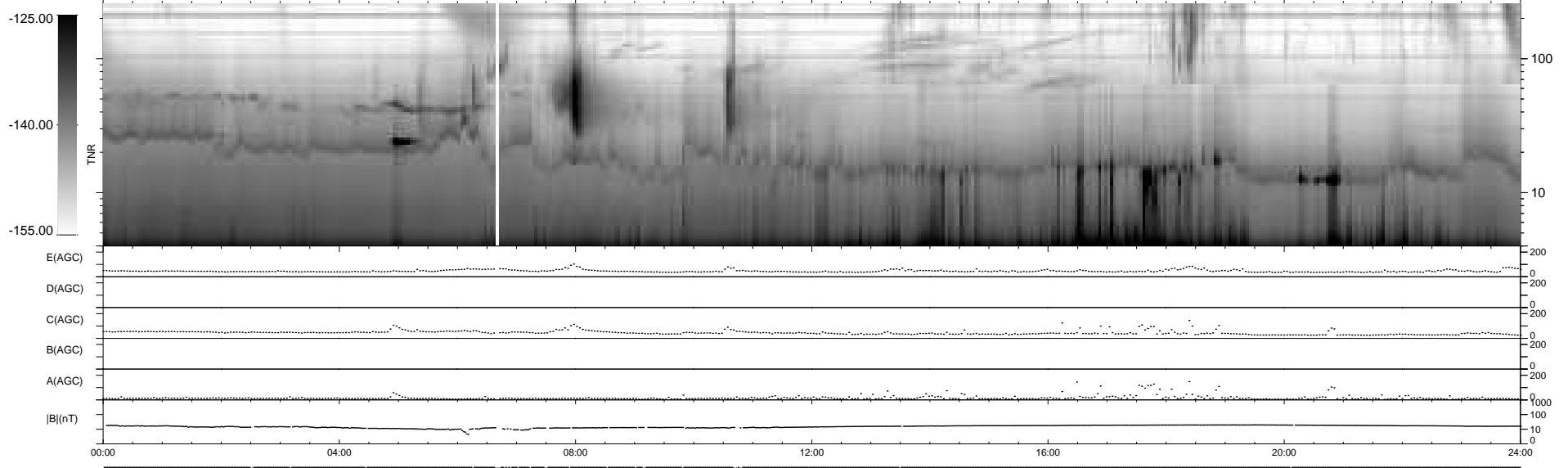
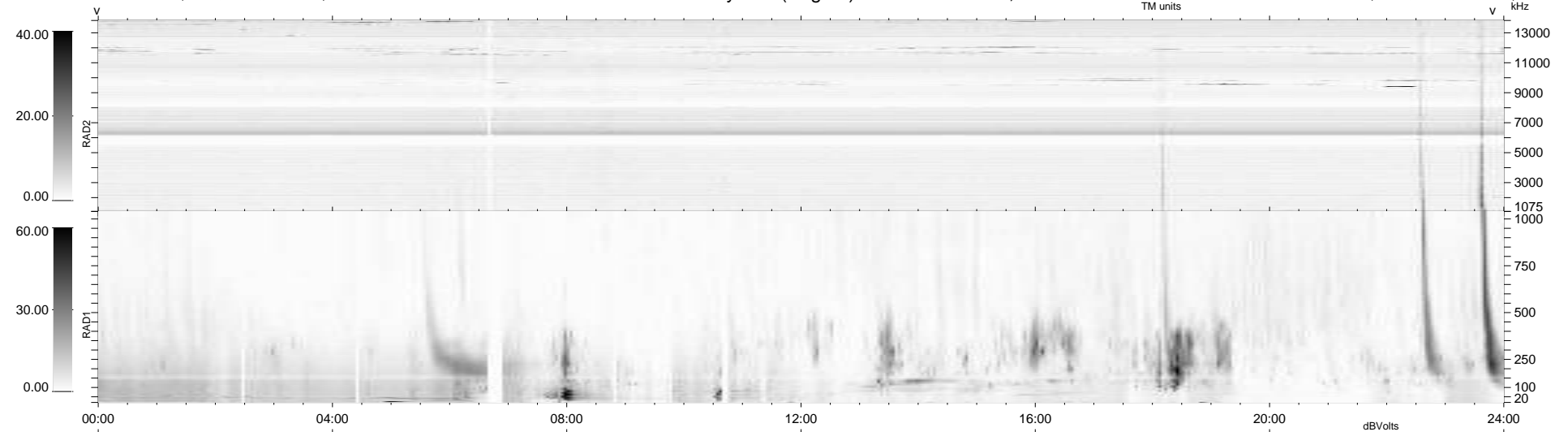
29 bad + 910 good MF/939MF projected (96%) - 0 missing MFs  
 Avg interval = 180 secs  
 Re = 249.03 (229.25, -96.60, 11.28 GSE)

windlib 2.0b

LZ version = v01

### WIND/WAVES Summary Plot (Page 1) for 07-NOV-2015, DOY = 311

DAILY 2015-11-08 01:52:07  
 Re = 248.23 (228.06, -97.39, 10.88 GSE)



```

RAD2
Antenna Ey .....
Mode LIN(1) .....
SUM/SEP SEP .....
Toggle OFF .....

RAD1
Antenna Ex .....
Mode LIS(2,4) .....
SUM/SEP SUM .....
Toggle OFF .....

TNR
Antenna ExEy .....
Mode A-32 .....
Sweep ACE .....
  
```