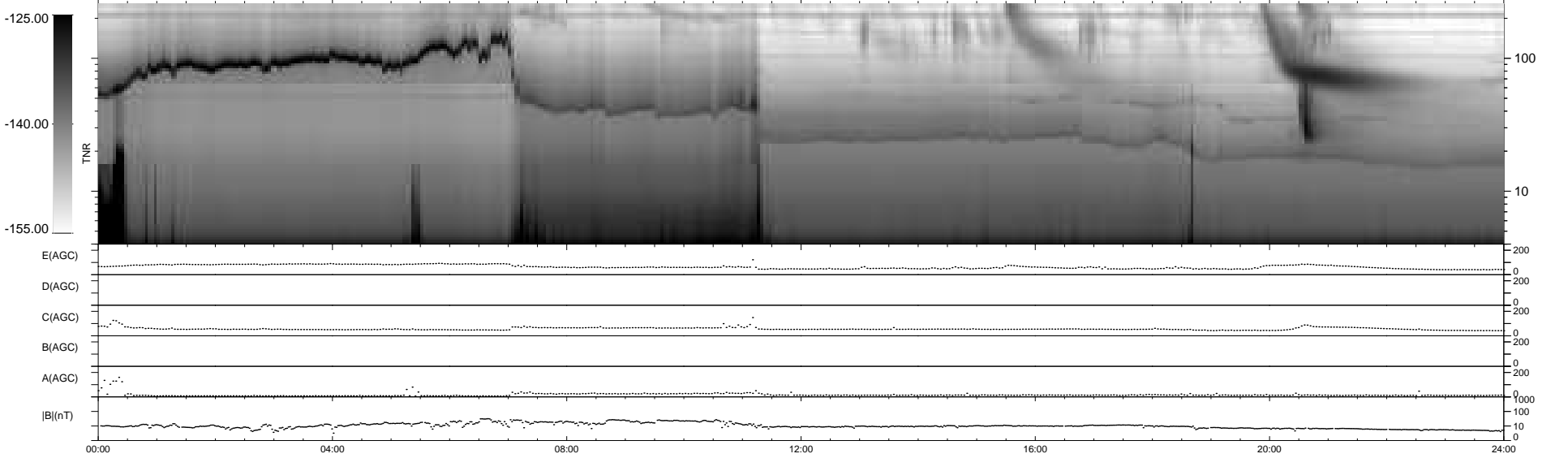
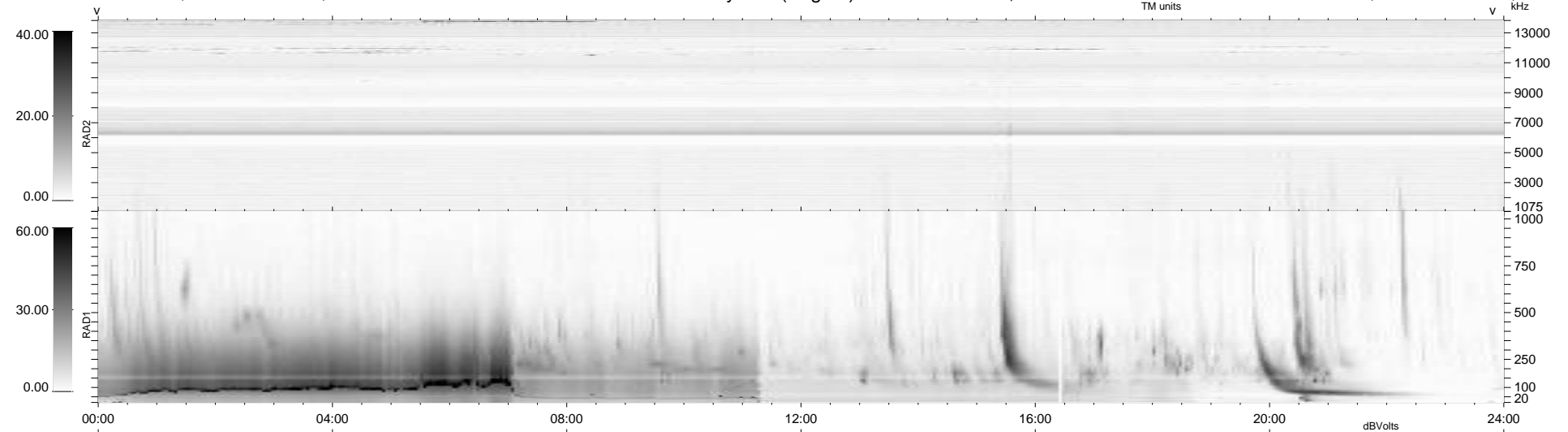


8 bad + 931 good MF/939MF projected (99%) - 0 missing MFs
 Avg interval = 180 secs
 Re = -251.66 (233.91, -91.98, 12.77 GSE)

windlib 2.0b LZ version = v02
 DAILY 2015-11-06 22:53:18
 Re = 251.09 (232.76, -93.34, 12.41 GSE)

WIND/WAVES Summary Plot (Page 1) for 03-NOV-2015, DOY = 307



RAD2
 Antenna Ey
 Mode LIN(1)
 SUM/SEP SEP
 Toggle OFF
 RAD1
 Antenna Ex
 Mode LIS(2,4)
 SUM/SEP SUM
 Toggle OFF
 TNR
 Antenna ExEy
 Mode A-32
 Sweep ACE