

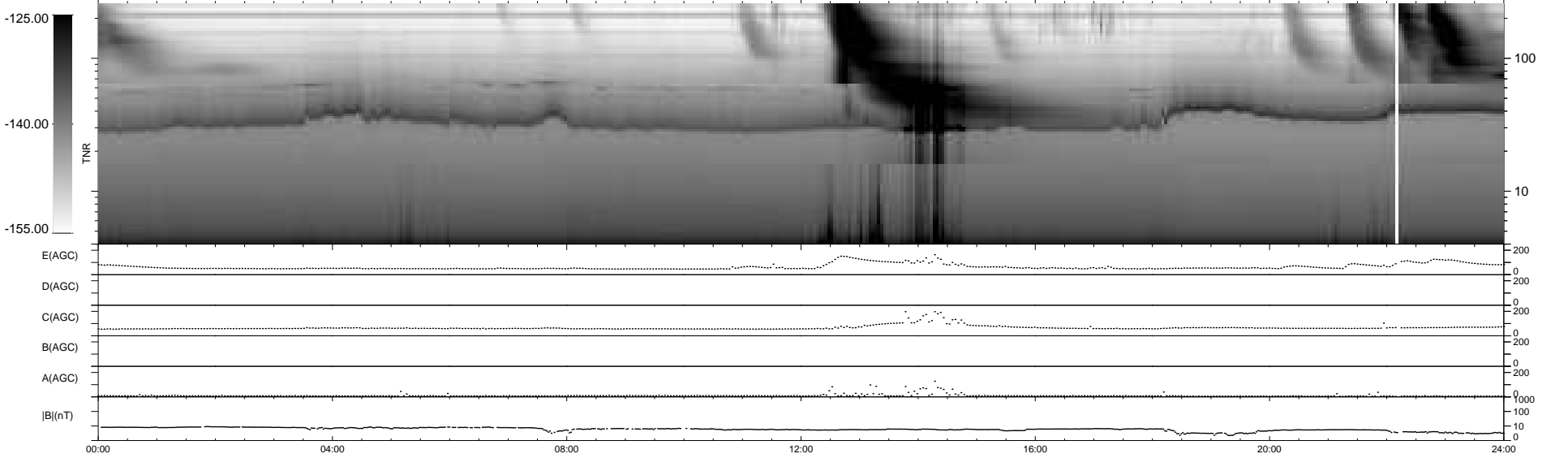
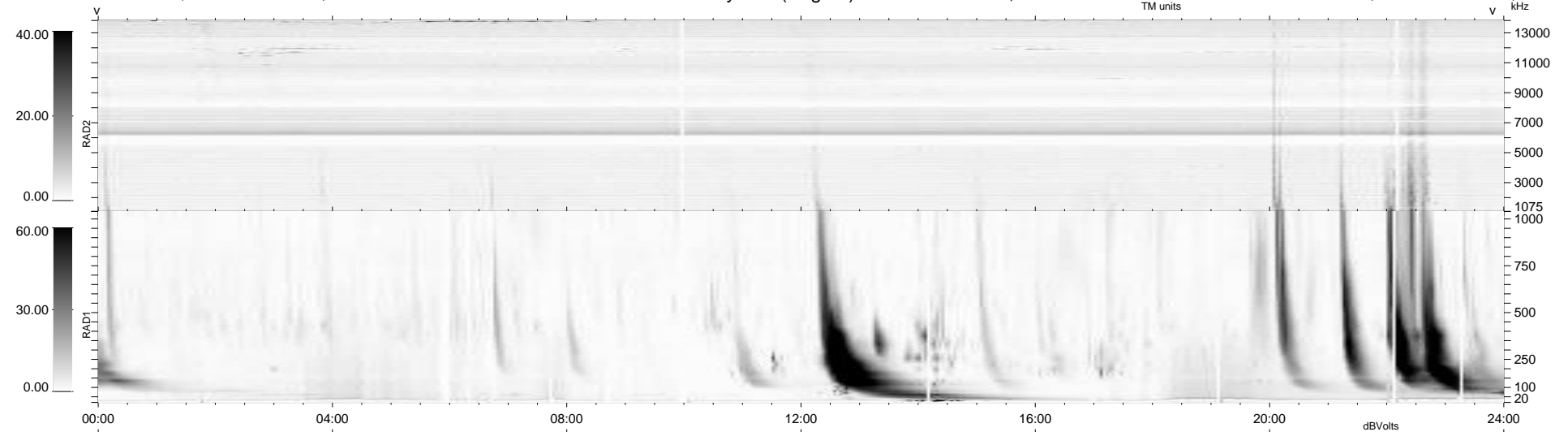
39 bad + 900 good MF/939MF projected (95%) - 0 missing MFs
 Avg interval = 180 secs
 Re = 252.71 (236.20, -88.82, 13.45 GSE)

windlib 2.0b

LZ version = v01

WIND/WAVES Summary Plot (Page 1) for 01-NOV-2015, DOY = 305

DAILY 2015-11-02 05:52:08
 Re = 252.21 (235.06, -90.46, 13.12 GSE)



RAD2
 Antenna Ey
 Mode LIN(1)
 SUM/SEP SEP
 Toggle OFF

RAD1
 Antenna Ex
 Mode LIS(2,4)
 SUM/SEP SUM
 Toggle OFF

TNR
 Antenna ExEy
 Mode A-32
 Sweep ACE