

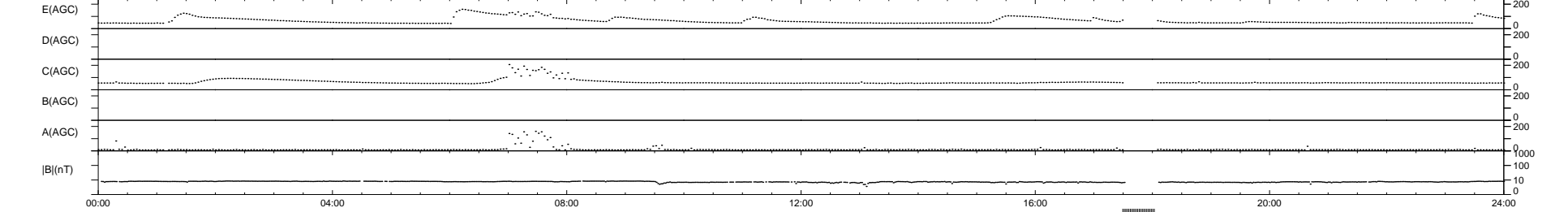
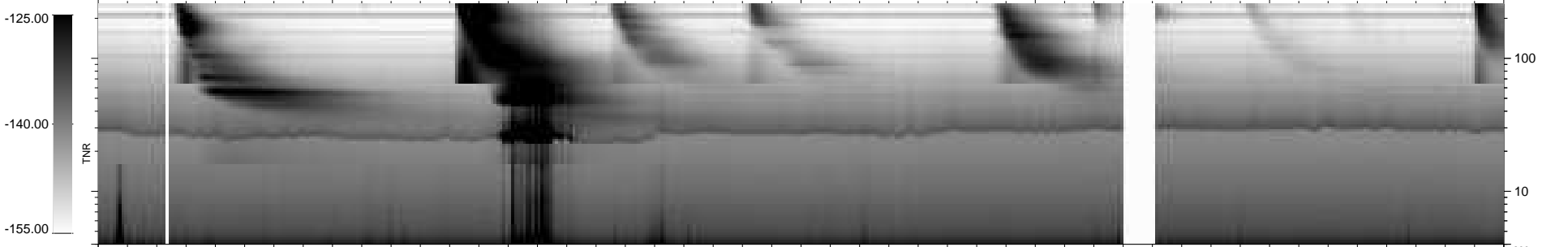
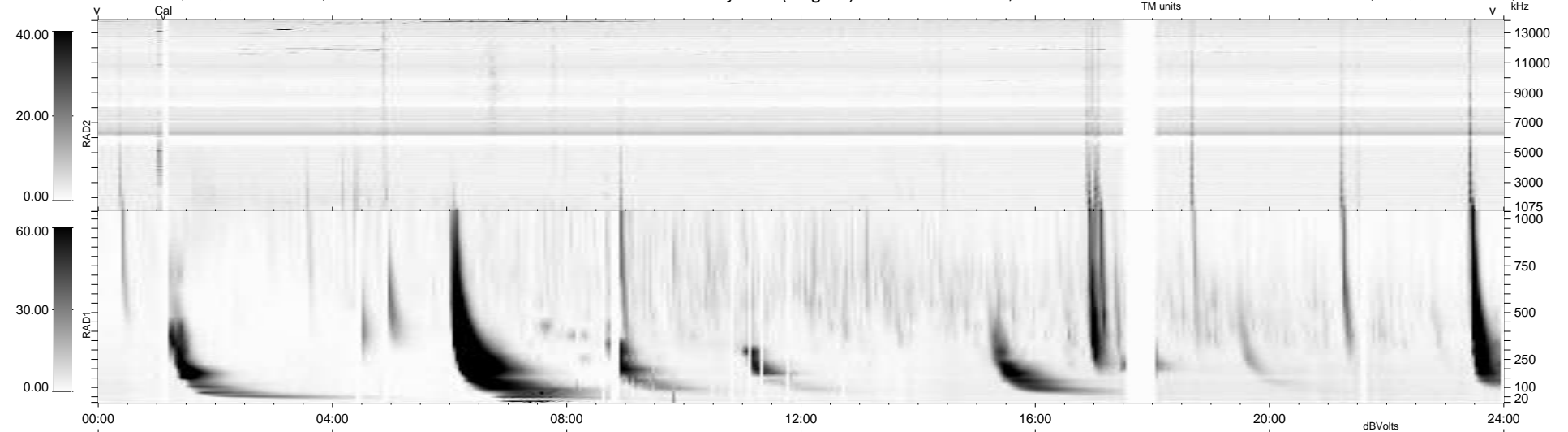
28 bad + 889 good MF/939MF projected (94%) - 22 missing MFs  
 Avg interval = 180 secs  
 Re = 253.18 (237.36, -87.03, 13.77 GSE)

windlib 2.0b

LZ version = v01

### WIND/WAVES Summary Plot (Page 1) for 31-OCT-2015, DOY = 304

DAILY 2015-11-01 20:52:04  
 Re = 252.71 (236.21, -88.81, 13.45 GSE)



```

RAD2
Antenna Ey .....
Mode LIN(1) .....
SUM/SEP SEP .....
Toggle OFF .....

RAD1
Antenna Ex .....
Mode LIS(2,4) .....
SUM/SEP SUM .....
Toggle OFF .....

TNR
Antenna ExEy .....
Mode A-32 .....
Sweep ACE .....
  
```