

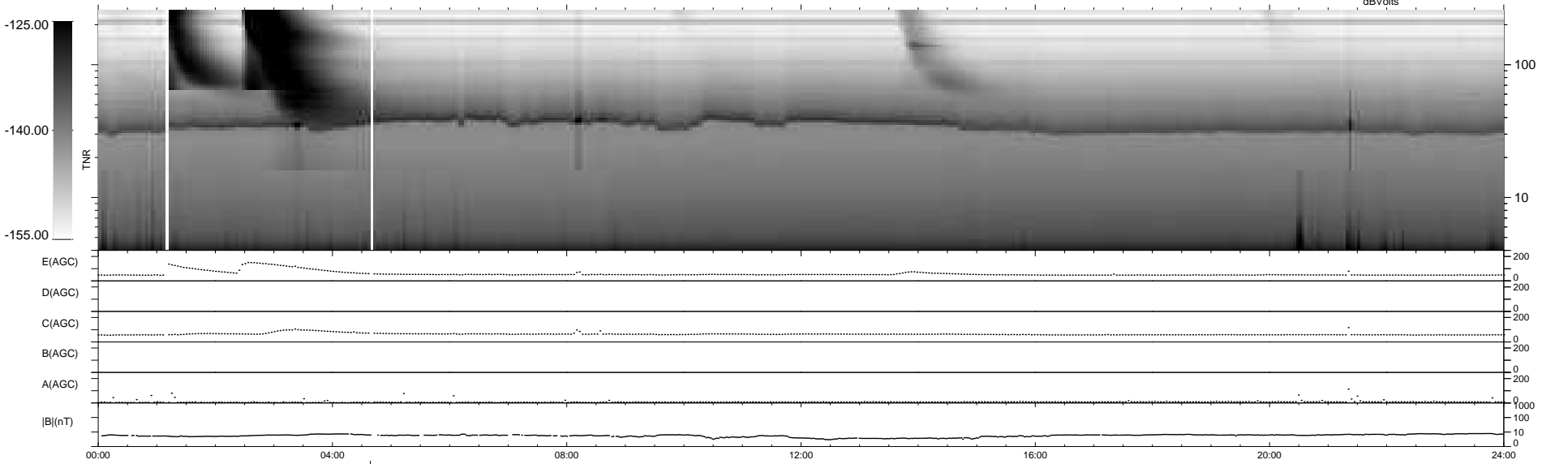
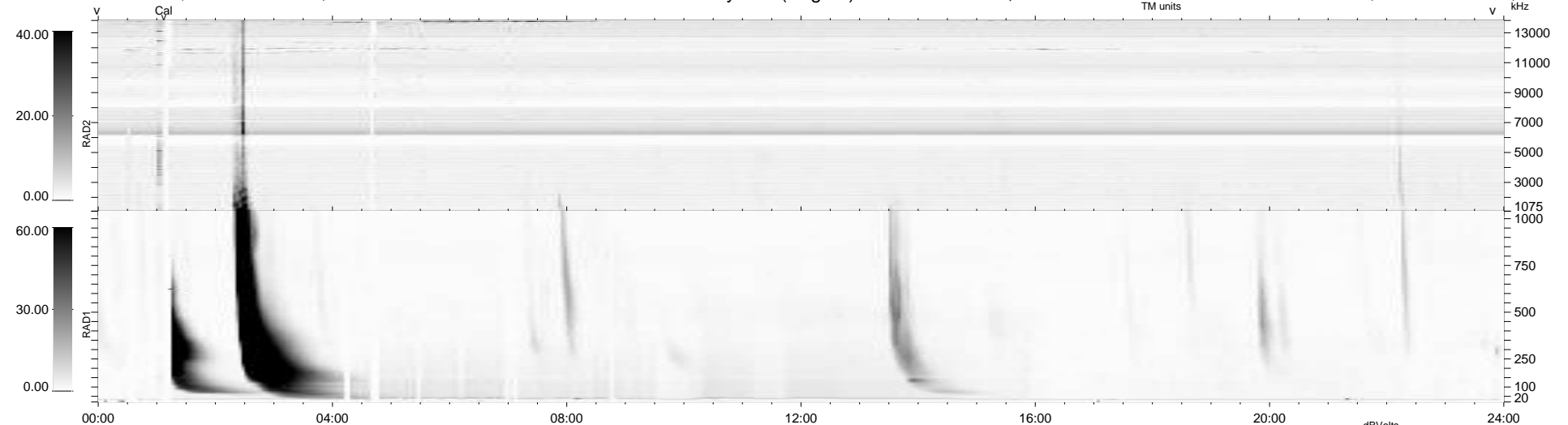
29 bad + 909 good MF/939MF projected (96%) - 1 missing MF
 Avg interval = 180 secs
 Re = 254.09 (239.70, -83.08, 14.39 GSE)

windlib 2.0b

LZ version = v01

WIND/WAVES Summary Plot (Page 1) for 29-OCT-2015, DOY = 302

DAILY 2015-10-30 21:52:07
 Re = 253.65 (238.53, -85.10, 14.09 GSE)



RAD2 Antenna Ey
 Mode LIN(1)
 SUM/SEP SEP
 Toggle OFF
 RAD1 Antenna Ex
 Mode LIS(2,4)
 SUM/SEP SUM
 Toggle OFF
 TNR Antenna ExEy
 Mode A-32
 Sweep ACE