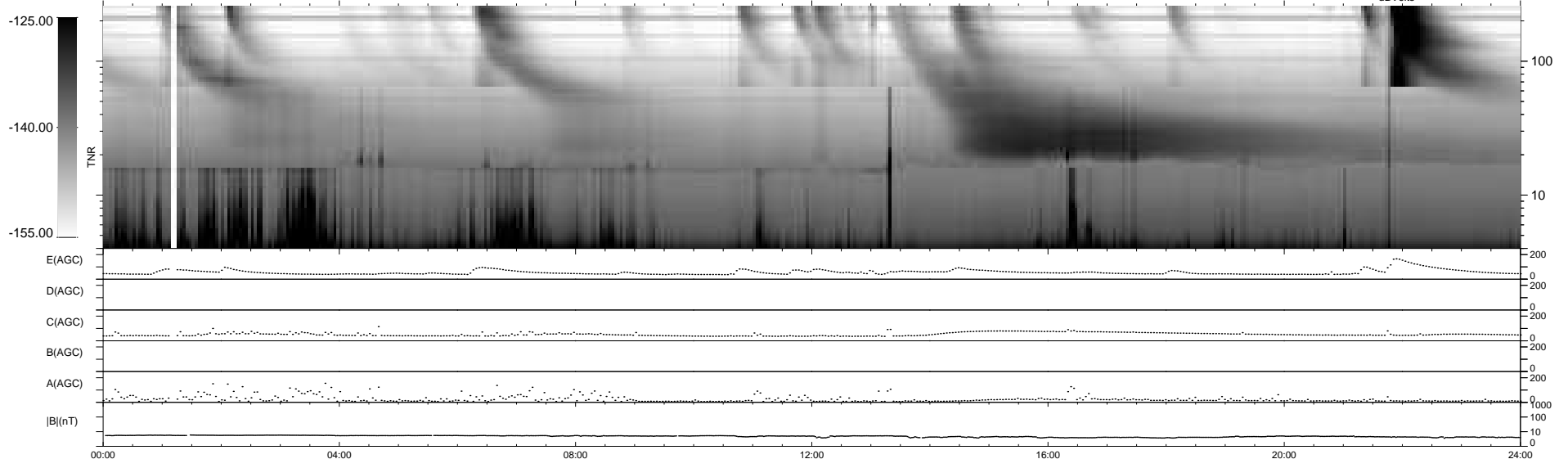
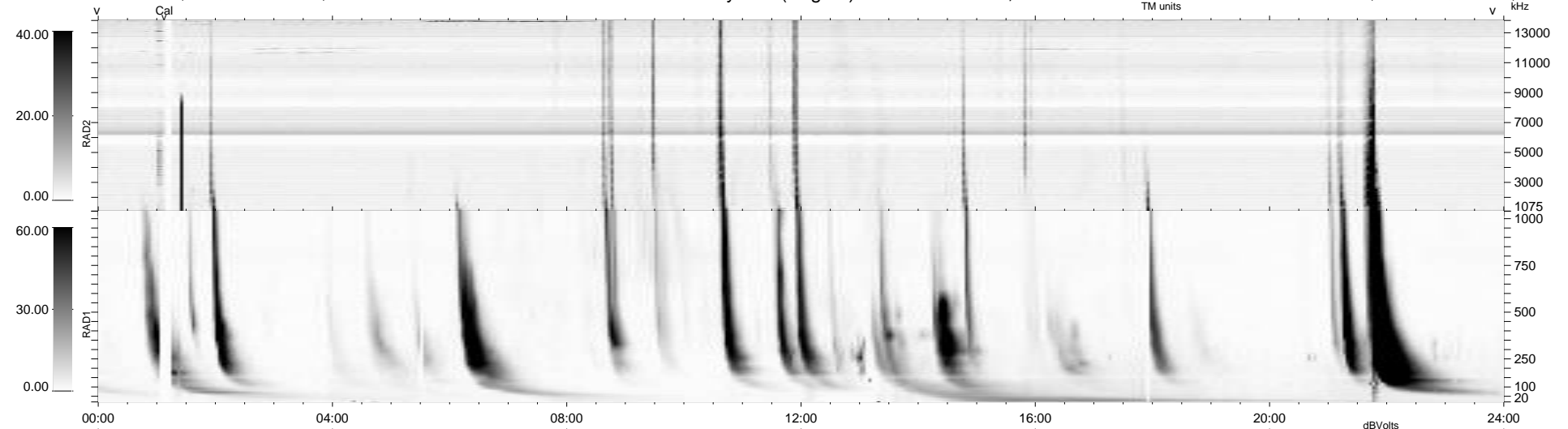


6 bad + 934 good MF/940MF projected (99%) - 0 missing MFs  
 Avg interval = 180 secs  
 Re = -255.01 (242.11, -78.67, 14.96 GSE)

windlib 2.0b LZ version = v01  
 DAILY 2015-10-28 17:52:06  
 Re = 254.55 (240.90, -80.91, 14.69 GSE)

### WIND/WAVES Summary Plot (Page 1) for 27-OCT-2015, DOY = 300



```

RAD2
Antenna Ey .....
Mode LIN(1) .....
SUM/SEP SEP .....
Toggle OFF .....

RAD1
Antenna Ex .....
Mode LIS(2,4) .....
SUM/SEP SUM .....
Toggle OFF .....

TNR
Antenna ExEy .....
Mode A-32 .....
Sweep ACE .....
  
```