

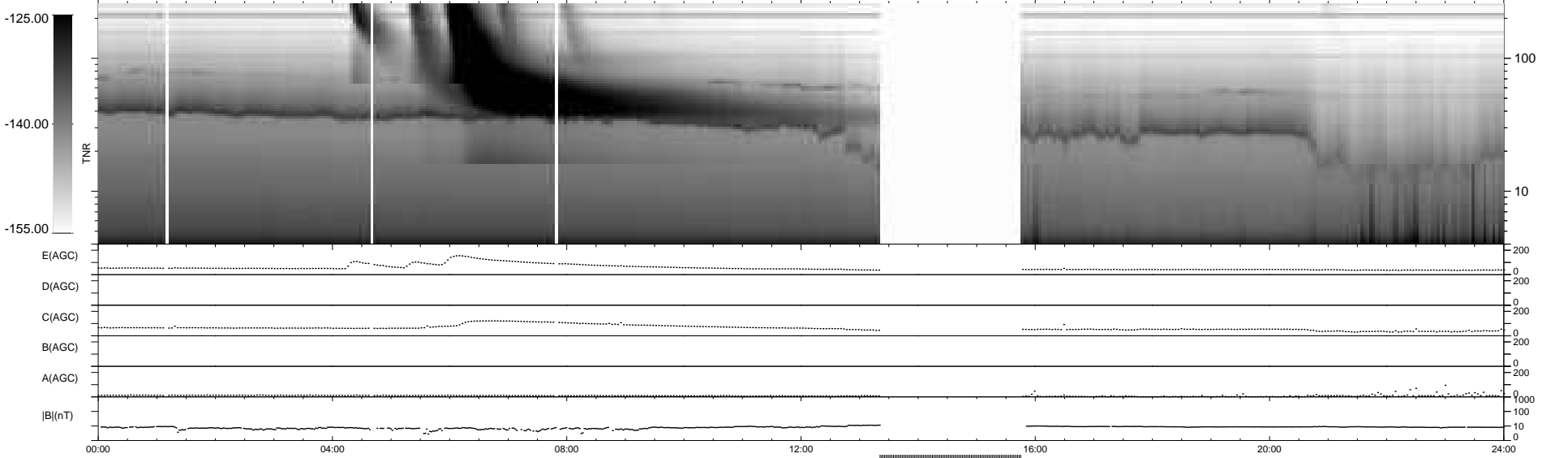
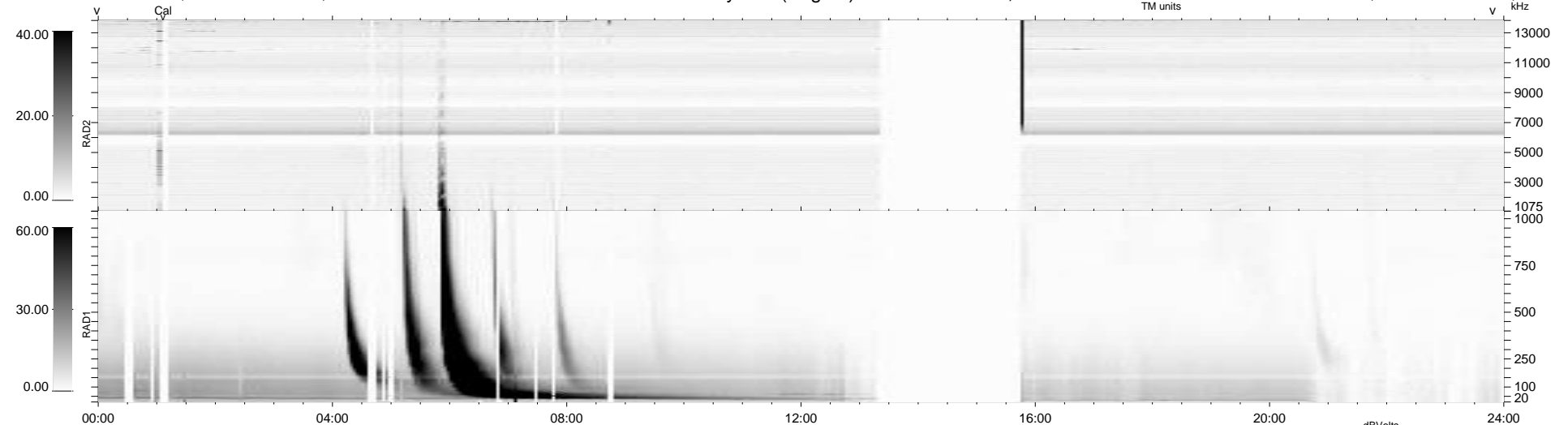
38 bad + 806 good MF/939MF projected (85%) - 95 missing MFs
 Avg interval = 180 secs
 Re = 255.97 (244.57, -73.91, 15.48 GSE)

windlib 2.0b

LZ version = v02

WIND/WAVES Summary Plot (Page 1) for 25-OCT-2015, DOY = 298

DAILY 2015-10-28 10:52:06
 Re = 255.48 (243.34, -76.31, 15.23 GSE)



RAD2
 Antenna Ey
 Mode LIN(1)
 SUM/SEP SEP
 Toggle OFF

RAD1
 Antenna Ex
 Mode LIS(2,4)
 SUM/SEP SUM
 Toggle OFF

TNR
 Antenna ExEy
 Mode A-32
 Sweep ACE