

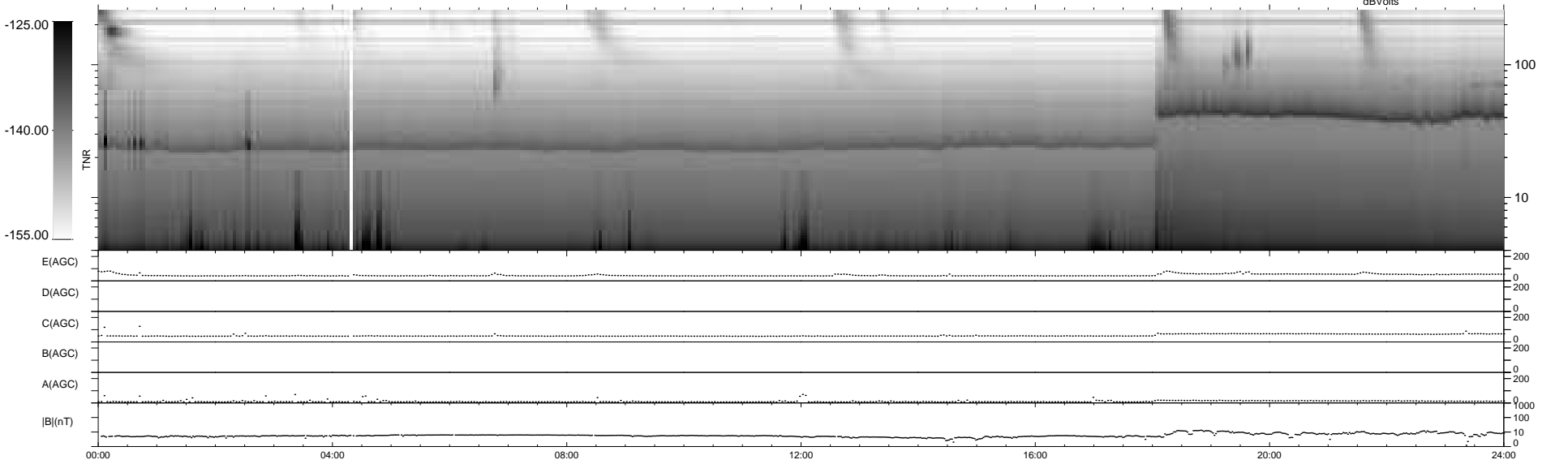
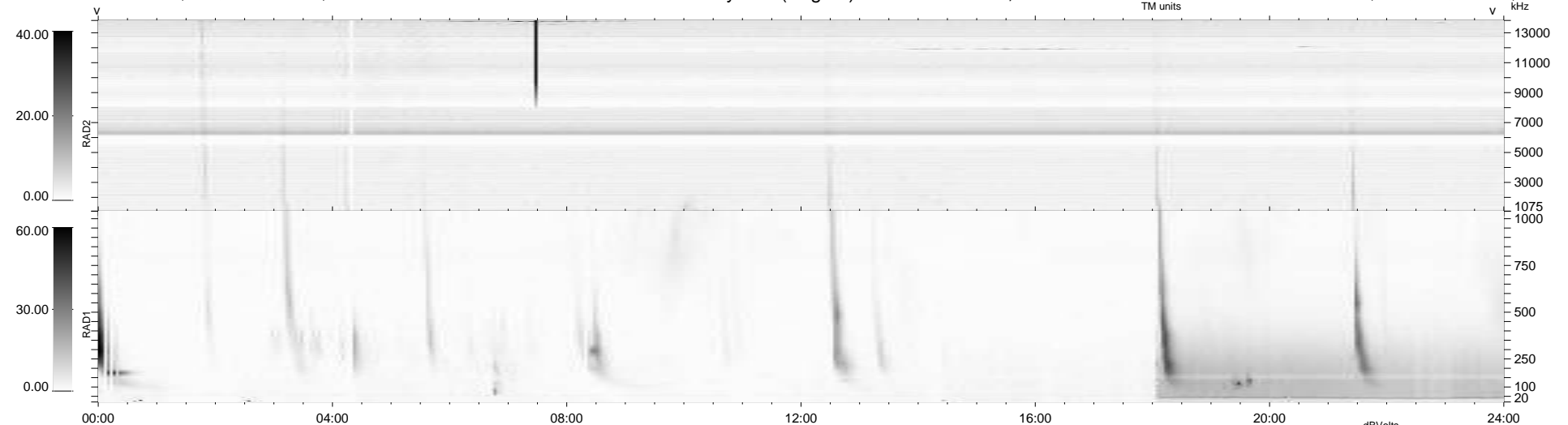
20 bad + 919 good MF/939MF projected (97%) - 0 missing MFs
 Avg interval = 180 secs
 Re = -256.46 (245.82, -71.42, 15.72 GSE)

windlib 2.0b

LZ version = v02

WIND/WAVES Summary Plot (Page 1) for 24-OCT-2015, DOY = 297

DAILY 2015-10-26 15:52:07
 Re = 255.97 (244.58, -73.89, 15.49 GSE)



E(AGC) 0 200
 D(AGC) 0 200
 C(AGC) 0 200
 B(AGC) 0 200
 A(AGC) 0 200
 |B|(nT) 0 1000
 0 100
 0

00:00 04:00 08:00 12:00 16:00 20:00 24:00

RAD2
 Antenna Ey
 Mode LIN(1)
 SUM/SEP SEP
 Toggle OFF

RAD1
 Antenna Ex
 Mode LIS(2,4)
 SUM/SEP SUM
 Toggle OFF

TNR
 Antenna ExEy
 Mode A-32
 Sweep ACE