

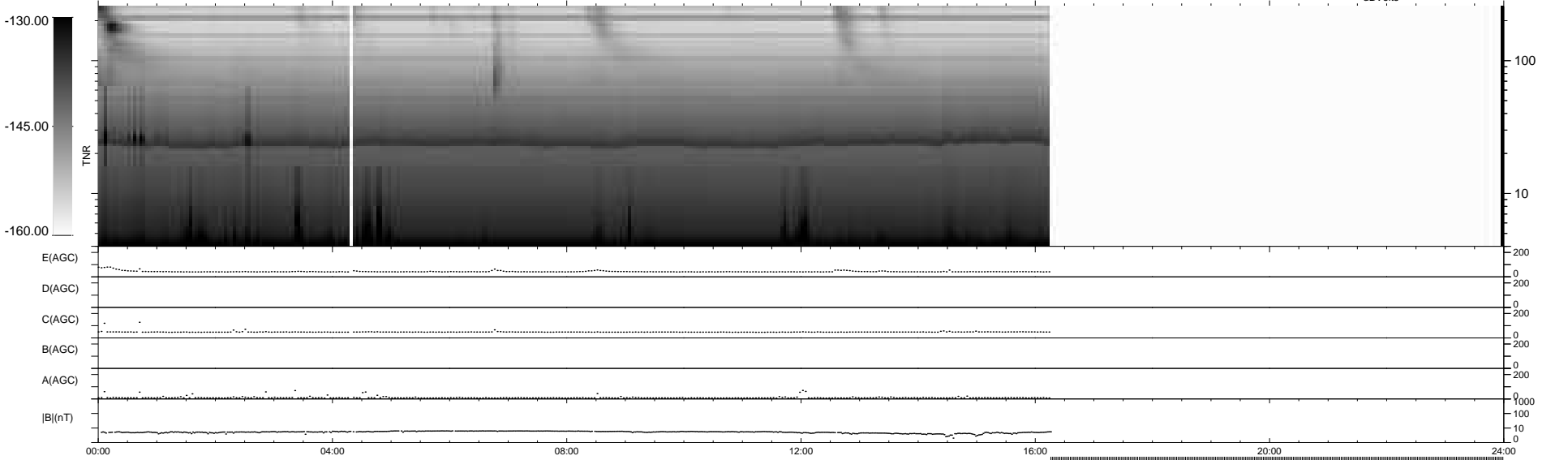
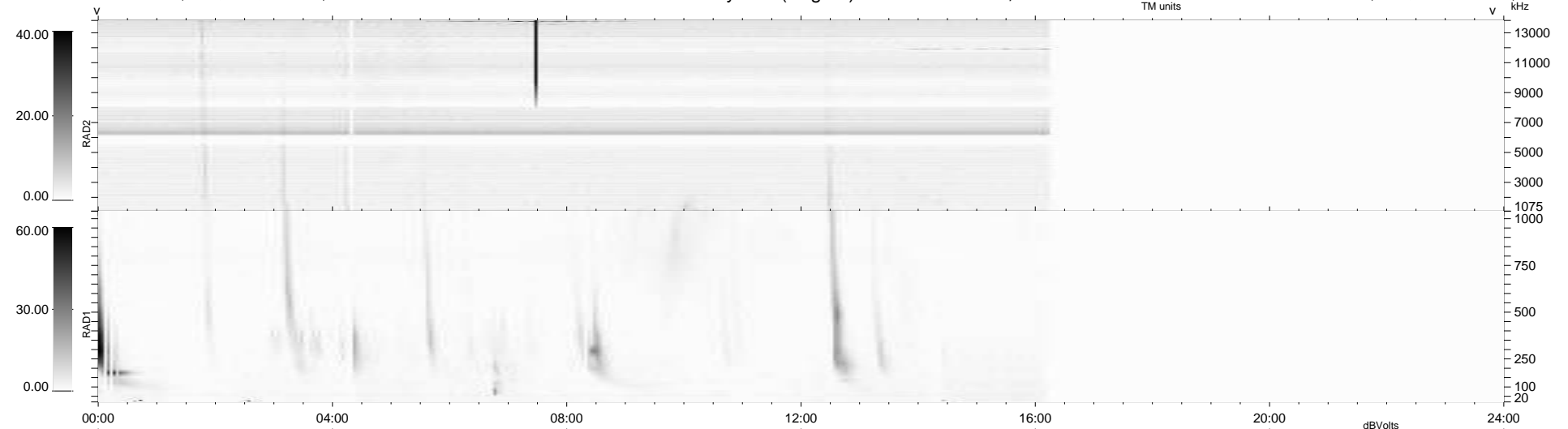
20 bad + 616 good MF/939MF projected (65%) - 303 missing MFs
 Avg interval = 180 secs
 Re = -256.46 (245.82, -71.42, 15.72 GSE)

windlib 2.0b

LZ version = v01

WIND/WAVES Summary Plot (Page 1) for 24-OCT-2015, DOY = 297

DAILY 2015-10-25 18:52:06
 Re = 255.97 (244.58, -73.89, 15.49 GSE)



```

RAD2
Antenna Ey .....
Mode LIN(1) .....
SUM/SEP SEP .....
Toggle OFF .....

RAD1
Antenna Ex .....
Mode LIS(2,4) .....
SUM/SEP SUM .....
Toggle OFF .....

TNR
Antenna ExEy .....
Mode A-32 .....
Sweep ACE .....
  
```