

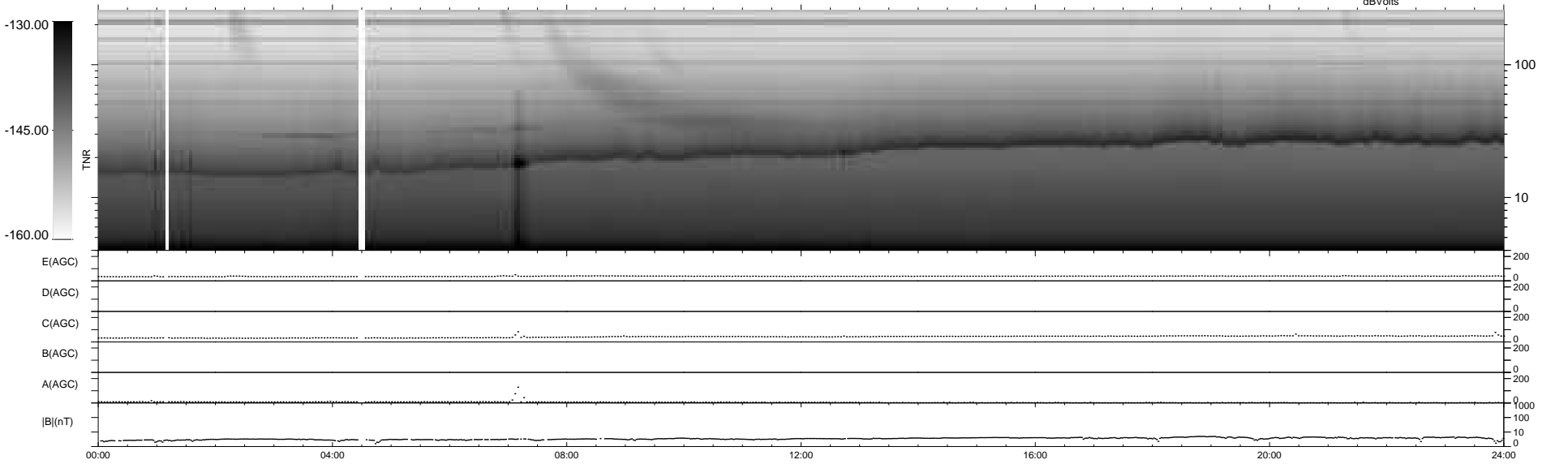
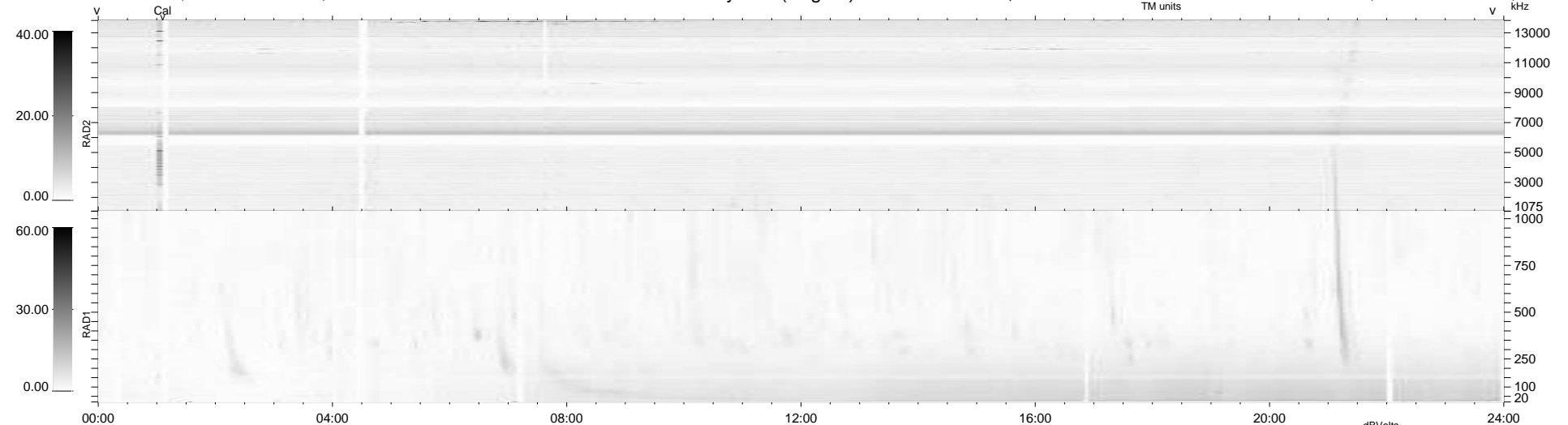
31 bad + 908 good MF/939MF projected (96%) - 0 missing MFs  
 Avg interval = 180 secs  
 Re = 258.96 (251.78, -58.21, 16.63 GSE)

windlib 2.0b

LZ version = v01

### WIND/WAVES Summary Plot (Page 1) for 19-OCT-2015, DOY = 292

DAILY 2015-10-20 22:52:08  
 Re = 258.49 (250.66, -60.92, 16.49 GSE)



```

RAD2
Antenna Ey .....
Mode LIN(1) .....
SUM/SEP SEP .....
Toggle OFF .....

RAD1
Antenna Ex .....
Mode LIS(2,4) .....
SUM/SEP SUM .....
Toggle OFF .....

TNR
Antenna ExEy .....
Mode A-32 .....
Sweep ACE .....
  
```