

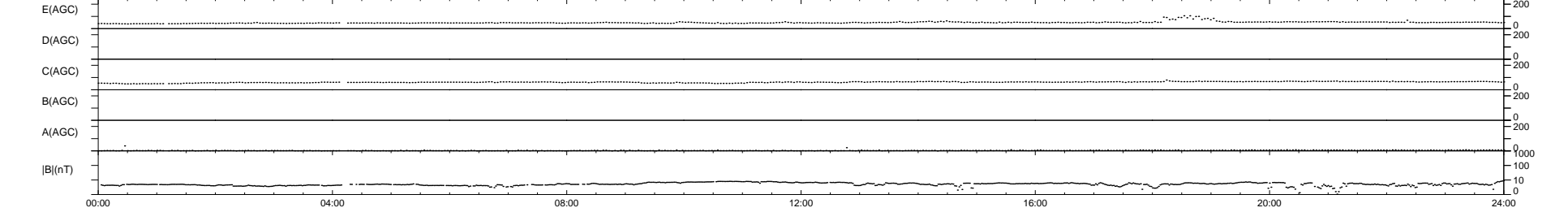
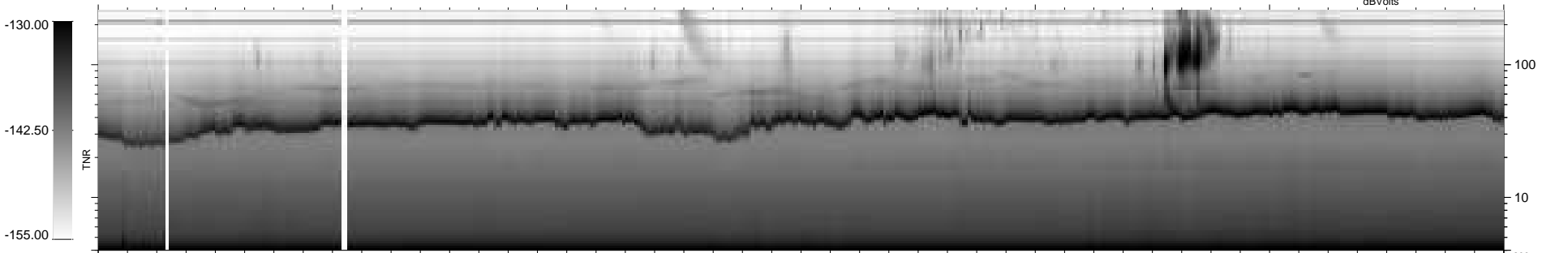
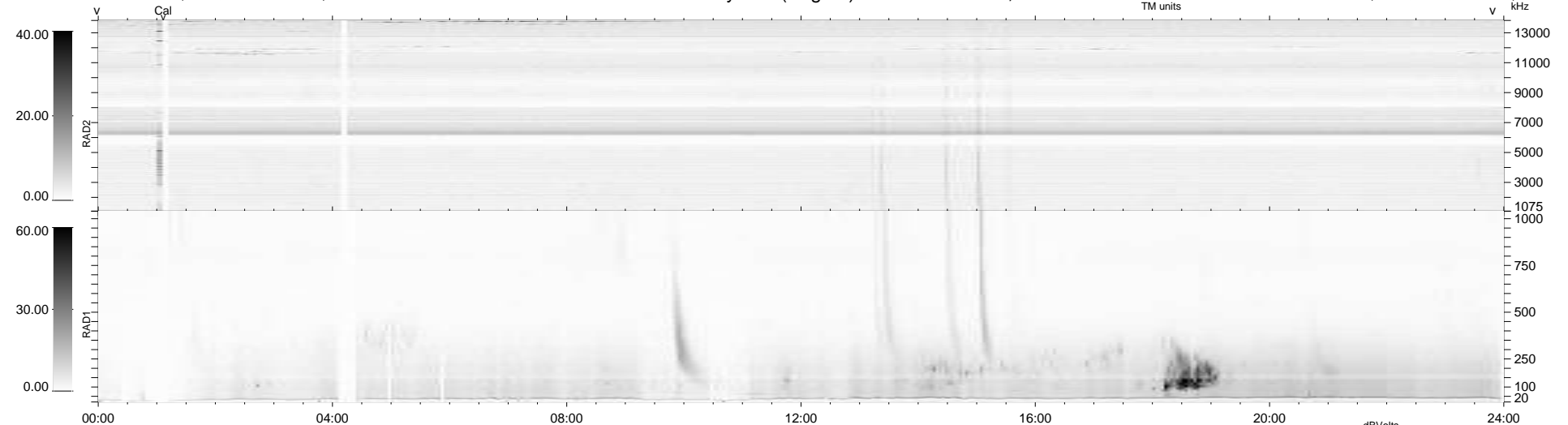
30 bad + 909 good MF/939MF projected (96%) - 0 missing MFs
 Avg interval = 180 secs
 Re = 259.83 (253.88, -52.62, 16.86 GSE)

windlib 2.0b

LZ version = v01

WIND/WAVES Summary Plot (Page 1) for 17-OCT-2015, DOY = 290

DAILY 2015-10-18 18:52:07
 Re = 259.41 (252.87, -55.42, 16.76 GSE)



RAD2 Antenna Ey
 Mode LIN(1)
 SUM/SEP SEP
 Toggle OFF
 RAD1 Antenna Ex
 Mode LIS(2,4)
 SUM/SEP SUM
 Toggle OFF
 TNR Antenna ExEy
 Mode A-32
 Sweep ACE