

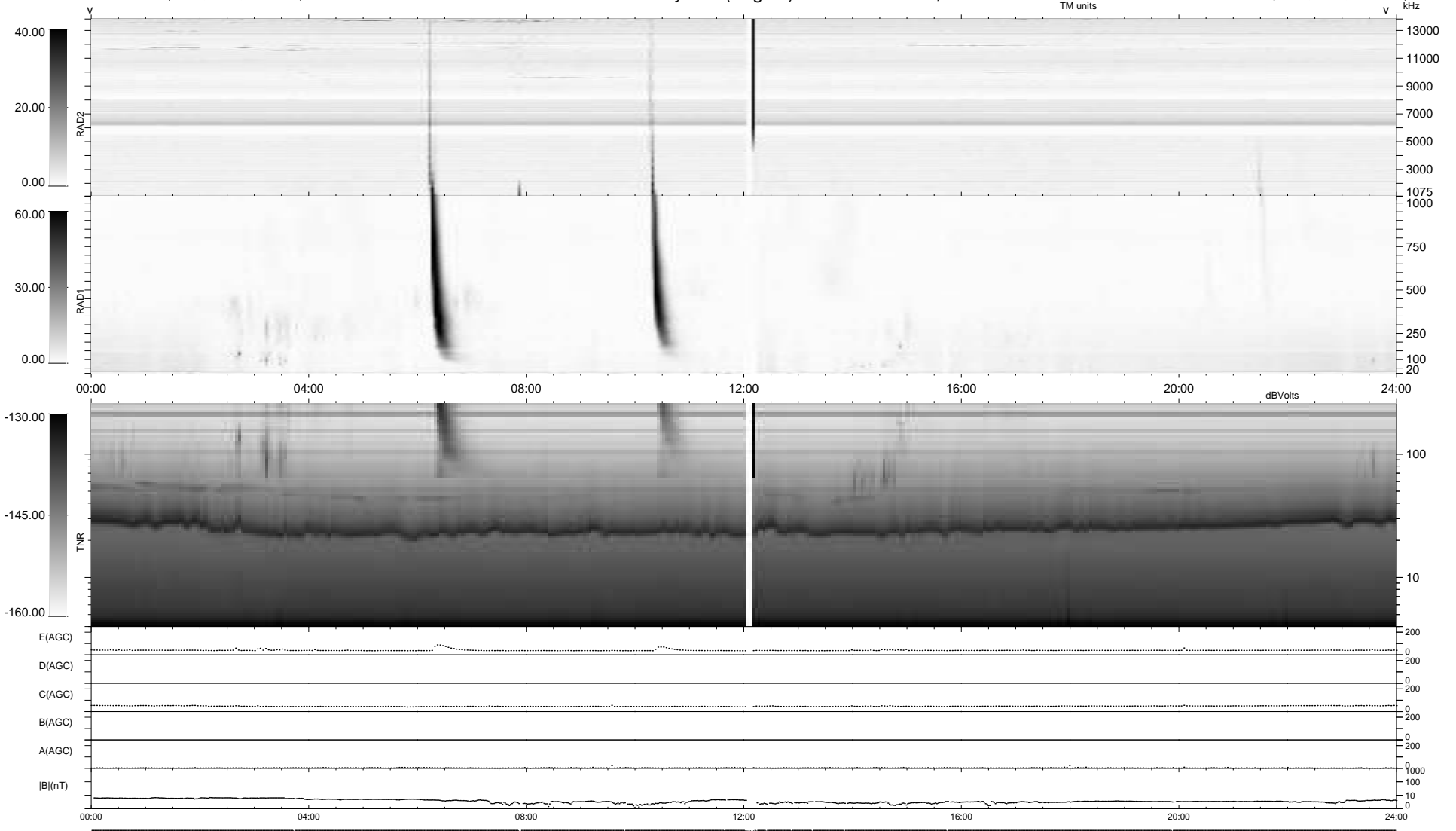
19 bad + 920 good MF/939MF projected (97%) - 0 missing MFs  
 Avg interval = 180 secs  
 Re = 260.21 (254.84, -49.77, 16.95 GSE)

windlib 2.0b

LZ version = v01

### WIND/WAVES Summary Plot (Page 1) for 16-OCT-2015, DOY = 289

DAILY 2015-10-17 18:52:06  
 Re = 259.83 (253.89, -52.60, 16.86 GSE)



```

RAD2
Antenna Ey .....
Mode LIN(1) .....
SUM/SEP SEP .....
Toggle OFF .....

RAD1
Antenna Ex .....
Mode LIS(2,4) .....
SUM/SEP SUM .....
Toggle OFF .....

TNR
Antenna ExEy .....
Mode A-32 .....
Sweep ACE .....
  
```