

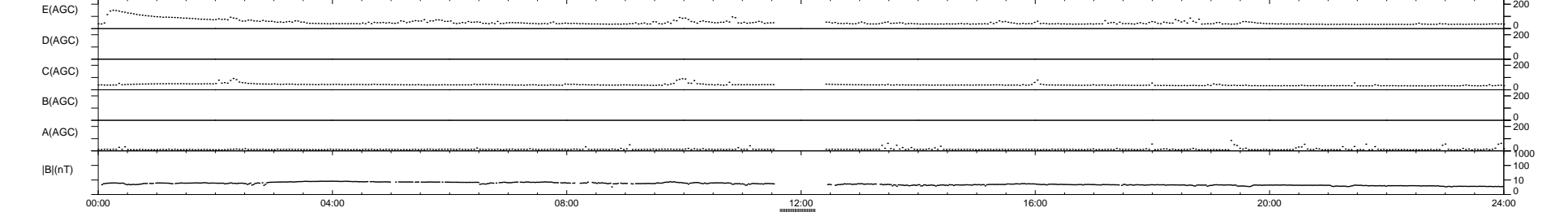
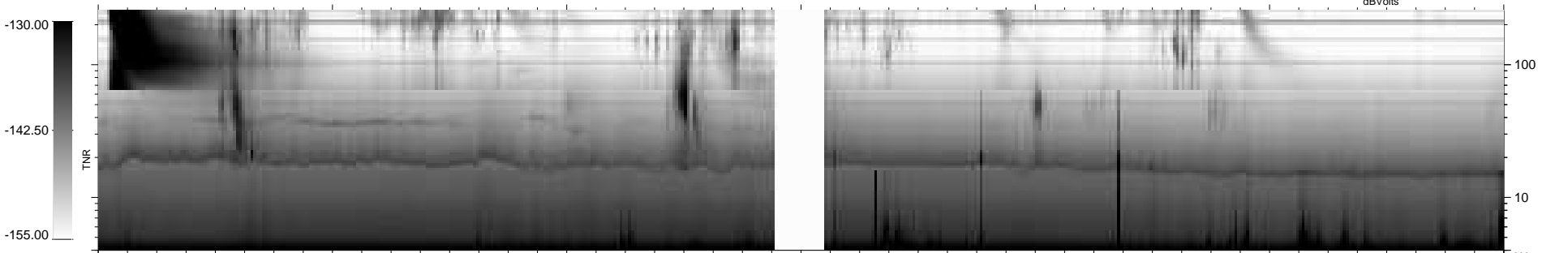
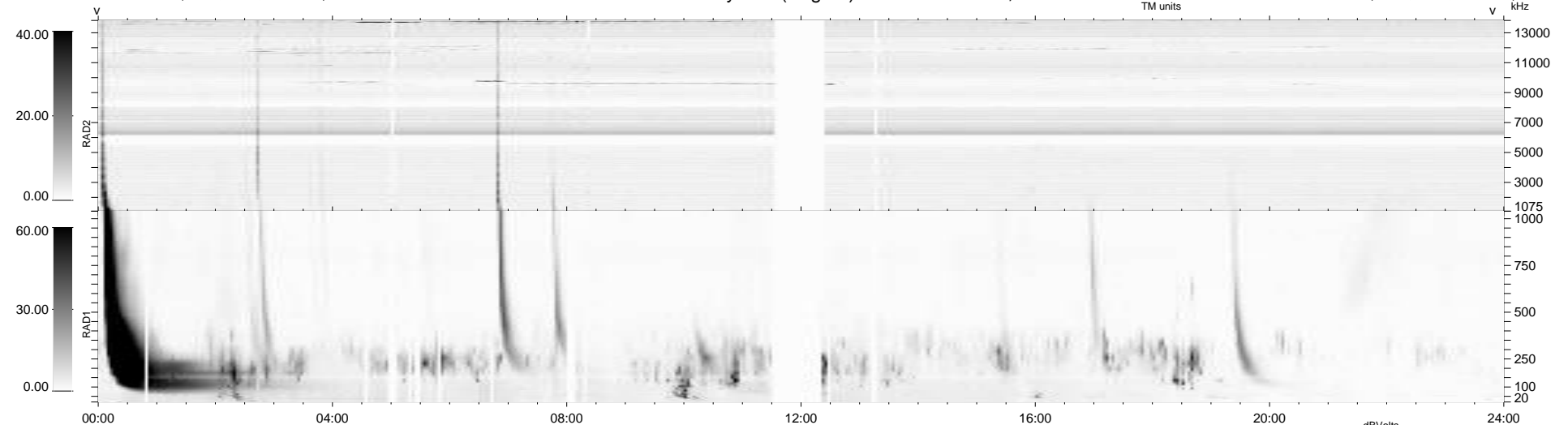
44 bad + 871 good MF/939MF projected (92%) - 24 missing MFs
 Avg interval = 180 secs
 Re = 260.84 (256.55, -43.92, 17.06 GSE)

windlib 2.0b

LZ version = v02

WIND/WAVES Summary Plot (Page 1) for 14-OCT-2015, DOY = 287

DAILY 2015-10-16 11:52:04
 Re = 260.55 (255.74, -46.84, 17.01 GSE)



```

RAD2
Antenna Ey .....
Mode LIN(1) .....
SUM/SEP SEP .....
Toggle OFF .....

RAD1
Antenna Ex .....
Mode LIS(2,4) .....
SUM/SEP SUM .....
Toggle OFF .....

TNR
Antenna ExEy .....
Mode A-32 .....
Sweep ACE .....
  
```