

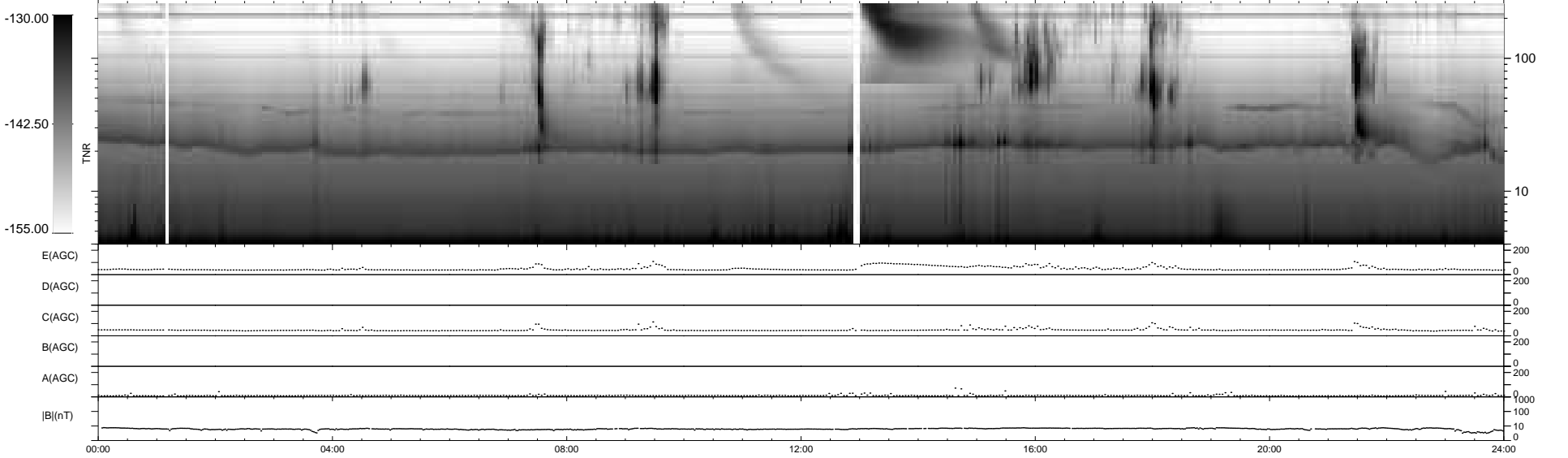
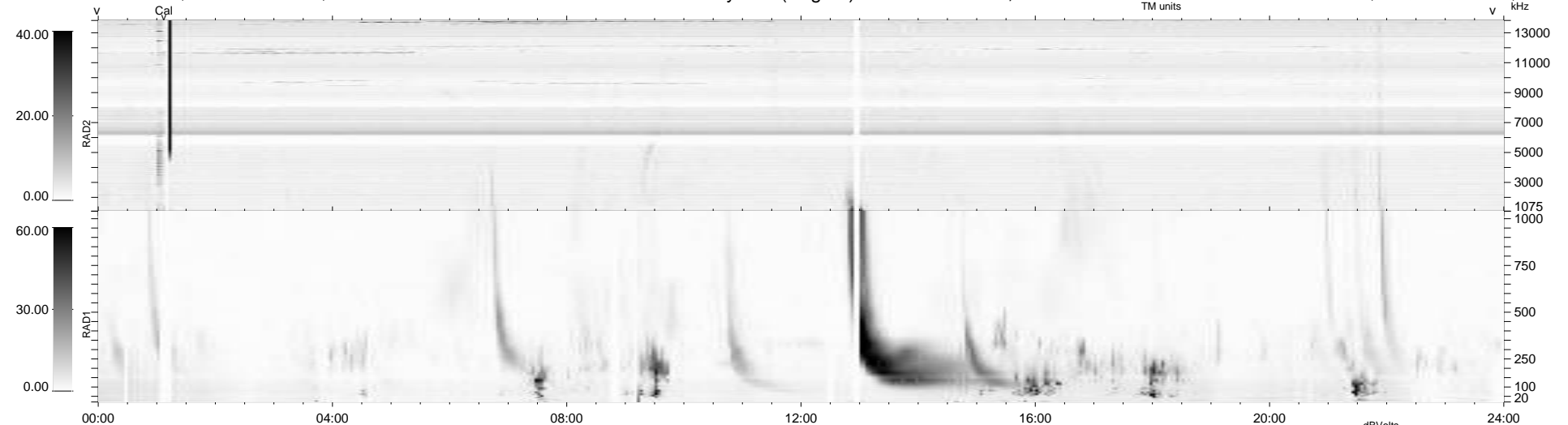
20 bad + 919 good MF/939MF projected (97%) - 0 missing MFs
Avg interval = 180 secs
Re = -261.09 (257.29, -40.92, 17.09 GSE)

windlib 2.0b

LZ version = v01

WIND/WAVES Summary Plot (Page 1) for 13-OCT-2015, DOY = 286

DAILY 2015-10-15 11:52:59
Re = 260.84 (256.56, -43.90, 17.06 GSE)



RAD2
Antenna Ey
Mode LIN(1)
SUM/SEP SEP
Toggle OFF

RAD1
Antenna Ex
Mode LIS(2,4)
SUM/SEP SUM
Toggle OFF

TNR
Antenna ExEy
Mode A-32
Sweep ACE