

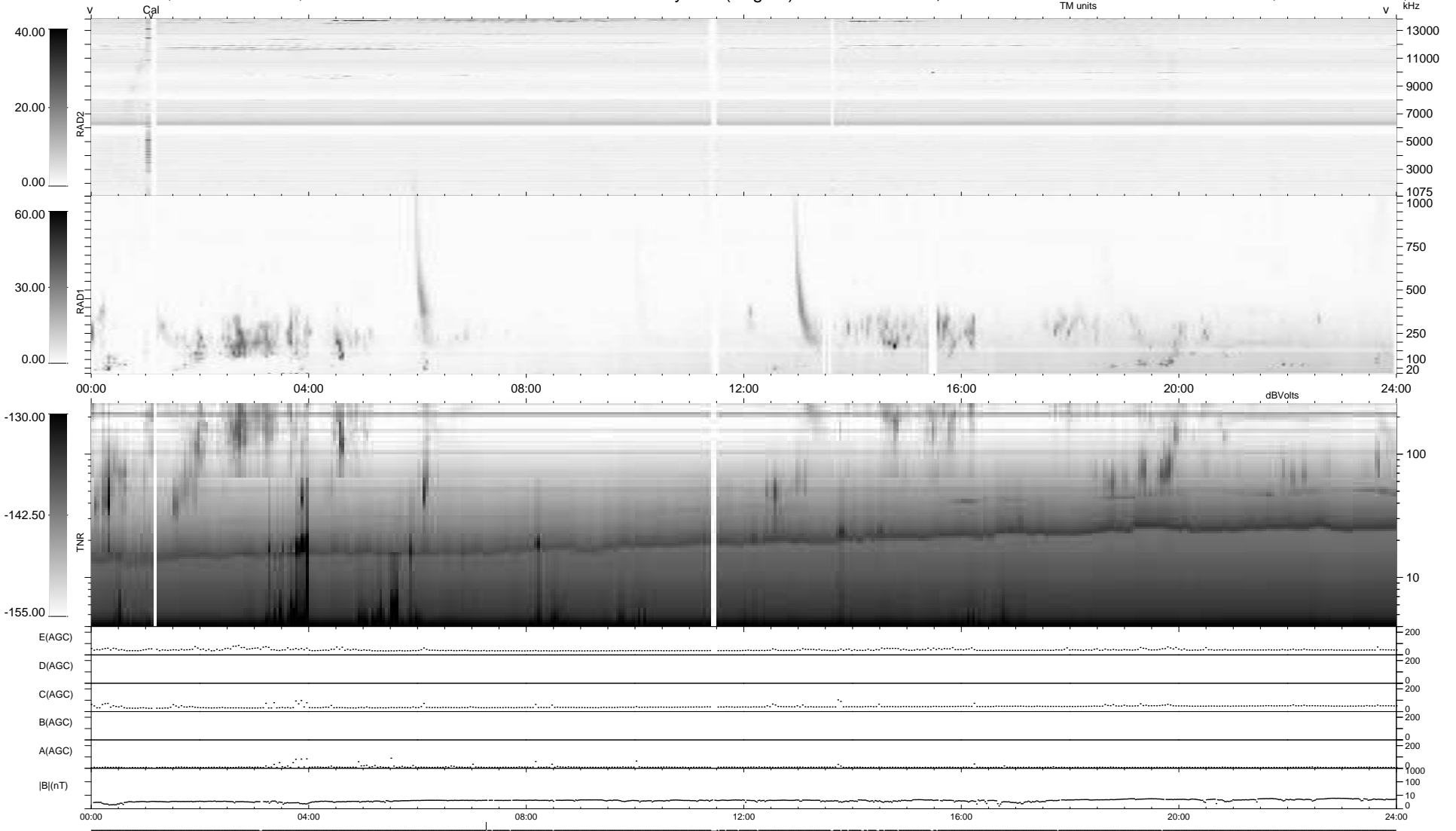
29 bad + 909 good MF/939MF projected (96%) - 1 missing MF
 Avg interval = 180 secs
 Re = 261.44 (258.55, -34.79, 17.10 GSE)

windlib 2.0b

LZ version = v01

WIND/WAVES Summary Plot (Page 1) for 11-OCT-2015, DOY = 284

DAILY 2015-10-13 02:52:04
 Re = 261.29 (257.97, -37.86, 17.10 GSE)



RAD2
 Antenna Ey
 Mode LIN(1)
 SUM/SEP SEP
 Toggle OFF

RAD1
 Antenna Ex
 Mode LIS(2,4)
 SUM/SEP SUM
 Toggle OFF

TNR
 Antenna ExEy
 Mode A-32
 Sweep ACE