

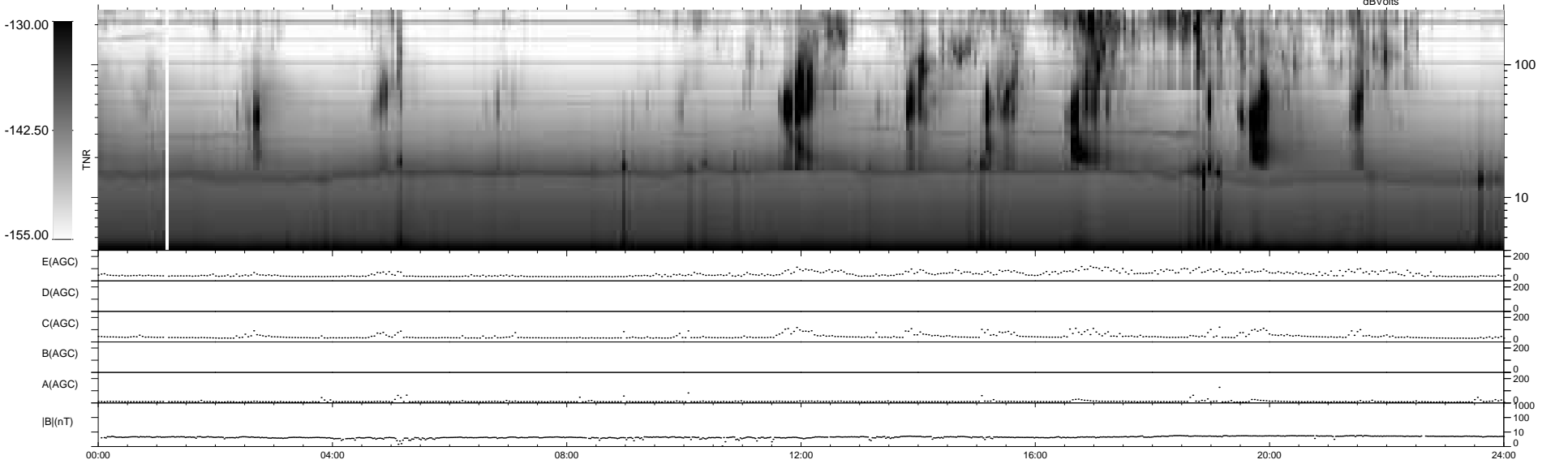
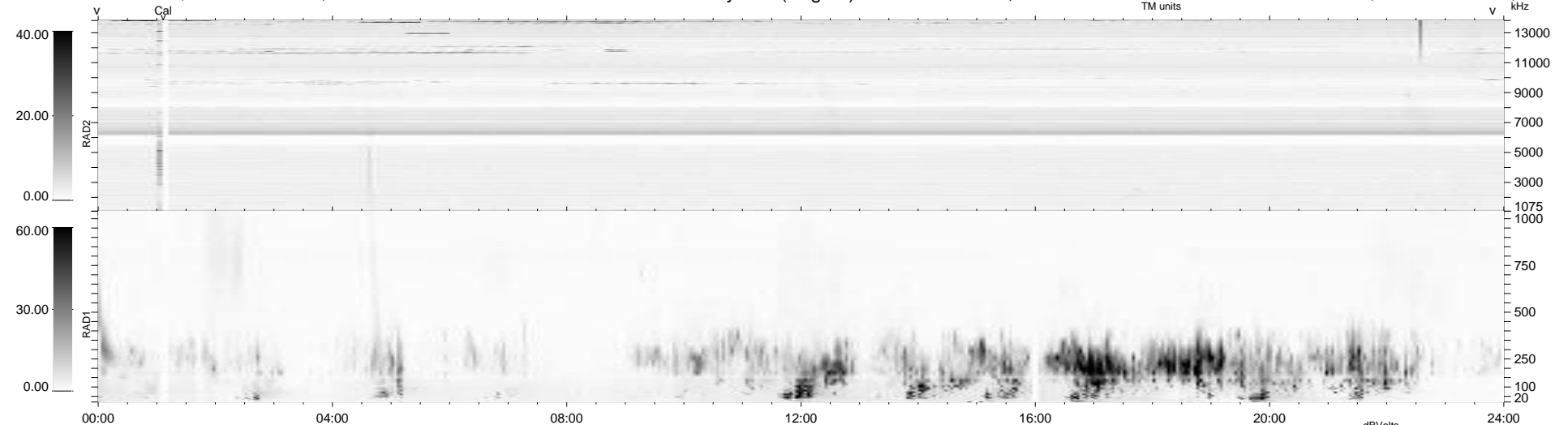
7 bad + 932 good MF/939MF projected (99%) - 0 missing MFs
Avg interval = 180 secs
Re = -261.62 (259.51, -28.44, 17.04 GSE)

windlib 2.0b

LZ version = v01

WIND/WAVES Summary Plot (Page 1) for 09-OCT-2015, DOY = 282

DAILY 2015-10-11 01:52:04
Re = 261.55 (259.07, -31.62, 17.08 GSE)



RAD2
Antenna Ey
Mode LIN(1)
SUM/SEP SEP
Toggle OFF
RAD1
Antenna Ex
Mode LIS(2,4)
SUM/SEP SUM
Toggle OFF
TNR
Antenna ExEy
Mode A-32
Sweep ACE