

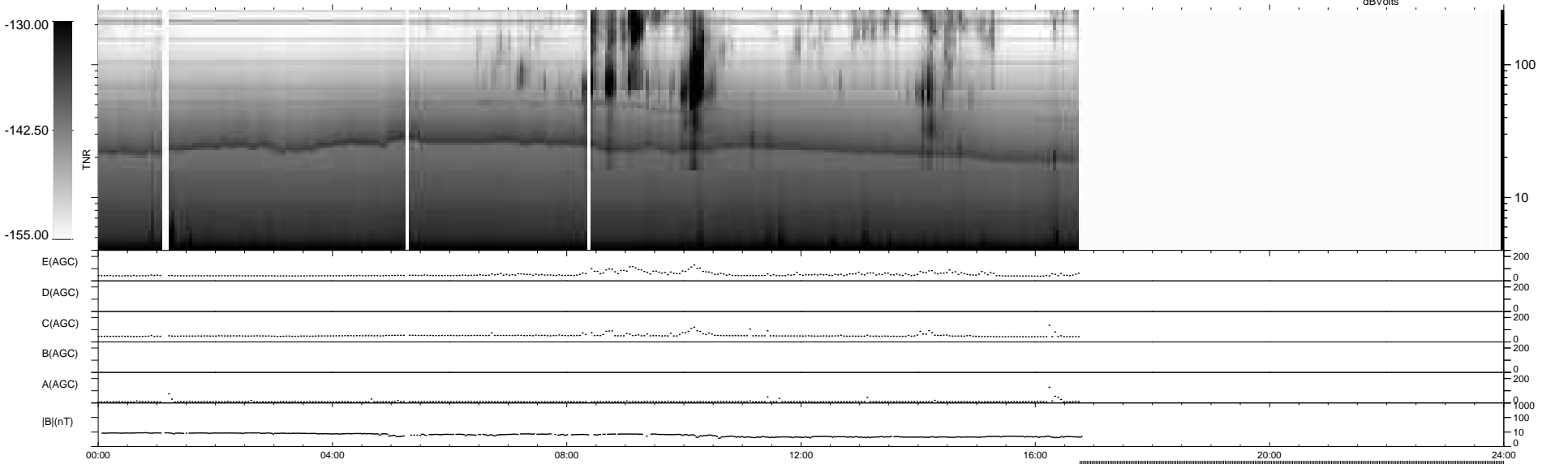
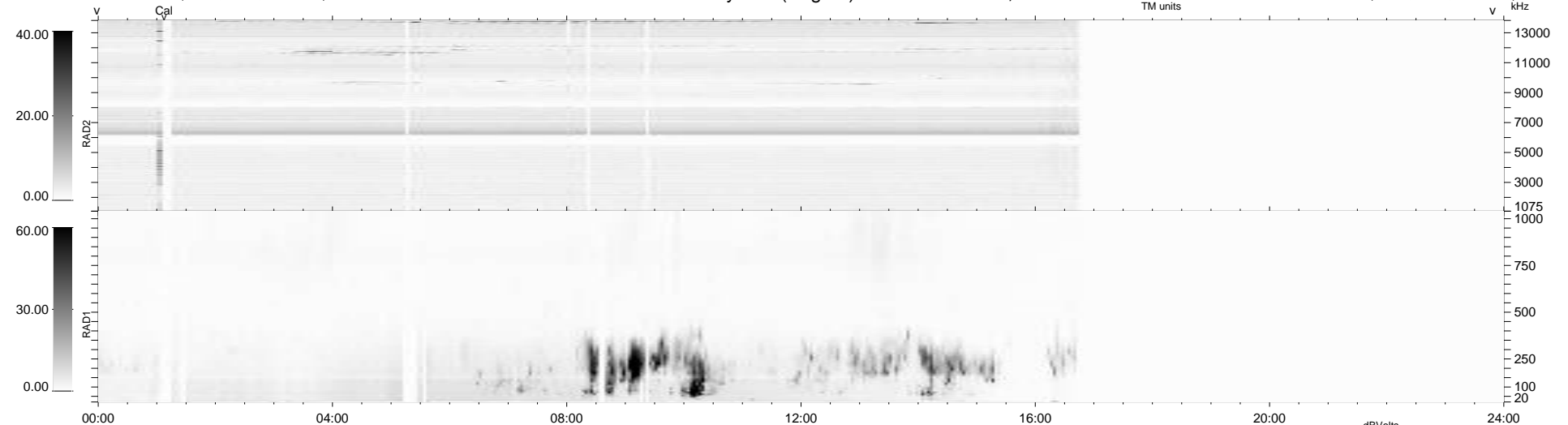
35 bad + 620 good MF/939MF projected (66%) - 284 missing MFs
 Avg interval = 180 secs
 Re = -261.56 (260.58, -15.11, 16.75 GSE)

windlib 2.0b

LZ version = v01

WIND/WAVES Summary Plot (Page 1) for 05-OCT-2015, DOY = 278

DAILY 2015-10-07 05:52:05
 Re = 261.61 (260.41, -18.50, 16.85 GSE)



```

RAD2
Antenna Ey .....
Mode LIN(1) .....
SUM/SEP SEP .....
Toggle OFF .....

RAD1
Antenna Ex .....
Mode LIS(2,4) .....
SUM/SEP SUM .....
Toggle OFF .....

TNR
Antenna ExEy .....
Mode A-32 .....
Sweep ACE .....
  
```