

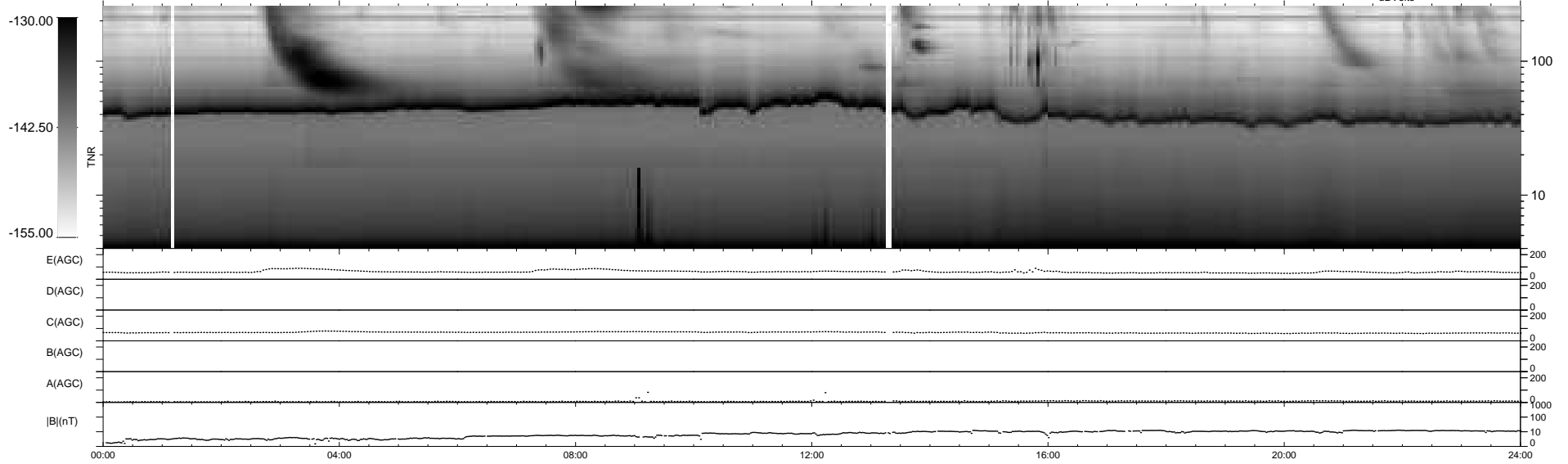
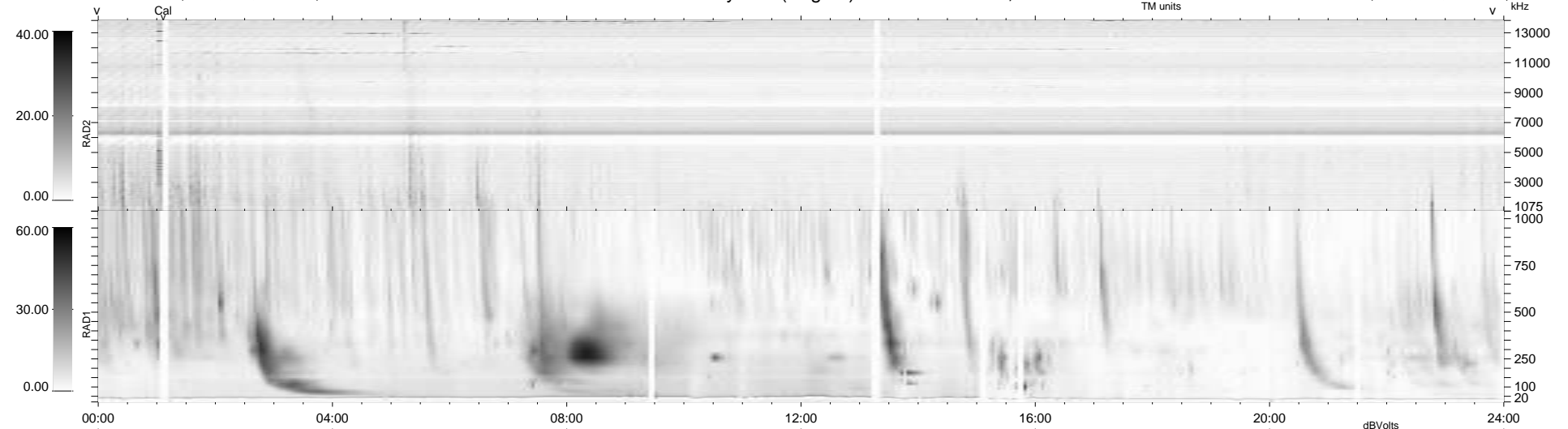
28 bad + 911 good MF/939MF projected (97%) - 0 missing MFs  
 Avg interval = 180 secs  
 Re = 261.30 (260.79, -1.02, 16.26 GSE)

windlib 2.0b

LZ version = v01

WIND/WAVES Summary Plot (Page 1) for 01-OCT-2015, DOY = 274

DAILY 2015-10-03 02:52:05  
 Re = 261.35 (260.80, -4.57, 16.40 GSE)



RAD2  
 Antenna Ey  
 Mode LIN(1)  
 SUM/SEP SEP  
 Toggle OFF

RAD1  
 Antenna Ex  
 Mode LIS(2,4)  
 SUM/SEP SUM  
 Toggle OFF

TNR  
 Antenna ExEy  
 Mode A-32  
 Sweep ACE