

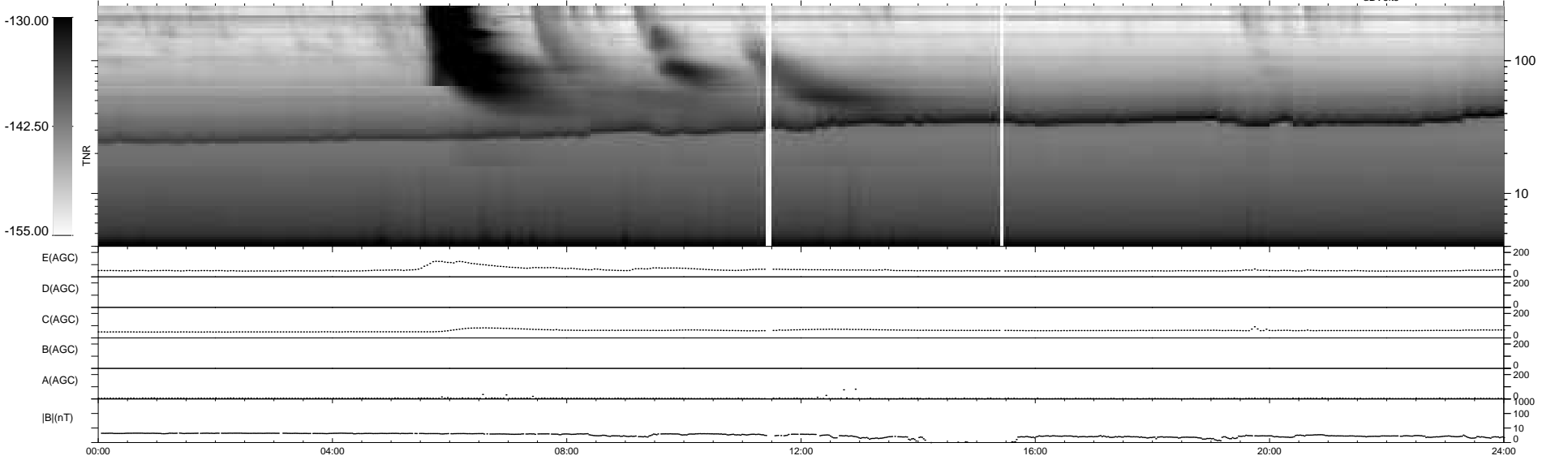
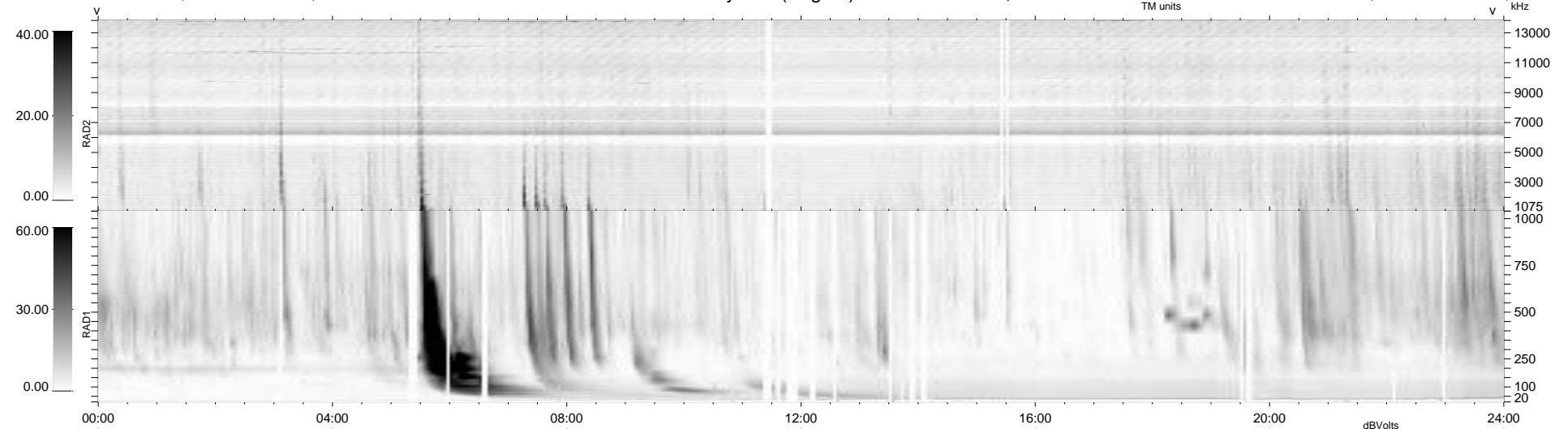
50 bad + 889 good MF/939MF projected (94%) - 0 missing MFs
 Avg interval = 180 secs
 Re = 261.27 (260.76, 2.59, 16.11 GSE)

windlib 2.0b

LZ version = v02

WIND/WAVES Summary Plot (Page 1) for 30-SEP-2015, DOY = 273

DAILY 2015-10-05 11:52:04
 Re = 261.30 (260.79, -0.99, 16.26 GSE)



RAD2
 Antenna Ey
 Mode LIN(1)
 SUM/SEP SEP
 Toggle OFF
 RAD1
 Antenna Ex
 Mode LIS(2,4)
 SUM/SEP SUM
 Toggle OFF
 TNR
 Antenna ExEy
 Mode A-32
 Sweep ACE