

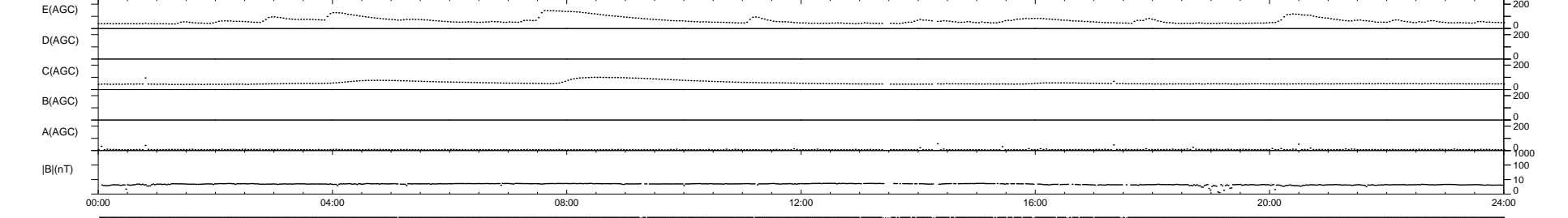
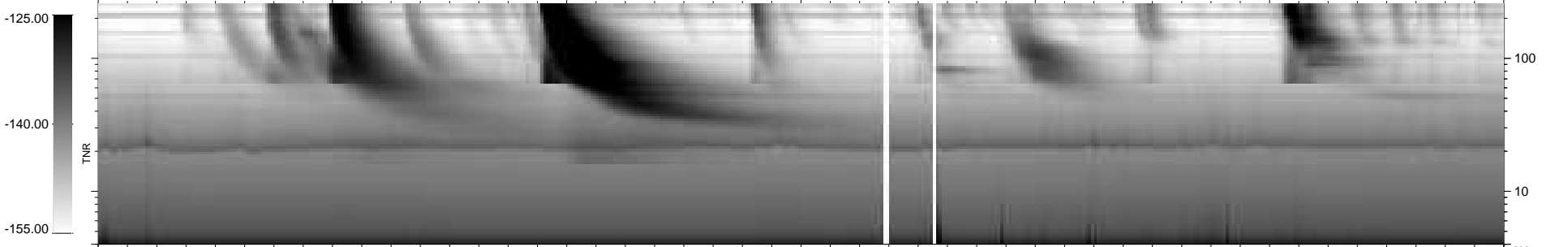
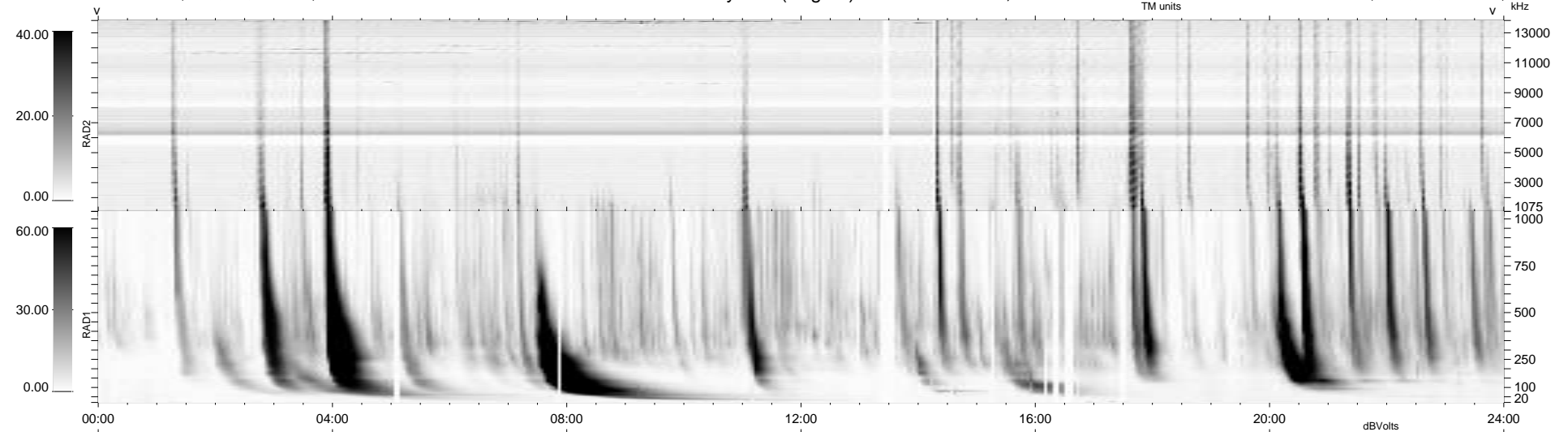
38 bad + 901 good MF/939MF projected (95%) - 0 missing MFs  
 Avg interval = 180 secs  
 Re = 261.30 (260.64, 9.82, 15.76 GSE)

windlib 2.0b

LZ version = v01

### WIND/WAVES Summary Plot (Page 1) for 28-SEP-2015, DOY = 271

DAILY 2015-09-30 11:52:04  
 Re = 261.27 (260.71, 6.23, 15.94 GSE)



RAD2  
 Antenna Ey  
 Mode LIN(1)  
 SUM/SEP SEP  
 Toggle OFF

RAD1  
 Antenna Ex  
 Mode LIS(2,4)  
 SUM/SEP SUM  
 Toggle OFF

TNR  
 Antenna ExEy  
 Mode A-32  
 Sweep ACE