

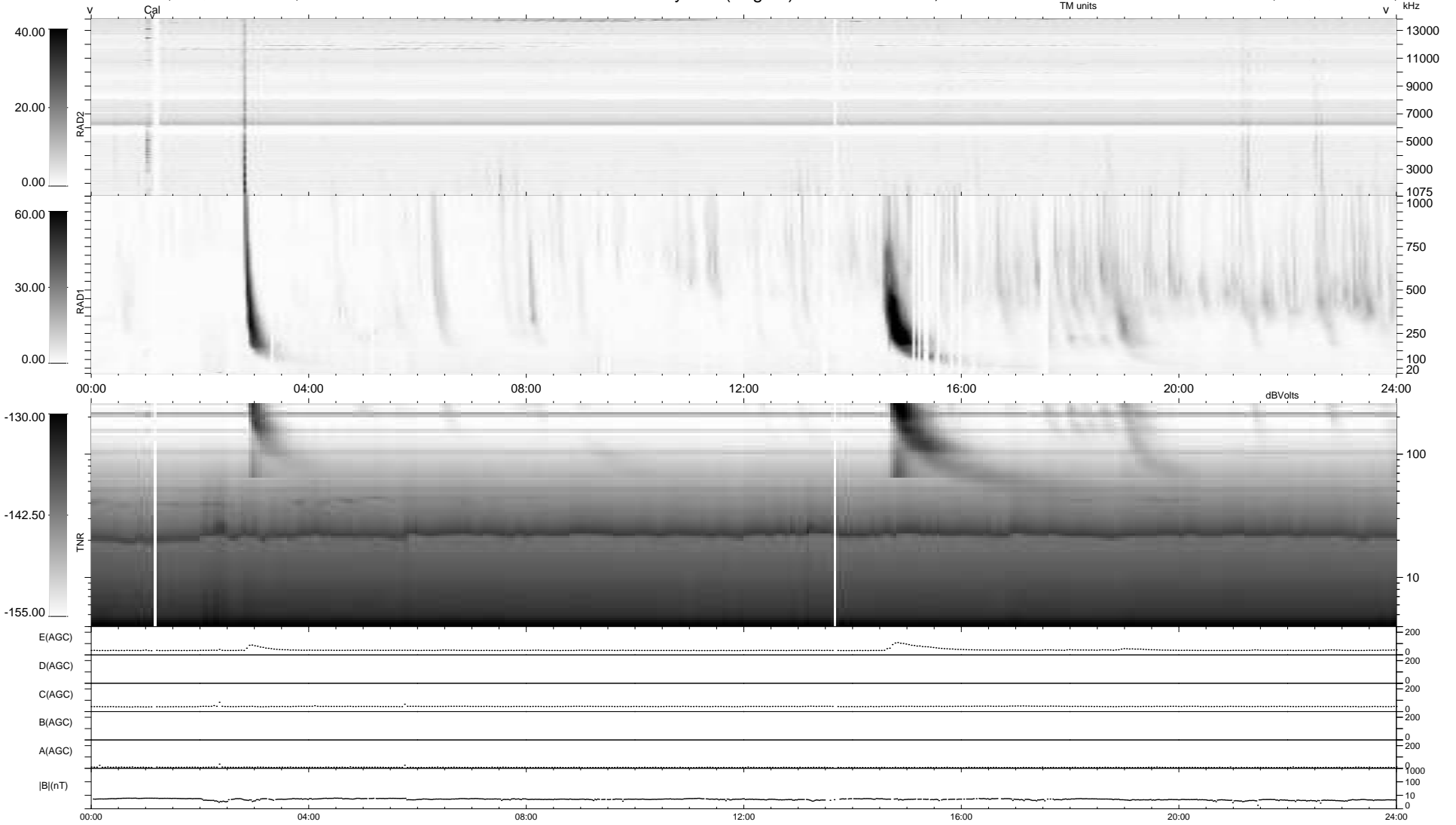
37 bad + 903 good MF/940MF projected (96%) - 0 missing MFs  
 Avg interval = 180 secs  
 Re = 261.36 (260.56, 13.43, 15.56 GSE)

windlib 2.0b

LZ version = v01

### WIND/WAVES Summary Plot (Page 1) for 27-SEP-2015, DOY = 270

DAILY 2015-09-29 01:52:06  
 Re = 261.30 (260.64, 9.85, 15.75 GSE)



```

RAD2
Antenna Ey .....
Mode LIN(1) .....
SUM/SEP SEP .....
Toggle OFF .....

RAD1
Antenna Ex .....
Mode LIS(2,4) .....
SUM/SEP SUM .....
Toggle OFF .....

TNR
Antenna ExEy .....
Mode A-32 .....
Sweep ACE .....
  
```