

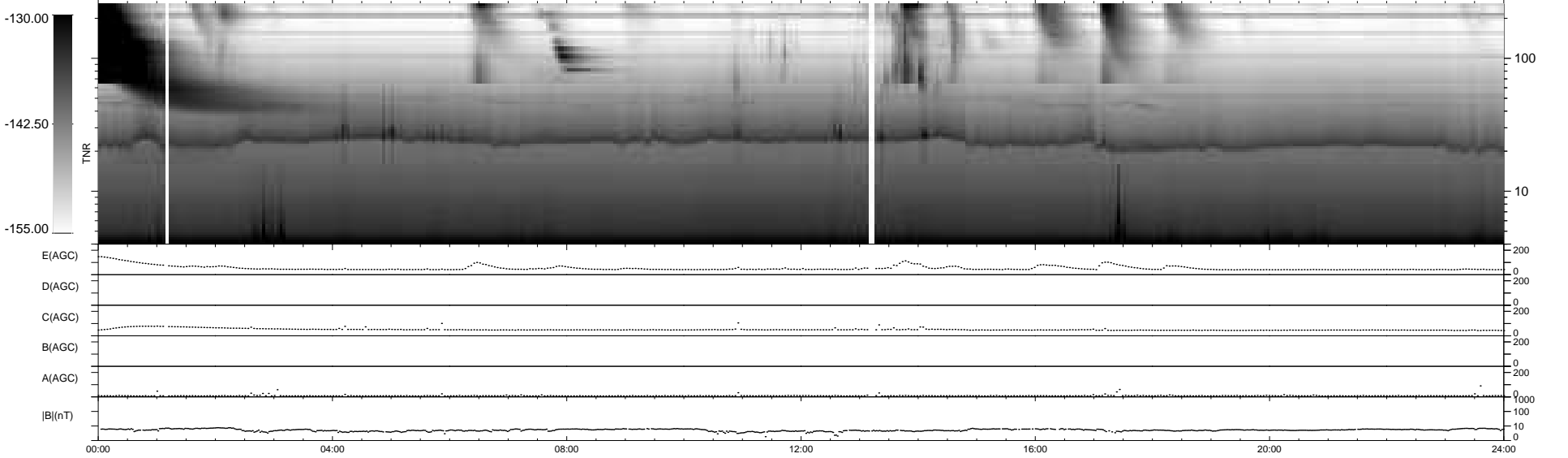
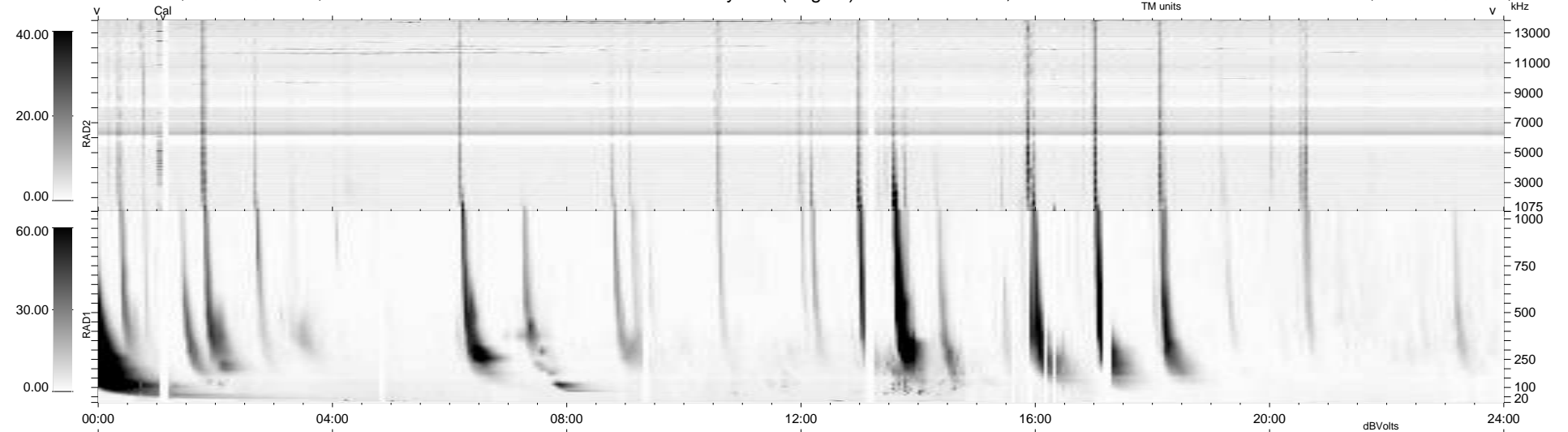
33 bad + 906 good MF/939MF projected (96%) - 0 missing MFs  
 Avg interval = 180 secs  
 Re = 261.58 (260.33, 20.55, 15.12 GSE)

windlib 2.0b

LZ version = v01

### WIND/WAVES Summary Plot (Page 1) for 25-SEP-2015, DOY = 268

DAILY 2015-09-26 11:52:04  
 Re = 261.46 (260.45, 17.04, 15.35 GSE)



RAD2  
 Antenna Ey  
 Mode LIN(1)  
 SUM/SEP SEP  
 Toggle OFF

RAD1  
 Antenna Ex  
 Mode LIS(2,4)  
 SUM/SEP SUM  
 Toggle OFF

TNR  
 Antenna ExEy  
 Mode A-32  
 Sweep ACE